



**The National Statistical Committee
of the Kyrgyz Republic**

**FOOD SECURITY AND POVERTY
INFORMATION BULLETIN OF THE
KYRGYZ REPUBLIC**

2 / 2013

Bishkek city 2013

**The National Statistical Committee
of the Kyrgyz Republic**

**FOOD SECURITY AND POVERTY
INFORMATION BULLETIN OF THE
KYRGYZ REPUBLIC**

2 / 2013

Bishkek city 2013

Editorial Board:

- Chairman - A. Osmonaliev
- Members:
- D. Baijumanov
 - B. Kasymbekov
 - L. Tekeeva
 - K. Isaliev
 - K. Koichumanova
 - R. Plesovskih
 - Ch. Turdubaeva

Food security and poverty information bulletin of the Kyrgyz Republic - B.:
Natstatcom of the Kyrgyz Republic, 2013:- 63

Food security and poverty information bulletin of the Kyrgyz Republic contains the analysis of the situation on food provision in the country for the 1st half of 2013. The bulletin combines and systematizes materials on food availability, its production, indicators of access to food, data on its consumption per capita.

Annexes of the bulletin contain review of hydro-meteorological conditions on the territory of the Kyrgyz Republic in the 2nd quarter of 2013, information on average retail prices for food for the 1st half of 2013, estimates on food balance for the 1st half of 2013 by basic foodstuff, nutrition balance in kind of energy value by results of integrated survey of 5016 households for 2011-2012, as well as social protection and food security indicators.

While using statistical data in mass media and scientific papers, disseminating these data through information nets, hard copies, CD discs and other, users have to refer to their source (article 17 of the Law on State Statistics).

Conventional signs:

- Event is not existing;
- ... Data are not available;
- 0,0 Negligible and insignificant value.

In separate cases insignificant discrepancies between total and sum of components are explained by rounding.

Internet: www.stat.kg
e-mail: nsc_mail@stat.kg
© Natstatcom KR, 2013

Contents

Overview	4
Introduction	5
Section I. Socio-Economic Indicators	6
1.1. Gross Domestic Product	6
1.2. Prices and Tariff Indices	7
1.3. Labour Market	8
Section II. Availability of Food	10
2. Agriculture	10
2.1. Crop production	10
2.2. Livestock Production	12
2.3. Producer Price Index of Agricultural Production	13
2.4. Trade of Basic Foodstuffs	14
2.5. Availability of Food Per Capita	14
Section III. Access to Food	16
3.1. Consumer Prices Analysis	16
3.2. Money Income of Population	18
Section IV. Additional materials	22
Poverty level in the Kyrgyz Republic in 2012	22
Methodological explanations	26
List of Abbreviations	27
Annex:	
1. Review of Hydro-meteorological Conditions on the territory of the Kyrgyz Republic in the 2 nd quarter of 2013	28
2. Average Consumer Prices for Food (by regions, 2 nd quarter of 2012-2013)	29
3. Food Balance	32
4. Food Balance expressed in nutritional value and compared to calculated daily needs based on surveys of daily intake and calculated daily needs based on recurrent nutritional surveillance by Socio-Demographic Groups of Population and Regions (2011-2012)	34
5. Food Balance expressed in nutritional value and compared to calculated daily needs based on surveys of daily intake and calculated daily needs based on recurrent nutritional surveillance by Quintile Groups and Regions (2011-2012)	42
6. Household Food Balance expressed in value terms based on results of surveys of living standard by Income Quintile Groups and Regions (2011-2012)	47
7. Household Food Balance expressed in value terms based on results of surveys of living standard by Expenditure Quintile Groups and Regions (2011-2012)	53
8. The share of population without access to drinking water	59
9. The share of children suffering from underweight	60
10. Social Protection Indicators	61
11. Food Security Indicators of the Kyrgyz Republic	62

OVERVIEW

Gross domestic product (GDP) calculated by production method, in January-June 2013, according to preliminary estimation, has been valued at 133,9 billion KG Soms and has increased by 7,9% in comparison with January-June 2012.

Page 6

In June 2013, consumer price index characterizing inflation rate has made up 100,1% in comparison with May 2013.

Page 7

In January-June 2013, gross output of agriculture, hunting and forestry products was valued at 46247,0 million KG Soms and the physical volume index has made up 101,9%.

Page 10

Production of livestock and poultry for slaughter (in live weight) has increased by 1,4% in comparison with January-June of the previous year, milk - by 2,0%, eggs - by 4,5% and wool - by 2,5% due to increase of livestock and poultry heads.

Page 11

In January-June 2013, producer prices for agricultural products sold have increased by 9,1% in comparison with the corresponding period of the previous year.

Page 13

Introduction

Pursuant the Rome Declaration, adopted on November 17, 1996 during the World Food Summit, the Kyrgyz Republic as a member of the international community assumed responsibility to "...conduct a policy aimed to the alleviation of poverty and inequality, provision of physical and economical access to all people and at all times to sufficiently dietary adequate food and as well as to its use".

In 1999, the Government of the Kyrgyz Republic, in cooperation with the European Commission in the Kyrgyz Republic has developed and adopted a National Food Security Policy. The policy (and EC funding under the EC-Food Security Programme) sustains reforms in food security related to such sectors as agriculture and social protection.

Food security is a physical availability of a foodstuff in the required quantity, possibility of access to indicated foodstuff (the products made in households, and acquired through the market, gifts and other sources) and consumption of foodstuff in that quantity which are necessary for maintenance of food needs.

Food and nutrition security presumes the availability of adequate food (in the context of quantity, quality, safety and social and cultural acceptability), provision of access and adequate consumption and digestion of such products by all persons at any time for an active and healthy life.

Food Availability: physical existence of quantitatively and qualitatively adequate and safety food items at any moment of time.

Access: all households and household members have sufficient resources to obtain appropriate food (through production, purchase or donation).

Stability: continuous provision of availability, access and use of food. If there is no stability, individuals will suffer from chronic or transitory food insecurity

The aim of the KR Food Security and Poverty Information Bulletin is to provide up-to-date and reliable information and analysis of the current food security situation in the country.

The publication of information bulletin on food security was prepared by the National Statistical Committee of the Kyrgyz Republic. The publication contains information provided by State Agency on Hydro Meteorology of the Ministry of Emergency of the Kyrgyz Republic. The bulletin was financed by the European Commission in the Kyrgyz Republic and technical support was provided by UN FAO.

Section I. Socio-Economic Indicators

The below socio-economic indicators characterizes the general situation of economy in the country for the analysis of food security situation.

1.1. Gross Domestic Product

Gross domestic product (GDP) calculated by *production method*, in January-June 2013, according to preliminary estimation, has been valued at 133,9 billion KG Soms and has increased by 7,9% in comparison with January-June 2012%; real growth rate of GDP excluding «Kumtor» mining company made up 124,1 billion KG Soms and increased by 5,6%. The volume of GDP calculated per capita made up 24,7 thsd. soms and in comparison with the corresponding period of the previous year has increased by 5,8%.

Table 1: Main socio-economic indicators

	2012	January-June	
		2012	2013 ¹
Average annual number of present population, mln. people	5,35	5,32	5,43
Nominal GDP, mln.soms	304350,1	118611,8	133878,2
in % to GDP:			
agriculture	17,5	12,4	11,1
industry and construction	22,5	21,3	21,8
services	46,6	51,9	51,7
GDP per capita, thsd. soms	56,9	22,3	24,7
GDP growth rate, %	99,1	93,1	107,9
CPI ²	102,8	100,9	107,8
CPI for foodstuff and nonalcoholic beverages (soft drinks) ²	95,9	92,9	106,6
CPI for services ²	110,2	110,6	108,8
Number of employed population thsd. people ⁶	2286,4	-	-
Average monthly wage and salary, soms ³	10726	10473	10977
Import, mln. US dollars ⁴	5576,3	2338,1	2642,7
Export, mln. US dollars ⁴	1927,6	695,4	655,5
Exchange rate of KG som to ⁵ :			
US dollars	47,00	46,87	48,01
Euro	60,44	60,82	63,08
RUR	1,51	1,53	1,55
KZT	0,32	0,32	0,32
Subsistence level, soms	4341,15	4298,95	4698,09

¹ Data are preliminary.

² In % to the corresponding period of the previous year.

³ Excluding small enterprises.

⁴ Including volumes of external trade implemented by individuals.

⁵ According to data of the National Bank of the Kyrgyz Republic.

⁶ Annual data.

1.2. Prices and Tariff Indices

In June 2013, *Consumer Price Index (CPI)* characterizing inflation rate, in comparison with May 2013 has made up 100,1%. In June 2013, consumer prices for *foodstuff and nonalcoholic beverages (soft drinks)* have decreased, in general, by 0,3% in comparison with the previous month, of which prices for fresh vegetables have decreased by 7,2%, dairy products – by 2,9%, flour and granulated sugar – by 0,8%.

At the same time, in June 2013, prices for fresh fruits (by 4,3%), sausages and similar products (by 1,1%), fresh meat (by 0,7%), nonalcoholic beverages (0,6%) have increased.

Table 2: Price index for main types of food products

(as a % to the previous month)

	Wheat flour		Bread	Ashcake	Beef	Mutton	Milk (poured)	Eggs	Granulated sugar	Sunflower oil
	High quality	First grade								
January	100,2	99,8	100,0	100,0	99,6	99,9	99,7	104,8	99,2	100,1
February	100,1	100,5	100,0	100,0	99,8	100,3	98,4	99,1	99,6	99,6
March	100,0	100,0	99,9	100,0	99,9	101,2	99,6	95,4	98,8	99,7
I st quarter ¹	100,3	100,3	99,9	100,0	99,3	101,4	97,7	99,0	97,6	99,4
April	99,5	98,8	99,6	99,6	100,6	101,3	95,7	96,7	100,3	98,4
May	99,9	98,7	99,0	99,5	101,1	102,5	91,7	99,7	104,1	99,8
June	99,6	98,9	99,6	99,9	100,7	100,9	96,7	98,1	99,2	99,7
II nd quarter ¹	99,0	96,5	98,2	99,0	102,5	104,8	84,8	94,6	103,6	97,8

¹ Cumulative total for three months of the quarter.

In June 2013, prices for fruits and vegetables, in general, have decreased by 0,3%, at the same time prices for fruits have increased by 3,9%, prices for vegetables, against, have decreased by 2,0% in comparison with the previous month.

Table 3: Price index for selected variety of fruits and vegetables

(as a % to the previous month)

	Carrot	Onion	Cabbage	Beet	Cucumber	Tomato	Apples	Potatoes
January	106,0	111,1	103,5	116,3	144,7	134,1	105,1	102,1
February	98,9	100,1	98,1	103,8	108,6	108,2	101,4	95,4
March	93,1	95,5	91,8	100,6	113,3	90,1	108,7	93,7
I st quarter ¹	97,6	106,2	93,2	121,5	in 1,8 t.	130,6	115,8	91,3
April	100,6	98,5	92,1	99,3	78,3	102,7	113,0	101,9
May	112,0	116,3	62,2	107,6	41,2	75,4	117,2	124,8
June	104,0	101,1	69,3	99,8	53,2	67,4	99,1	110,3
II nd quarter ¹	117,2	115,8	39,7	106,7	17,2	52,2	131,3	140,1

¹ Cumulative total for three months of the quarter.

In the 1st half of 2013, prices for foodstuff and nonalcoholic beverages have increased by 0,6%. Prices for fresh fruits have increased by 13,8%, coffee and tea – by 8%, sausages and canned meat products – by 2,8%, rice – by 2,7% and fresh meat – by 2,5%. In June 2013, despite the decrease of prices for granulated sugar by 0,8% in comparison with the previous month, since the beginning of 2013 prices for sugar increased by 1,1%.

At the same time, since the beginning of 2013, it has been fixed the decrease of prices for milk and dairy products (by 9,8%), eggs (by 6,3%), bread (by 1,7%), flour (by 2,2%), cereals (by 1,6%).

In the 1st half of 2013, prices for alcoholic beverages and tobacco have increased by 4,5%, and price for alcoholic beverages was higher by 4,8%. In June 2013, price only for alcoholic beverages was increased by 1,6% in comparison with the previous month. Prices for tobacco remained at the level of the previous month.

Table 4: Price index for selected groups of food products

(as a %)

	June 2013			January-June 2013 to January-June 2012
	to May 2013	to December 2012	to June 2012	
Bakery products and grains	99,4	98,8	114,6	113,5
Meat	100,5	102,1	102,1	99,1
Fish	99,4	99,8	112,6	115,0
Milk products, cheese and eggs	97,6	92,0	108,7	106,7
Oils and fats	100,0	99,1	101,5	100,3
Fruits and vegetables	99,7	105,4	118,5	114,0
Sugar, jam, honey, chocolate and sweets	99,6	101,3	96,5	97,3
Other food products	100,0	101,2	104,8	104,7
Nonalcoholic beverages (soft drinks)	100,6	107,3	109,5	108,5
Alcoholic beverages	101,6	104,8	114,3	113,2
Tobacco	100,0	103,0	104,6	106,4

In June 2013, in comparison with the previous month, average consumer prices for mutton and beef have increased.

Table 5: Average prices for selected representative goods

(som per kilo, litre)

	Wheat flour		Bread	Ashcake	Mutton	Beef	Potatoes	Petrol A-80	Diesel fuel
	High quality	First grade							
January	37,10	30,83	42,82	51,86	283,65	291,22	24,33	32,48	40,14
February	37,15	30,98	42,80	51,86	284,64	290,65	23,33	32,24	40,04
March	37,17	30,92	42,77	52,20	287,96	290,25	21,88	32,10	40,02
April	36,97	30,55	42,60	52,30	291,72	292,07	22,15	31,54	40,10
May	36,91	30,17	42,16	52,03	298,73	295,38	27,09	30,47	40,42
June	36,76	29,84	41,98	51,95	301,49	297,55	32,58 ¹	30,15	40,29

¹ Including potatoes from the new crop.

According to preliminary data, import of foodstuff in the 1st half of 2013 has made up 11,1% of total volume of import.

Table 6: Import and export of foodstuff¹

	1st half of 2012		1st half of 2013	
	mln. dollars	as a percent to total volume	mln. dollars	as a percent to total volume
Import	259,5	11,1	294,0	11,1
Export	94,3	13,6	73,1	11,2

¹ Including volumes of external trade implemented by individuals.

1.3. Labour Market

As of July 1, 2013, according to the data of the Ministry of Labor, Migration and Youth of the Kyrgyz Republic, the number of unemployed population registered in state employment services who search for work has made up 96,2 thsd. people and in comparison with the same date of 2012, has decreased by 5,5%. The number of registered unemployed has made up 59,9 thsd. people and decreased by 6,7%.

Table 7: The number of unemployed population registered in state employment services, as of July 1, 2013

	Total thsd. people	As a percent to the corresponding date of	
		the previous year	the previous month
Kyrgyz Republic	59923	93,3	99,2
Batken oblast	5294	89,2	93,9
Djalal-Abad oblast	12847	100,2	99,6
Issyk-Kul oblast	4267	88,6	101,8
Naryn oblast	6557	98,0	99,6
Osh oblast	12130	86,8	100,4
Talas oblast	2359	97,4	103,0
Chui oblast	6086	96,0	99,7
Bishkek city	7985	91,2	97,2
Osh city	2398	97,0	100,1

From total number of registered unemployed people, 52% were women. The registered unemployment rate has made up 2,4% of the economically active population.

Section II. Availability of Food

Availability of food – is a physical availability of safety and sufficient, quantitative and qualitative food at any time.

2. Agriculture

Agriculture, hunting and forestry. In January-June 2013, gross output of agriculture, hunting and forestry products was valued at 46247,0 million KG Soms and the physical volume index has made up 101,9%.

Table 8: Output of agricultural products

	As a percent to	
	the corresponding period of the previous year	the previous month
January	101,5	-
February	101,2	104,4
March	101,4	-
January-March	101,6	105,6
April	101,5	-
May	101,6	107,1
June	101,5	-
January-June	101,6	144,4

From total production, in January-June 2013, the share of livestock production has made up 82,3%, crop production - 15,3%, forestry - 0,2%, services - 2,1%. The share of peasant farms and private subsidiary plots of citizens in total production volume has made up 95,7.

In January-June 2013, gross output of agriculture has increased in all regions of the country, except Batken oblast, and it was mainly due to increase of livestock industry production and the start of potatoes, vegetables and grain crops harvesting.

Table 9: Gross output of agriculture, hunting and forestry products on the territory in January-June 2013

	Mln. Soms (in current prices)	As a percent to	
		the previous year	total
Kyrgyz Republic	46127,0	101,9	100
Batken oblast	4346,0	99,3	9,4
Djalal-Abad oblast	8427,2	104,0	18,2
Issyk-Kul oblast	5388,6	102,3	11,7
Naryn oblast	4615,7	100,3	10,0
Osh oblast	9259,0	102,9	20,0
Talas oblast	3170,8	100,5	6,9
Chui oblast	10611,5	101,7	22,9
Bishkek city	249,9	100,6	0,5
Osh city	178,3	100,7	0,4

2.1. Crop production

In the country, sowing of agricultural crops for harvesting in 2013 was finished. Total sown area used for agricultural crops has made up 1170,4 thsd. hectares, that is higher by 4,7 thsd. hectares or by 0,4% than in 2012.

Table 10: Sown area of agricultural crops for harvesting in 2013

	thsd. hectares		As a % to 2012
	Sowed for harvesting in 2013	increase (+), decrease (-) of areas to 2012	
Sown areas - total	1170,4	4,7	100,4
including by sowing period:			
winter	218,1	26,7	114,0
spring	681,2	-29,6	95,8
perennial grasses of previous years planting	271,1	7,5	102,9
from total sown area by variety of crops:			
Grains (without grains and leguminous, rice and buckwheat)	588,0	19,3	103,4
Grains and leguminous	49,8	0,6	101,2
Oil plants	50,2	-4,2	92,2
Cotton	23,4	-7,5	75,7
Tobacco	3,1	-0,3	90,0
Sugar beet	6,7	1,1	119,5
Potatoes	80,5	-1,1	98,7
Vegetables	44,2	-1,2	97,3
Other crops	17,9	1,4	108,5
Fodder/feed crops	306,6	-3,4	98,9

In the country, in comparison with the previous year, autumn sowing areas of agricultural crops have increased by 14%, winter sowing areas, against, have decreased by 4,2%.

The unused arable land area decreased by 3,1 thsd. hectares in comparison with the previous year and made up 100,4 thsd. hectares.

Table 11: Unused arable land area by causes in 2013

	Thsd. hectares
Unused - total	100,4
including by causes:	
salting and swampy	5,4
lack of seed grain	1,2
absence of irrigation, defects in irrigation system	14,1
economical inefficiency (hard dryland)	50,8
remoteness and stony	17,2
lack of fuel and oil, and equipment (machinery)	1,3
lack of funds	3,1
natural disasters (earthfall, mudflow)	0,6
using for construction	0,2
allotment of land for cemetery	0,1
reclamation, capital planning	0,1
allotment of land for industry	1,2
extension of inhabited localities	3,7
land squatting (self-occupation of lands)	0,9
reluctance to cultivate the land	0,1
empty houses	0,4

The main reasons of non-use of arable land were hard dryland (50,8 thsd. hectares), remoteness and

stony (17,2 thsd. hectares), absence of irrigation, defects in irrigation system (14,1 thsd.), salting and swampy (5,4 thsd.), lack of fuel and oil, seeds and equipment/machinery (2,5 thsd.), as well as lack of funds (3,2 thsd. hectares).

In the country, the harvest of agricultural crops has started and the harvesting rate increased significantly in comparison with the previous year.

Table 12: Harvest of agricultural crops as of June 21, 2013

	Actual		To the corresponding date of the previous year	
	2012	2013	+, -	as a %
Grains harvested (without grain -leguminous, rice and buckwheat) thsd. hectares	1,7	3,4	1,7	in 2 t.
Grains threshed - total (in primary received weight) (without grain -leguminous, rice and buckwheat) thsd. tones	4,9	10,6	5,7	in 2 t.
from 1 hectare, centner	28,5	31,3	2,8	109,8
wheat threshed (in primary received weight), thsd. tones	3,9	9,8	5,9	in 2,5 t.
Potatoes dug out, thsd. hectares	1,2	1,7	0,5	136,6
Potatoes dug out, thsd. tones	18,8	26,2	7,3	138,9
from 1 hectare, centner	151,7	154,2	2,5	101,6
Vegetables collected, thsd. tones	30,9	34,4	3,5	111,2
Melons collected, thsd. tones	15,9	20,6	4,7	129,3
Fruits and berries collected, thsd. tones	5,0	6,2	1,1	122,4

According to data of the Ministry of Agriculture and Reclamation of the Kyrgyz Republic, as of the beginning of July 2013, 26% of diesel fuel was supplied for harvest works, totally by country, petrol - 23,9%.

According to data of the Department of Mechanization and Energy Supply of Agriculture under the Ministry of Agriculture and Reclamation of the Kyrgyz Republic, 29% of harvester-thresher (grain combine) and 16% of tractors were not repaired to the beginning of agricultural crops harvesting.

2.2. Livestock Production

In January-June 2013, production of main livestock products has increased in comparison with the corresponding period of the previous year.

Table 13: Production of main livestock products in farms of all categories in January-June

	Produced-total, tones				As a % to the corresponding period of the previous year			
	2012		2013		2012		2013	
	June	January-June	June	January-June	June	January-June	June	January-June
Livestock and poultry for slaughter (in live weight)	27212	160362	27662	162540	101,9	101,2	101,7	101,4
Raw milk	160965	636190	164481	648823	102,1	101,4	102,2	102,0
Eggs, mln. pieces	46299	210249	46326	219628	100,3	104,2	100,1	104,5
Wool (in physical weight)	5921	11090	5961	11371	106,6	102,1	100,7	102,5

Production of livestock and poultry for slaughter (in live weight), in comparison with January-June of the previous year, has increased by 1,4%, milk – by 2,0%, eggs – by 4,5%, wool – by 2,5% due to increase of livestock and poultry heads.

Table 14: Production of main livestock products by territory in January-June 2013

	Livestock and poultry for slaughter (in live weight)	Raw milk	Eggs thsd. pieces	Wool (in physical weight)
	<i>Tones</i>			
Kyrgyz Republic	162540	648823	219628	11371
Batken oblast	10897	42286	8201	657
Djalal-Abad oblast	24232	121885	28703	1861
Issyk-Kul oblast	20976	94461	35135	1912
Naryn oblast	22078	45969	2763	1832
Osh oblast	32218	141445	25333	2216
Talas oblast	11612	34289	11178	1386
Chui oblast	39791	164690	107038	1473
Bishkek city	141	441	527	6
Osh city	595	3357	750	28
	<i>As a % to the corresponding period of the previous year</i>			
Kyrgyz Republic	101,4	102,0	104,5	102,5
Batken oblast	100,3	100,9	101,4	100,0
Djalal-Abad oblast	102,0	102,8	106,4	105,6
Issyk-Kul oblast	102,4	103,1	102,5	103,7
Naryn oblast	100,6	100,4	100,7	101,3
Osh oblast	101,1	101,8	104,7	101,0
Talas oblast	100,5	100,6	101,5	101,5
Chui oblast	101,7	101,8	105,4	103,5
Bishkek city	96,6	in 1,8 t.	75,2	75,0
Osh city	100,8	100,5	102,2	103,7

Production of livestock and poultry for slaughter (in live weight) was higher in farms of Issyk-Kul, Djalal-Abad, Chui and Osh oblasts, milk – in farms of Issyk-Kul, Djalal-Abad, Osh and Chui oblasts.

The average milk yield per cow, totally by country, has made up 942 kg.. Milk yield in farms of Chui oblast (1349 kg), Talas oblast (1032 kg) and Issyk-Kul oblast (1018 kg) is higher than the average republican level.

Eggs production increased in farms of Djalal-Abad, Chui and Osh oblasts.

2.3. Producer Price Index of Agricultural Production

In January-June 2013, producer prices for sold *agricultural products* have increased by 9,1% in comparison with the corresponding period of the previous year.

Table 15: Producer price index of agricultural production
(as a %)

	Total		including for production			
	to the previous period	to December of the previous year	Crop production		Livestock	
			to the previous period	to December of the previous year	to the previous period	to December of the previous year
January	104,7	104,7	105,7	105,7	103,8	103,8
February	99,9	104,6	99,7	105,3	100,1	103,9
March	102,8	107,5	106,5	112,2	99,4	103,4
April	99,1	106,5	98,8	110,9	99,3	102,7
May	100,5	107,0	103,9	115,3	97,1	99,8
June	99,7	106,7	101,7	117,3	97,6	97,3

In comparison with January-June 2013, prices for potatoes were higher in 2 times, wheat – in 1,4 times; price for meat (in live weight), against, dropped by 7,1%.

Table 16: Producer price index of selected types of agricultural production in January-June 2013 (as a %)

	Grain total	Wheat	Vegetables	Potatoes	Meat (in live weight)	Raw milk	Eggs
<i>To the previous month</i>							
January	107,1	103,5	110,3	100,7	101,4	109,6	106,7
February	101,7	104,3	93,6	102,7	100,8	99,4	89,8
March	109,2	109,1	108,1	102,8	98,0	101,7	111,3
April	99,8	98,8	103,7	93,4	102,5	91,7	106,0
May	96,2	89,4	102,6	130,7	98,9	93,5	90,9
June	98,0	95,1	107,4	104,6	96,2	100,6	101,1
<i>To the corresponding period of the previous year</i>							
January	131,2	in 1,5 t.	109,8	in 1,5 t.	96,0	111,2	122,9
February	131,2	in 1,5 t.	112,1	in 2,1 t.	95,7	107,2	112,1
January-February	131,2	in 1,5 t.	110,9	in 1,7 t.	95,9	109,2	117,6
March	138,5	in 1,6 t.	118,9	in 1,8 t.	92,2	113,2	116,2
January-March	133,7	in 1,5 t.	113,5	in 1,8 t.	94,6	110,5	117,1
April	126,9	in 1,5 t.	129,1	in 1,8 t.	91,1	109,5	116,4
January-April	131,9	in 1,5 t.	117,2	in 1,8 t.	93,7	110,3	116,9
May	121,5	134,2	128,6	in 2,5 t.	91,8	104,0	109,3
January-May	129,7	in 1,5 t.	119,5	in 1,9 t.	93,3	109,1	115,3
June	123,5	129,9	121,2	in 2,2 t.	90,5	108,6	121,0
January-June	128,6	in 1,4 t.	119,8	in 2 t.	92,9	116,2	121,0

2.4. Trade of Basic Foodstuffs

The share of foodstuff import in total import value in the 1st half of 2012 has made up 11,1%, export – 12,6%.

Table 17: Import and export of basic foodstuffs (thsd. tons)

	January-June	
	2012	2013
Import		
Bakery products expressed in grain	371,0	289,6
Sugar and confectioneries	44,5	45,8
Vegetable oil	20,4	20,1
The share of foodstuff in total import value, %	11,1	11,1
Export		
Milk and dairy products expressed in milk	32,2	2,4
Sugar and confectioneries	0,3	0,1
The share of foodstuff in total export value, %	13,6	11,2

2.5. Availability of Food Per Capita

The analysis of food balance shows that the availability of foodstuffs per capita on average per month remains stable (see Table 19 and Annex 3).

Table 18: Level of consumption of basic foodstuffs
(per capita, kg per month)

	January-June	
	2012	2013*
Bakery products (expressed in grain)	15,9	15,9
of which wheat and wheat processed products (expressed in grain)	14,3	14,2
Potatoes	8,2	8,2
Vegetables and melons	4,5	4,5
Fruits and berries	0,3	0,3
Sugar and confectioneries	1,7	1,6
Meat and meat products	3,3	3,3
Milk and dairy products	16,6	16,5
Eggs, pieces	5,9	5,9
Vegetable fats	1,0	1,0

*Data are preliminary

More detailed information is provided in Annex (table 3 «Food balance»²).

² Food balances were compiled in accordance with «Methodology of calculation of basic foodstuff balance», approved by the Decree of the National Statistical Committee of the Kyrgyz Republic from September 15, 2010, №19.

Section III. Access to Food

Access: Foodstuff must be accessible both in terms of their physical availability and in terms of purchasing power.

3.1. Consumer Price Analysis

Growth of consumer prices in the 1st half of 2013 has made up 1,5% against 0,9% in January–June 2012. The most intensive (by 0,8%) growth of consumer prices was in January 2013 (as in January–June 2012). In March and April 2013, against, prices decreased by 0,1% (in April 2012 – by 0,2% and in June 2012 – by 0,4%).

Table 19: Consumer price index in the 1st half of the year
(as a %)

	June to December of the previous year		Monthly average growth rate (decrease) in the 1 st half of the year	
	2012	2013	2012	2013
Goods and services - total	100,9	101,5	100,1	100,2
Goods	100,2	101,4	100,0	100,2
Food and non-alcoholic beverages	96,9	100,6	99,5	100,1
Alcoholic beverages and tobacco products	103,1	104,5	100,5	100,7
Non-food products	104,0	101,9	100,7	100,3
Services	104,9	101,9	100,8	100,3

Since the beginning of 2013, consumer prices and tariffs have increased throughout the country, except Batken oblast. The highest growth of prices was in Osh oblast (2,8%) due to, mainly, the maximum increase of prices for food and non-alcoholic beverages (by 2,3%) in comparison with other oblasts. Prices for non-food products increased in Chui oblast (by 9%). In the 1st half of 2013, tariffs for services provided for population increased in Naryn and Chui oblasts (by 3,9%).

At the same time, in June 2013, prices for food and non-alcoholic beverages in Batken oblast decreased by 1,2% in comparison with December 2012, non-food products – by 2,7%. Insignificant decrease of prices for food and non-alcoholic beverages (by 0,3%) was in Issyk-Kul oblast.

In the 1st half of 2013, prices for food and non-alcoholic beverages, totally by country, increased by 0,6%. In the 1st quarter of 2013, prices for food and non-alcoholic beverages increased by 1%, in the 2nd quarter of 2013, against, it decreased by 0,5%.

In January-June 2013, prices for bakery products and cereals have decreased totally by 1,2% despite the increase of these prices by 0,5% in the 1st quarter of 2013. Prices for flour (by 2,2%), bread (by 1,7%) and cereals (by 1,6%) have decreased. Since the beginning of 2013, prices for rice have increased by 2,7%, pasta – by 0,8%. However, in June 2013, prices for these goods/products were decreased.

In June 2013, price for fresh meat increased by 2,5% in comparison with December of the previous year. Prices for mutton increased by 6,3%, maximum growth of these prices was in May 2013 (by 2,5% in comparison with the previous month). Prices for beef decreased by 0,7% in the 1st quarter of 2013, but in the 2nd quarter of 2013, against, increased by 2,5%. Since the beginning of 2013, prices for chickens/hens have decreased by 2,7%, horsemeat – by 2,1%. Prices for sausages and canned meat products in the first half of the current year were steadily increasing and exceeded prices of December 2012 by 2,8%.

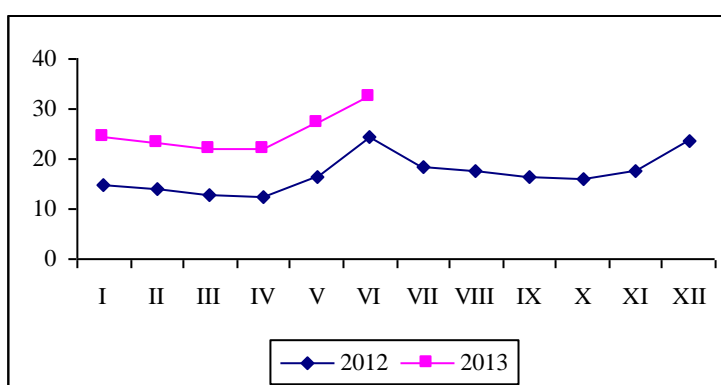
In January-June 2013, prices for dairy products, cheese and eggs decreased totally by 8%, but prices for cheese increased by 0,3%. In the 1st half of 2013, prices for raw milk unbottled decreased by 17,1% (in December 2012 price for raw milk on the average by country made up 34,30 soms, in June

2013 it made up - 28,45 soms), eggs - by 6,3%. It was observed the decrease of prices for all dairy products, except baby's dried milk formula and sour cream.

In the 1st half of 2013, prices for vegetable oils, after their insignificant increase in January 2013, constantly declined and in comparison with December 2012, decreased by 1,6%. Since the beginning of 2013, prices for beef oil/fat have decreased by 5,4%, while prices for mutton oil/fat, against, increased by 1,1%. Butter increased by 1,1%, margarine - by 4,3%.

Potatoes. During the 2nd quarter of 2013, average consumer prices for potatoes have increased from 12,26 soms per kilo in April to 24,51 soms in June, and these prices increased almost in 2 times. In comparison with the 2nd quarter of 2011, the average consumer price has decreased by 26,5% and made up 17,77 soms per kilo.

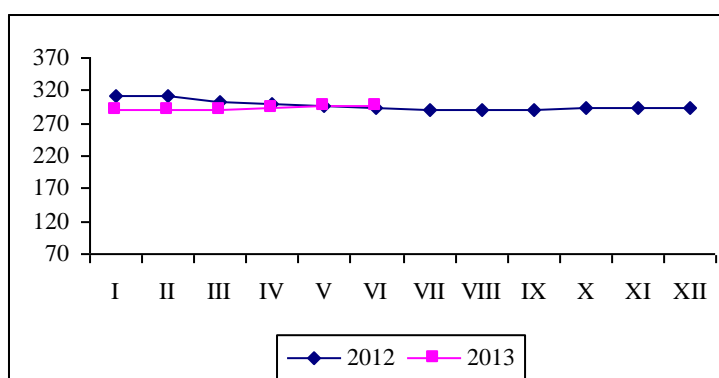
Graph 1: Monthly average consumer prices for potatoes
(soms per kg.)



Mutton. In the 2nd quarter of 2013, the average consumer price for mutton has decreased from 302,68 soms to 297,31 soms per kilogram or the decrease made up 1,8 % in comparison with the 2nd quarter of 2012.

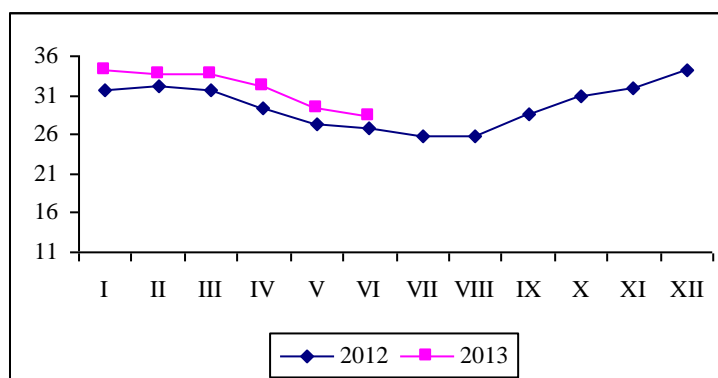
Beef. On average from April to June 2013, prices for beef have increased from 292,07 soms per kilogram in April to 297,55 soms in June and in comparison with the 2nd quarter of 2012 their decrease have made up 0,3 %.

Graph 2: Monthly average consumer prices for beef
(soms per kg.)



Fresh milk. During the 2nd quarter of 2013, average prices for milk has decreased by 11,4 % and in comparison with the 2nd quarter of the previous year, average consumer price increased by 7,9 % and made up 30,00 soms per kilogram.

Graph 3: Monthly average consumer prices for fresh milk
(soms per kg.)



3.2. Money Income of Population

According to results of households sampling survey, the nominal money income per capita in 2012 was valued at 3405,8 KG soms per month and in comparison with the previous year have increased by 9,8 %. The main sources of population money income were income from labour activity, its share in income structure made up 67,4%, incomes from social transfers – 15,8% and from sale of agricultural output produced in private subsidiary plot – 12,6%.

Monthly average per capita real money income of the population in 2012 was valued at 3314,0 KG soms and increased by 6,8% in comparison with the corresponding period of the previous year.

Size of average per capita disposable money income was valued at 3215,8 KG soms. Average per capita disposable money incomes of population living in Bishkek city (by 3771,5soms), Chui oblast (by 3708,5 soms) were higher than the average republican level. Disposable incomes of population living in Osh oblast (3218,9 soms), Batken oblast (3130,8 soms) and Issyk-Kul oblast (3130,0 soms) were close to the average republican level. Incomes of population living in Naryn oblast (2994,4 soms), Talas oblast (2992,5 soms) and Djalal-Abad oblast (2543,4 soms) were considerably less than the average republican level.

The structure of average per capita disposable money incomes of households differs significantly depending on their place of residence. In urban areas, income from labour activity in total revenue has made up 77,5%, in rural areas – 57,6%. The second most important source of income in rural areas was the proceeds of the sale of products produced in private subsidiary plots of population and their share made up 20,7%.

Distribution of total money income by quintile groups of population is for the benefit of 20 % of population with the highest incomes, who have concentrated almost 47% of all money incomes.

Table 20: Population money income by quintile groups
(as a %)

	2011	2012
Money income -total	100	100
including 20 percent groups		
the first (with the lowest income)	6,1	5,2
the second	10,8	9,8
the third	15,8	14,8
the fourth	22,7	22,6
the fifth (with the highest income)	44,6	47,5
Income ratio of 20% highest and 20% lowest income groups of population, in times	7,3	9,1

The monthly average nominal salary per employee in January-June 2013 (excluding small enterprises) was valued at 10977 KG soms and in comparison with January-June 2012 has increased by 4,8 %, and its real size calculated including consumer price index has decreased by 2,8%.

Based on official exchange rate stated by the National Bank of the Kyrgyz Republic, monthly average wage and salary per employee in January-June 2013 has made up 229 US dollars.

Table 21: Monthly average nominal and real wages and salaries by territory¹ in January-June 2013

	Soms	As a % to the corresponding period of the previous year		Real wages and salaries in % to the corresponding period of the previous year
		2012	2013	
Kyrgyz Republic	10977	128,3	104,8	97,2
Batken oblast	8693	143,4	103,0	96,9
Djalal-Abad oblast	9947	137,1	102,5	93,6
Issyk-Kul oblast	8020	133,9	103,3	94,6
Naryn oblast	10263	138,8	100,8	92,1
Osh oblast	7608	153,3	100,8	92,1
Talas oblast	8454	134,4	102,4	96,9
Chui oblast	9496	127,0	109,5	101,9
Bishkek city	14571	121,2	106,4	99,2
Osh city	9555	127,5	102,5	93,7

¹ Excluding small enterprises.

In June 2013 the growth rate of nominal and real wages and salaries decreased in comparison with June 2012.

Table 22: Monthly average nominal and real wages and salaries in June¹

	Soms	As a % to the		Real wages and salaries in % to the corresponding period of the previous year
		Corresponding period of the previous year	Previous period	
2012				
January	9707	136,9	69,1	135,8
February	9845	136,0	101,4	136,0

	Soms	As a % to the		Real wages and salaries in % to the corresponding period of the previous year
		Corresponding period of the previous year	Previous period	
March	10829	140,5	110,0	140,5
I quarter	10129	137,9	88,8	136,7
April	10270	131,6	94,8	131,9
May	10790	116,9	105,1	116,1
June	11375	116,1	105,4	116,7
II quarter	10811	120,9	106,7	121,1
2013				
January	10249	105,6	71,1	98,2
February	10380	105,4	101,3	97,7
March	11219	103,6	108,1	96,1
I quarter	10619	104,8	89,1	97,3
April	11032	107,4	98,3	99,5
May	11250	104,3	102,0	97,0
June	11774	103,5	104,7	95,8
II quarter	11352	105,0	106,9	97,4

¹ Excluding small enterprises.

In January-June 2013 wages and salaries in the budget sphere increased totally by country in comparison with January-June 2012. At the same time, wages and salaries decreased in some oblasts/regions.

**Table 23: Monthly average nominal wages and salaries by territory¹
in January-June 2012**

	Soms				As a % to the corresponding period of the previous year	
	Budget sphere		Non-budget sphere		Budget sphere	Non-budget sphere
	2011	2012	2011	2012		
Kyrgyz Republic	6393	8878	11170	13302	138,9	119,1
Batken oblast	5255	7890	8262	10332	150,1	125,0
Djalal-Abad oblast	5048	7369	11507	15062	146,0	130,9
Issyk-Kul oblast	5329	7416	6978	8575	139,2	122,9
Naryn oblast	6941	9814	9452	12175	141,4	128,8
Osh oblast	4663	7243	6960	9721	155,3	139,7
Talas oblast	5062	7592	10912	11318	150,0	103,7
Chui oblast	5874	8128	8111	9437	138,4	116,3
Bishkek city	9242	11867	13083	15348	128,4	117,3
Osh city	5898	8329	9822	11430	141,2	116,4

¹ Excluding small enterprises.

Growth rate of monthly average gross payroll slowed down in many types of economic activity except enterprises and organizations engaged in water supply, cleaning, waste treatment and obtaining recycled materials, transportation and storage of goods, as well as real estate operations, hotels and restaurants.

**Table 24: Monthly average nominal salary of employees of enterprises and organizations by type
of economic activity¹ in January-June**

	Soms		As a % to the corresponding period of the previous year	
	2012	2013	2012	2013
	Total	10473	10977	128,3
Agriculture, forestry and fishery	5075	5425	107,1	106,9

	Soms		As a % to the corresponding period of the previous year	
	2012	2013	2012	2013
Mining	16157	16472	169,0	102,0
Manufacturing	10286	10981	113,8	106,7
Supply of electricity, gas, steam and conditioned air	14983	17218	120,6	114,9
Water supply, cleaning, waste treatment and obtaining recycled materials	8396	9322	110,7	111,0
Construction	9375	10149	113,0	108,3
Wholesale and retail trade, repair of vehicles and motorcycles	11621	13198	116,5	113,6
Transportation and storage of goods	13390	15126	114,0	113,0
Hotels and restaurants	9543	10625	106,8	111,3
Information and communication	19514	21003	115,7	107,6
Financial intermediation and insurance	22677	24273	110,7	107,0
Real estate operations	7424	8820	104,8	118,8
Professional, scientific and technical activity	14917	15874	124,7	106,4
Administrative and secondary activity	8712	9302	108,4	106,8
Public administration and defence; obligatory social security	10983	11216	113,1	102,1
Education	8227	8274	145,5	100,6
Health and social services	9516	9398	171,4	98,8
Art and recreation	6682	6830	142,8	102,2
Other services	8569	8589	121,2	100,2

¹ Excluding small enterprises.

The sum of total debt on payment of salary as of July 1, 2013 by country as a whole has decreased by 2,3% as compared to the same date of 2012.

From total sum of overdue debt on payment of salary, the significant share of debts belonged to employees of enterprises and organizations in Chui oblast (24,2%), Djalal-Abad oblast (17,5%) and Batken oblast (14,1%).

Table 25: Total debt on payment of salaries/wages by territory¹ as of July 1, 2013

	Mln. Soms	As a % to the corresponding period of	
		the previous year	the previous month
Kyrgyz Republic	295,6	97,7	109,4
Batken oblast	41,7	128,7	109,7
Djalal-Abad oblast	51,8	102,2	135,6
Issyk-Kul oblast	41,2	120,1	102,5
Naryn oblast	27,2	134,0	141,7
Osh oblast (including Osh city)	14,6	47,9	109,0
Talas oblast	10,6	158,2	84,1
Chui oblast	71,5	98,5	92,9
Bishkek city	37,0	67,2	117,1

¹ Excluding small enterprises.

Section IV. Additional materials

Poverty level in the Kyrgyz Republic in 2012

Well-being of the population of the Kyrgyz Republic was measured on the basis of sampling survey of 5016 household budgets. Results of interview show that the poverty level in 2012 estimated on the basis of consumer expenditures by country as whole made up 38,0% and increased by 1,2 percentage points in comparison with the previous year.

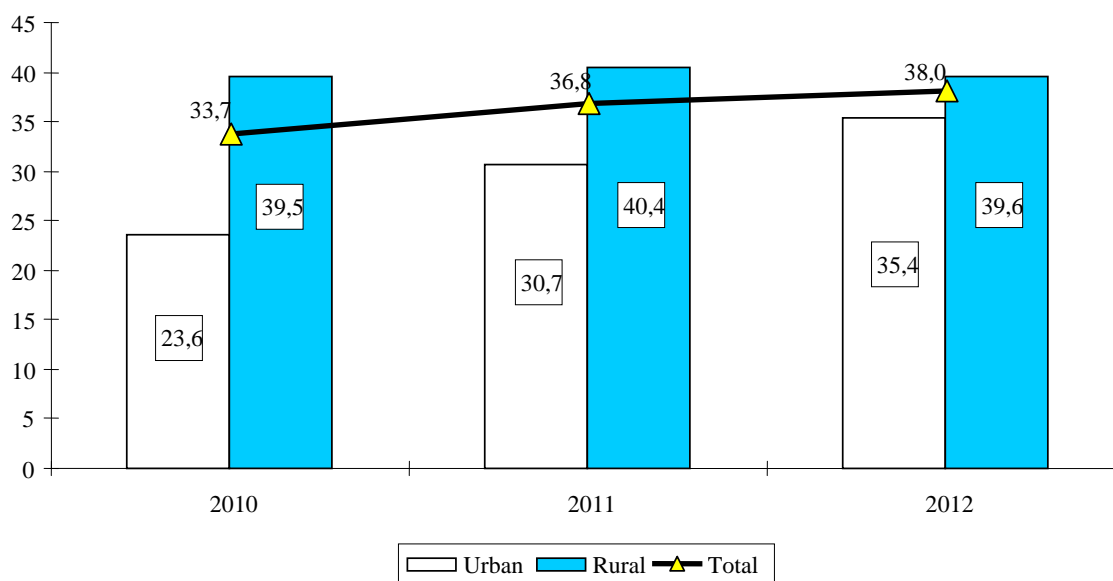
As a threshold value, the poverty line of 2011 indexed for average annual CPI was applied to assess the poverty level. Poverty line was recalculated in accordance with "Methodology of determining the poverty line" approved by the Decision of the Government of the Kyrgyz Republic dated by March 25, 2011, № 115. In 2012, value of total poverty line made up 26182 KG Soms per capita per year, extreme poverty – 15434 KG Soms.

Poverty level in urban settlements increased by 4,6 percentage points, in rural area decreased by 0,9 percentage points.

In 2012, 2 mln. 153 thsd. people lived under the poverty line, of which 65,9% were habitants of rural settlements.

Graph 4: Change of poverty level by place of residence

(as a % to population)



Prevalence of poverty by regions of the country is uneven.

The positive changes in improvement of well-being of the population were observed in Chui, Talas and Naryn oblasts where the poverty level in comparison with the previous year has decreased totally by 10 percentage points, as well as both in urban area and in rural area. Poverty level in Batken and Issyk-Kul oblasts decreased by 1,4 percentage points.

In other regions of the country it is observed the poverty growth in comparison with the previous year. Poverty level in Djalal-Abad oblast increased by 10,4 percentage points. Poverty in urban areas increased by 18,2 percentage points, in rural areas – by 7,3 percentage points and made up 61,7% and 53,4% respectively.

Poverty in Osh oblast (including Osh city) increased by 6,8 percentage points. Poverty of rural and urban population increased by 6,8 and 6,7 percentage points respectively.

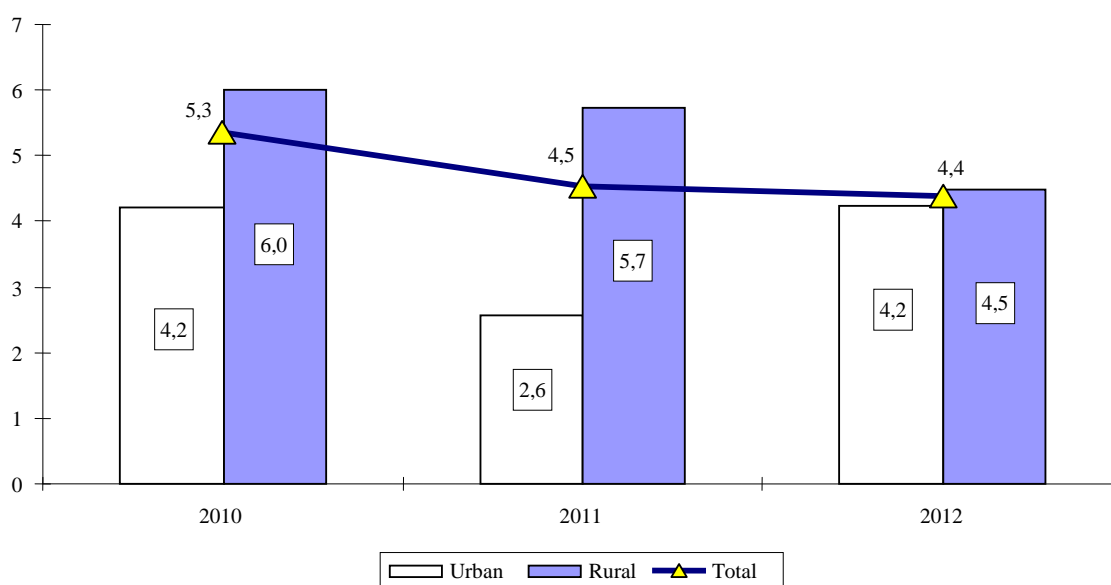
Poverty level in Bishkek city increased by 3,0 percentage points and made up 21,4%.

Table 26: Change of poverty level by territory
(as a % to population)

	2010	2011	2012
Kyrgyz Republic	33,7	36,8	38,0
Batken oblast	33,6	35,6	34,2
Djalal-Abad oblast	44,7	45,3	55,7
Issyk-Kul oblast	38,0	29,5	28,1
Naryn oblast	53,5	49,9	39,9
Osh oblast	41,9	44,7	51,4
Talas oblast	42,3	50,2	39,6
Chui oblast	21,9	28,6	16,6
Bishkek city	7,9	18,4	21,4

In 2012, the extreme poverty level made up 4,4% and decreased by 0,2 percentage point in comparison with the previous year, and the extreme poverty level in rural areas decreased by 1,2 percentage point, while in urban areas it increased by 1,7 percentage points.

Graph 5: Change of extreme poverty level by place of residence
(as a % to population)



The depth and severity of poverty in 2012 increased by 0,2 percentage points in comparison with the previous year and made up 7,7 and 2,4% respectively.

Consumption cost directly depended from population incomes are used for estimation of poverty level. In 2012, disposable money incomes per capita made up 3215,8 KG Soms per month and increased by 9,5% in comparison with the previous year, and their real growth made up 8,7%. Major sources of money income of population were incomes from labor activity, which share in the structure of disposable incomes made up 65,5%, incomes from the sale of agricultural products produced in private subsidiary plots made up 13,3%, and incomes from social transfers – 16,7%.

The share of wages and salaries in the structure of disposable incomes made up 42,9%, individual labor activity – 13,8%. Besides, 7,5% is related to the labor activity of population performed beyond the Kyrgyz Republic. Labor migration, mostly, is still specific for the population of Batken, Osh and

Djalal-Abad oblasts where incomes from labor activity beyond the country have made up 19,2%, 14,9% and 11,5% respectively.

Table 27: Structure of disposable money incomes of population by territory
(as a %)

	Labour activity		Social transfers	Income from private subsidiary plot	Other income
	Total	Including beyond the Kyrgyz Republic			
Kyrgyz Republic	65,5	7,5	16,7	13,3	4,5
Batken oblast	64,6	19,2	15,6	16,4	3,5
Djalal-Abad oblast	67,2	11,5	14,3	14,7	3,9
Issyk-Kul oblast	55,8	3,6	18,8	21,8	3,6
Naryn oblast	44,7	0,0	28,3	22,4	4,7
Osh oblast	64,3	14,9	15,0	13,9	6,8
Talas oblast	40,5	0,0	13,9	43,3	2,3
Chui oblast	66,3	0,8	19,1	11,0	3,6
Bishkek city	79,6	0,5	16,2	0,1	4,0

Influence of the external factor on material welfare of the population of southern regions is obvious. Estimations show that if except labour migrants income from consumption cost, poverty in Osh oblast increasing from 51,4 to 66,7 %, Djalal-Abad oblast – from 55,7 to 61,8%, Batken oblast – from 34,2 to 44,6 %, while in other regions its level practically is not changed. Distinctively, that the population, which fell into the category of poor people, at the exclusion of labour migrants income, was almost completely below the extreme poverty line, and its share increased from 4.4 to 12.4%.

Table 28: Poverty level excluding incomes from labour activity implemented beyond the Kyrgyz Republic
(as a % to population)

	2010	2011	2012
Kyrgyz Republic	40,0	43,4	44,6
Batken oblast	48,3	52,0	48,5
Djalal-Abad oblast	55,1	56,3	61,8
Issyk-Kul oblast	39,6	32,3	29,9
Naryn oblast	54,0	50,2	39,9
Osh oblast	53,4	56,2	66,7
Talas oblast	42,3	50,3	39,6
Chui oblast	22,0	28,8	17,5
Bishkek city	8,3	18,5	21,7

In 2012, deficit of funds of population lived under the poverty line made up 11,4 billion KG Soms, that was higher by 6,7 billion KG Soms than in the previous year.

Still, the population density being near the poverty line is high. The calculations show that the increase of inflation rate by 5% in 2012, at constant current value of the well-being indicator, the share of the poor people would have increased by 5,2 percentage points, while reducing of inflation rate by 5%, the share of poor people would have reduced by 5,5 percentage points. Inflation growth, which is not accompanied by growth of welfare, increases the probability of transition to the category of poor population with the consumption level that is slightly higher than the poverty line.

The dense concentration of population around the poverty line increases the probability of transition of a substantial part of the population from the category of non-poor to poor and vice versa, that threatens the stability process of poverty reduction. Improving of population well-being still remains the most important priority task of the country.

Methodological explanations

The unemployed – people at the age of 16 years and over who during the period under review had no job (income-generating occupation); who were in search for a job i.e. applied to state employment service or used alternative ways of job finding as well as those who were ready to start working.

Gross Domestic Product (GDP) – a general indicator of economic activity of the country, which is calculated in current market prices (GDP nominal) and in comparable prices (GDP real).

Consumer price index for goods and paid services to population (CPI) – characterises the change in the general price level for goods and services over time. The index measures the correlation of the value of actually fixed set of goods and services during the given period to its value during the basic period.

Monthly average nominal salary is calculated by dividing actually accrued salary fund of the staff and part-time employees to the number used for the calculation of average salary and to the number of months in a reporting period.

Average daily per capita calorie characterizes energy value and calories in consumed food products per one household member as well as chemical composition in proteins and fats.

Official unemployment level – is the ratio of people officially registered as unemployed to the number of economically active population expressed in percent.

Availability of food refers to the physical quantities of food at the disposal of the population as a result of domestic food production or market. At the national level availability of food is defined as a combination stocks, commercial import, food aid and own production. Following aspects also refer to availability: climatic conditions, the areas harvested, animal numbers and productivity, producer prices for food, food prices in neighboring countries, and the national policies which determine production, trade, distribution and pricing.

The availability of food per capita is calculated using food balance. A food balance shows for each basic foodstuff the total physical availability and consumption of that foodstuff over a given period of time, usually for 1 year. Total **physical availability** is the sum of opening stocks, production and import in that product in a given period of time. **Total use** is human consumption + animal feed + seeds + losses + exports. Drawn up over a succession of years, food balances usually reveal a trend in total availability, import, export, and the availability of food for human consumption and for fodder. Dividing the annual amount of food available for human consumption by the population gives a key indicator of availability: the average availability of food per capita per year. This measure of food availability is a national average, which does not take into account households' access (i.e. ability to produce, purchase or otherwise obtain) to food.

Access to food refers to the ability of household members to obtain adequate safety and appropriate foods to meet their needs for a healthy and active life. Access can be through production for own consumption, market purchases or donations/transfers. Access differs between households according to employment status, income, family size, location etc. Elements that affect the access also include social security, payment delays in salaries and wages, inflation, the cost of essential foodstuff and other goods and services. National policy, which affects employment, income and inflation, also affects significantly households' access to food.

Use of food refers to the selection, composition, preparation and allocation of food within the household. Utilization of food refers to the ability of the human body to take and use food within the body and convert food into energy. Food use covers knowledge of appropriate diets, and proper allocation of food within the family. The ability of the body to utilize food is affected by its state of health and access to clean drinking water, access to basic health services, food cooking and food storage. The ultimate measure of food security is the nutritional status of the population

List of Abbreviations

GDP	Gross Domestic Product/ Валовой внутренний продукт (ВВП)
WHO	World Health Organization/ Всемирная организация здравоохранения (ВОЗ)
GMCL	Guaranteed Minimum Consumption Level/Гарантированный минимальный уровень потребления (ГМУП)
UMB	Unified (one-time) Monthly Benefit (payment)/Единые ежемесячные пособия (ЕЕП)
EC	European Commission/Европейская Комиссия (ЕК)
CPI	Consumer Price Index for goods and paid services to population/Индекс потребительских цен (ИПЦ) на товары и платные услуги населению
EC FSP	European Commission Food Security Program/Программа Продовольственной Безопасности Европейской Комиссии (ППБ ЕК)
FAO	UN Food & Agriculture Organization/Продовольственная и Сельскохозяйственная Организация ООН (ФАО)
MCB	Minimum Consumer Budget/Минимальный потребительский бюджет (МПБ)

Annex 1

Review of hydro-meteorological conditions on the territory of the Kyrgyz Republic in the 2nd quarter of 2013.

(Source: according to data of the State Agency on Hydrometeorology of the Ministry of Emergency of the Kyrgyz Republic)

Agro meteorological conditions:

April. Monthly average temperature of air in the most regions was above the multiyear norm by 1...3⁰, in farming areas of Chui, Talas, Osh and Djalal-Abad oblasts was close to normal.

Rainfall in the most regions was above the norm by 121-161%, in Alamudun, Ysyk-Ata, Toktogul, Leilek, Suzak, Naryn rayons, in Too-Ashuu and Chon-Ashuu Passes, in Suusamyr and Chatkal Valleys was close to norm by 85-117%, in Batken, Bazar-Korgon, Aksyi, Jungal, Tup rayons and on the east of Alai Valley was below the multiyear norm by 57-76%.

May. Monthly average temperature of air was close to climatic norm and made up 11...14⁰ of warm. During the month, temperature of air at night was 3...8⁰ of warm, in the 1st half of month in some rayons might be frosty 0...-2⁰, day air temperature vibrated from 12...17⁰ to 22...27⁰ of warm.

Monthly rainfall is expected to be around and above the norm (32-55mm).

June. Monthly average temperature of air in the most rayons was close to normal; in Talas, Leilek, Sokuluk, Alai, Uzgen, Suzak, Aksyi, Jeti-Oguz, Naryn rayons, in Too-Ashuu Pass and in Kumtor tract was above the multiyear norm by 1⁰, in Toktogul howe was below the multiyear norm by 1⁰.

Rainfall in the most regions was above the norm by 123-323 %, in Uzgen, Alamudun, Chui, Suzak, Jeti-Oguz, Naryn rayons, in Chatkal Valley and in Chon-Ashuu Pass was close to norm (88-115%), in At-Bashy rayon, in Kumtor tract and on the west of Issyk-Kul rayon was below the multiyear norm by 61-75%.

Hydrological conditions in June 2013:

Water content of the most of rivers of the republic was within the norm. Increased outlet of rivers as Djyrgalan, Alamedin, Talas (Ak Tash), Ur Maral, Tentek Sai, Kurshab, Shahimardan and Kyzyl Suu made up 124-184% of norm. Decreased outlet of rivers as Ak Suu, Karakol, Chon Kemin, Kegety, Iassy, Zerger, Ak Buura and in the middle course of Talas river made up 22-76% of norm.

Water inflow into the Kirov reservoir made up 29% of norm.

Condition of Reservoirs as of June 30, 2013

Reservoirs	Changes during a month	Volume of water in 2013		Volume of water in 2012	
	mln. m ³	mln. m ³	as a %	mln. m ³	as a %
Toktogul	+1879	13616	70	16259	83
Orto-Tokoi	-144	236	50	133	28
Kirov	-150	295	54	363	66

**Таблица 2: Средние потребительские цены на продукты питания
в разрезе регионов в II квартале 2012-2013 гг.**

(сом/кг)

Table 2: Average consumer prices for food by regions in the IInd quarter of 2012-2013

(soms / kg)

Область /Oblast	II квартал / II quarter			2013	
	2012	2013 1	апрель/ April	май/ May	июнь/ June
Картофель / Potatoes					
Баткенская/ Batken	16,82	25,58	23,50	25,75	27,50
Джалал-Абадская / Djalal-Abad	19,21	27,75	24,00	30,00	29,25
Иссык-Кульская / Issyk-Kul	11,54	20,44	16,00	16,88	28,44
Нарынская / Naryn	12,38	26,08	20,50	27,25	30,50
Ошская / Osh	18,22	27,16	23,63	28,75	29,09
Таласская / Talas	12,57	28,11	23,05	24,35	36,94
Чуйская / Chui	16,72	26,66	18,27	32,27	29,42
г.Бишкек/ Bishkek city	18,38	28,08	22,52	26,71	35,01
В среднем по республике / Average by the Republic	17,77	27,28	22,15	27,09	32,58
Молоко свежее / Fresh milk					
Баткенская/ Batken	37,08	32,92	33,13	32,50	33,13
Джалал-Абадская / Djalal-Abad	28,38	28,46	30,00	27,88	27,50
Иссык-Кульская / Issyk-Kul	19,61	25,00	25,00	25,00	25,00
Нарынская / Naryn	23,83	23,67	25,50	24,50	21,00
Ошская / Osh	26,25	27,75	31,33	26,42	25,50
Таласская / Talas	24,79	25,14	25,42	25,00	25,00
Чуйская / Chui	25,31	27,96	27,75	28,06	28,06
г.Бишкек/ Bishkek city	28,61	31,53	34,03	30,97	29,58
В среднем по республике / Average by the Republic	27,81	30,00	32,11	29,44	28,45
Мука 1 сорта / Flour, 1st grade					
Баткенская/ Batken	24,17	28,94	30,00	28,83	28,00
Джалал-Абадская / Djalal-Abad	20,54	29,33	30,50	29,50	28,00
Иссык-Кульская / Issyk-Kul	21,40	30,56	30,67	30,50	30,50
Нарынская / Naryn	23,25	29,00	31,00	28,00	28,00
Ошская / Osh	25,14	29,19	30,42	29,17	28,00
Таласская / Talas	18,52	25,85	27,06	25,25	25,25
Чуйская / Chui	23,20	29,04	29,07	29,07	28,98
г.Бишкек/ Bishkek city	24,35	30,86	30,86	30,86	30,86
В среднем по республике / Average by the Republic	23,87	30,18	30,55	30,17	29,84
Рис среднезерный / Rice (middle sized)					
Баткенская/ Batken	72,92	72,50	72,50	72,50	72,50
Джалал-Абадская / Djalal-Abad	79,17	70,83	70,83	70,83	70,83
Иссык-Кульская / Issyk-Kul	61,67	60,00	60,00	60,00	60,00
Нарынская / Naryn	59,67	63,00	63,00	63,00	63,00
Ошская / Osh	88,75	101,46	97,50	102,50	104,38
Таласская / Talas	60,00	55,83	55,83	55,83	55,83
Чуйская / Chui	59,53	62,92	63,58	62,79	62,38
г.Бишкек/ Bishkek city	61,23	61,54	61,66	61,64	61,30
В среднем по республике / Average by the Republic	66,50	68,42	67,98	68,63	68,67

Таблица 2: (продолжение)

Table 2: (continued)

Область /Oblast	II квартал / II quarter		2013		
	2012	2013 1	апрель/ April	май/ May	июнь/ June
Сахар-песок / Granulated sugar					
Баткенская/ Batken	59,58	53,13	51,38	54,00	54,00
Джалал-Абадская / Djalal-Abad	58,00	50,00	50,00	50,00	50,00
Иссык-Кульская / Issyk-Kul	51,31	47,46	47,67	47,17	47,54
Нарынская / Naryn	53,57	47,78	47,30	48,50	47,55
Ошская / Osh	56,23	52,02	51,25	52,19	52,63
Таласская / Talas	54,99	49,35	48,18	50,14	49,71
Чуйская / Chui	50,93	46,39	45,07	47,52	46,57
г.Бишкек/ Bishkek city	52,90	48,17	46,68	49,23	48,60
В среднем по республике / Average by the Republic	53,77	48,91	47,75	49,67	49,31
Лук / Onions					
Баткенская/ Batken	20,25	16,79	15,00	19,00	16,38
Джалал-Абадская / Djalal-Abad	18,31	23,55	20,65	25,00	25,00
Иссык-Кульская / Issyk-Kul	15,46	18,33	17,00	19,00	19,00
Нарынская / Naryn	16,38	22,40	20,31	22,81	24,06
Ошская / Osh	16,94	20,47	19,33	20,33	21,75
Таласская / Talas	15,87	18,83	16,25	20,25	20,00
Чуйская / Chui	18,66	20,58	18,21	21,65	21,90
г.Бишкек/ Bishkek city	18,80	23,15	20,30	24,03	25,11
В среднем по республике / Average by the Republic	18,33	22,02	19,59	22,86	23,62
Хлопковое масло / Cotton oil					
Баткенская/ Batken	90,00	81,63	81,88	81,50	81,50
Джалал-Абадская / Djalal-Abad	102,52	100,25	100,25	100,25	100,25
Иссык-Кульская / Issyk-Kul	101,50	109,13	109,13	109,13	109,13
Нарынская / Naryn	90,74	0,00	0,00	0,00	0,00
Ошская / Osh	112,77	107,90	107,34	107,68	108,70
Таласская / Talas	90,76	85,62	87,01	84,93	84,93
Чуйская / Chui	103,45	100,54	100,54	100,54	100,54
г.Бишкек/ Bishkek city	108,08	106,55	106,55	106,55	106,55
В среднем по республике / Average by the Republic	106,55	104,62	104,57	104,57	104,72
Баранина / Mutton					
Баткенская/ Batken	329,17	300,00	300,00	300,00	300,00
Джалал-Абадская / Djalal-Abad	314,58	300,00	300,00	300,00	300,00
Иссык-Кульская / Issyk-Kul	267,92	270,31	265,00	271,25	274,69
Нарынская / Naryn	317,50	316,00	299,25	327,50	321,25
Ошская / Osh	308,33	300,00	300,00	300,00	300,00
Таласская / Talas	296,67	287,83	280,00	293,00	290,50
Чуйская / Chui	268,23	274,41	268,14	275,77	279,32
г.Бишкек/ Bishkek city	305,28	301,25	293,47	303,06	307,22
В среднем по республике / Average by the Republic	302,68	297,31	291,72	298,73	301,49

Таблица 2: (продолжение)

Table 2: (continued)

Область /Oblast	II квартал / II quarter		2013		
	2012	2013 1	апрель/ April	май/ May	июнь/ June
Говядина / Beef					
Баткенская/ Batken	268,33	280,00	280,00	280,00	280,00
Джалал-Абадская / Djalal-Abad	290,00	286,73	282,14	288,04	290,00
Иссык-Кульская / Issyk-Kul	274,81	281,46	271,56	285,63	287,19
Нарынская / Naryn	320,00	315,00	307,50	317,50	320,00
Ошская / Osh	280,00	280,00	280,00	280,00	280,00
Таласская / Talas	293,58	285,33	281,00	288,00	287,00
Чуйская / Chui	282,08	277,65	277,38	275,89	279,68
г.Бишкек/ Bishkek city	304,31	304,10	300,90	304,31	307,08
В среднем по республике / Average by the Republic	295,65	295,00	292,07	295,38	297,55
Конина / Horsemeat					
Баткенская/ Batken	-	0,00	0,00	0,00	0,00
Джалал-Абадская / Djalal-Abad	286,67	290,00	290,00	290,00	290,00
Иссык-Кульская / Issyk-Kul	280,00	251,25	251,25	0,00	0,00
Нарынская / Naryn	320,00	320,00	320,00	320,00	320,00
Ошская / Osh	-	0,00	0,00	0,00	0,00
Таласская / Talas	345,00	343,33	330,00	350,00	350,00
Чуйская / Chui	350,00	203,57	203,57	203,57	203,57
г.Бишкек/ Bishkek city	342,67	308,50	309,50	308,00	308,00
В среднем по республике / Average by the Republic	334,55	305,70	306,24	309,40	309,40
Свинина / Pork					
Баткенская/ Batken	-	0,00	0,00	0,00	0,00
Джалал-Абадская / Djalal-Abad	-	0,00	0,00	0,00	0,00
Иссык-Кульская / Issyk-Kul	243,33	242,50	250,00	240,00	237,50
Нарынская / Naryn	-	0,00	0,00	0,00	0,00
Ошская / Osh	295,00	300,00	300,00	300,00	300,00
Таласская / Talas	193,89	213,33	213,33	213,33	213,33
Чуйская / Chui	236,94	270,57	270,92	269,87	270,92
г.Бишкек/ Bishkek city	262,50	301,39	301,67	301,67	300,83
В среднем по республике / Average by the Republic	263,32	293,65	294,33	293,62	293,00
Куры / Chicken					
Баткенская/ Batken	205,00	205,00	205,00	205,00	205,00
Джалал-Абадская / Djalal-Abad	314,17	237,78	235,00	240,00	238,33
Иссык-Кульская / Issyk-Kul	225,00	234,44	240,00	235,00	228,33
Нарынская / Naryn	186,67	167,36	168,75	166,67	166,67
Ошская / Osh	246,67	259,06	257,75	259,44	260,00
Таласская / Talas	229,07	230,00	230,00	230,00	230,00
Чуйская / Chui	251,27	271,89	273,42	272,20	270,05
г.Бишкек/ Bishkek city	291,67	280,97	284,17	284,17	274,58
В среднем по республике / Average by the Republic	275,73	265,89	267,77	268,03	261,88
Яйца / Eggs (10 pieces)					
Баткенская/ Batken	96,25	92,71	93,13	92,50	92,50
Джалал-Абадская / Djalal-Abad	70,38	81,43	81,43	81,43	81,43
Иссык-Кульская / Issyk-Kul	57,25	62,75	64,00	61,50	62,75
Нарынская / Naryn	77,71	83,94	89,94	81,88	80,00
Ошская / Osh	62,92	64,58	65,00	65,00	63,75
Таласская / Talas	75,44	74,93	76,46	74,17	74,17
Чуйская / Chui	70,00	68,19	70,49	68,17	65,92
г.Бишкек/ Bishkek city	67,07	67,33	67,65	68,00	66,33
В среднем по республике / Average by the Republic	67,82	69,26	69,86	69,60	68,32

Продовольственный баланс ¹
по базовым продуктам питания

Таблица 3.

Table 3. Food balance
by basic foodstuffs

Базовые продукты питания / Basic foodstuffs	Хлебопродукты/ Bread and bread products			Пшеница и продукты ее переработки/Wheat and wheat processed products			Картофель / Potatoes			Овощи и бахчевые / Vegetables and melons			Фрукты и ягоды / Fruits and berries		
	в пересчете на зерно, тыс. тонн /expressed in grain, thsd. tons			в пересчете на зерно, тыс. тонн /expressed in grain, thsd. tons			свежий, тыс. тонн / fresh, thsd. tons			свежий, тыс. тонн / fresh, thsd. tons			свежий, тыс. тонн / fresh, thsd. tons		
	2012	I полуг. 2012 / I half of 2012	I полуг. 2013 / I half of 2013	2012	I полуг. 2012 / I half of 2012	I полуг. 2013 / I half of 2013	2012	I полуг. 2012 / I half of 2012	I полуг. 2013 / I half of 2013	2012	I полуг. 2012 / I half of 2012	I полуг. 2013 / I half of 2013	2012	I полуг. 2012 / I half of 2012	I полуг. 2013 / I half of 2013
1. Запасы на начало года / Opening stocks	1295,6	1295,6	1182,9	844,7	844,7	698,9	733,4	733,4	728,1	242,3	242,3	279,7	20,6	20,6	22,7
2. Произведено продовольствия в стране (+) / Food production in the country	1438,3	4,6	10,6	540,5	3,6	9,8	1312,7	18,8	26,2	1059,2	46,9	55,0	222,7	5,0	6,2
3. Импортировано прод. товаров (+) / Food imports	681,9	371,0	289,6	619,4	337,9	266,1	0,2	0,2	0,4	6,4	3,4	4,9	41,6	16,7	23,5
Поступление (1-3) (+) Availability	3415,8	1671,2	1483,1	2004,6	1186,2	974,8	2046,3	752,4	754,7	1307,9	292,6	339,6	284,9	42,3	52,4
4. Расходы на семена (-) / Expenses for seeds	142,5	87,7	86,2	88,8	36,7	35,1	285,5	285,5	281,8	-	0,0	0,0	-	-	-
5. На корм скоту (-) / Fodder	925,0	470,0	417,1	279,3	154,3	126,8	205,9	108,0	64,8	84,8	34,4	27,5	5,0	1,5	1,1
6. Потери (-) / Losses	59,2	6,4	5,7	18,0	11,2	9,2	61,3	22,5	22,6	16,1	3,6	4,2	6,5	0,4	0,5
7. Экспортировано прод. товаров (-) / Food exports	96,6 ²	25,3	23,9	16,3 ²	1,0	0,8	235 ²	45,2	27,9	117 ²	70,7	66,9	94,4 ²	29,1	28,3
8. Наличие для потребления населением (-) / Availablity for consumption by the population	1009,6	506,7	514,7	903,3	454,5	462,0	530,5	261,1	269,5	810,3	144,6	153,5	156,3	11,0	20,0
Использование Consumption	2232,9	1096,1	1047,6	1305,7	657,7	633,9	1318,2	722,3	666,6	1028,2	253,3	252,1	262,2	42,0	49,9
10 Запасы на конец периода / Closing stocks	1182,9	575,1	435,5	698,9	528,5	340,9	728,1	30,1	88,1	279,7	39,3	87,5	22,7	0,3	2,5

¹ Предварительные данные/Preliminary data

² С учетом неучтенного экспорта/Including unaccounted export

Таблица 3.(продолжение)

Table 3. (continued)

Базовые продукты питания / Basic foodstuffs	Мясо и мясные продукты / Meat and meat products			Молоко и молочные продукты / Milk and dairy products			Яйца / Eggs			Жиры растительные / Vegetable oil			Сахар и кондитерские изделия / Sugar and confectionery		
	в пересчете на убойный вес, тыс.тонн /expressed in slaughter weight, thsd. tons			в пересчете на молоко, тыс. тонн / expressed in milk, thsd. tons			миллионов штук / million pieces			тыс. тонн / thsd. tons			в пересчете на сахар, тыс. тонн/expressed in sugar, thsd. tons		
	2012	I полуг. 2012 / I half of 2012	I полуг. 2013 / I half of 2013	2012	I полуг. 2012 / I half of 2012	I полуг. 2013 / I half of 2013	2012	I полуг. 2012 / I half of 2012	I полуг. 2013 / I half of 2013	2012	I полуг. 2012 / I half of 2012	I полуг. 2013 / I half of 2013	2012	I полуг. 2012 / I half of 2012	I полуг. 2013 / I half of 2013
1. Запасы на начало года / Opening stocks	4,8	4,8	4,8	39,5	39,5	59,1	36,3	36,3	22,2	26,4	26,4	9,3	10,4	10,4	5,6
2. Произведено продовольствия в стране (+) / Food production in the country	193,7	88,0	89,2	1382,4	636,2	648,8	387,2	210,2	219,6	0,6	6,8	7,2	13,3	0,0	0,0
3. Импортировано прод. товаров (+) / Food imports	82,6	41,0	28,2	22,3	7,6	7,7	41,4	3,4	4,5	40,1	20,4	20,1	89,8	44,5	45,8
Поступление (1-3) (+) Availability	281,1	133,8	122,2	1444,2	683,3	715,6	464,9	249,9	246,3	67,1	53,6	36,6	113,5	54,9	51,4
4. Расходы на семена (-) / Expenses for seeds	-	-	-	-	-	-	8,5	4,6	4,8	-	-	-	-	-	-
5. На корм скоту (-) / Fodder	0,0	0,0	0,0	113,4	92,7	82,3	1,4	0,8	0,0	-	-	-	-	-	-
6. Потери (-) / Losses	0,3	0,0	0,0	1,7	0,0	0,0	0,0	0,0	0,0	0,0	0,0	0,0	0,1	0,0	0,0
7. Экспортировано прод. товаров (-) / Food exports	71,6 ²	0,2	0,3	120,1 ²	32,2	2,4	0,2	0,0	-	0,0	0,0	0,0	0,7	0,3	0,1
8. Наличие для потребления населением (-) / Availablity for consumption by the population	204,4	105,2	107,3	1149,9	528,5	542,4	432,6	187,2	189,1	57,8	31,9	28,0	107,1	52,7	50,4
Использование Consumption	276,3	105,4	107,6	1385,1	653,4	627,1	442,7	192,6	193,9	57,8	31,9	28,0	107,9	53,0	50,5
10 Запасы на конец периода / Closing stocks	4,8	28,4	14,6	59,1	29,9	88,5	22,2	57,3	52,4	9,3	21,7	8,6	5,6	1,9	0,9

¹ Предварительные данные/Preliminary data² С учетом неучтенного экспорта/Including unaccounted export

**Таблица 4: Баланс питания в виде энергетической ценности по результатам обследований
ежедневного потребления и оценки ежедневных потребностей**

(все население по демографическим группам и регионам)

**Table 4: Food Balance expressed in nutritional values and compared to calculated daily needs based on surveys of daily intake
and on calculated daily needs based on recurrent nutritional surveillance**

(total population by age groups and by region)

	Население, человек		Ккал в день на душу населения		Белки в день на душу населения, грамм		Жиры в день на душу населения, грамм		
	Number, people		C/Calories C/d/p		Proteins g/d/p		Fats g/d/p		
	2011	2012	2011	2012	2011	2012	2011	2012	
Все население	5 551 888	5 663 133							Total population
Баткенская область	448 849	458 890	2 297	2 161	56,8	52,7	69,6	68,0	Batken
Джалал-Абадская область	1 054 226	1 076 694	2 273	2 033	60,0	54,9	55,2	47,2	Jalal-Abad
Иссык-Кульская область	448 003	453 384	2 406	2 496	62,8	66,6	66,0	69,5	Ysyk-Kul
Нарынская область	264 947	268 099	2 064	2 078	59,0	61,0	48,7	48,8	Naryn
Ошская область	1 403 598	1 433 663	2 177	2 072	56,6	54,2	58,4	56,2	Osh
Таласская область	235 327	239 506	2 423	2 365	63,9	65,1	59,0	62,0	Talas
Чуйская область	822 581	838 341	2 457	2 600	65,3	71,6	68,7	71,9	Chui
г.Бишкек	874 357	894 556	2 245	2 023	61,9	55,8	63,0	57,1	Bishkek
Суточное потребление			2 281	2 189	60,3	58,8	61,1	58,9	Daily intake
Суточные потребности			2 101	2 101	73,0	73,0	71,0	71,0	Daily needs
Баланс: (+) или (-)			180	88	-13	-14	-10	-12	Balance: (+) or (-)

Таблица 4: (продолжение)
Table 4: (continued)

	Население, человек		Ккал в день на душу населения		Белки в день на душу населения, грамм		Жиры в день на душу населения, грамм		
	Number, people		C/Calories C/d/p		Proteins g/d/p		Fats g/d/p		
	2011	2012	2011	2012	2011	2012	2011	2012	
Население пенсионного возраста	610 088	636 586							Pensioners
Баткенская область	45 639	45 097	2 567	2 354	65,6	58,3	79,4	75,8	Batken
Джалал-Абадская область	111 257	109 747	2 460	2 229	65,5	60,6	61,8	53,5	Jalal-Abad
Иссык-Кульская область	53 167	59 990	2 846	2 776	75,1	74,6	82,4	79,7	Ysyk-Kul
Нарынская область	29 001	27 853	2 185	2 294	64,9	69,1	55,3	58,0	Naryn
Ошская область	125 800	132 542	2 464	2 323	64,8	61,9	68,6	64,5	Osh
Таласская область	22 790	24 169	2 708	2 666	72,4	74,5	69,6	72,9	Talas
Чуйская область	113 064	121 991	2 923	3 179	80,4	90,2	90,3	94,8	Chui
г.Бишкек	109 369	115 196	2 725	2 497	77,7	71,2	83,0	76,4	Bishkek
Суточное потребление			2 632	2 559	71,4	70,5	75,4	72,8	Daily intake
Суточные потребности			2 100	2 100	71,0	71,0	72,0	72,0	Daily needs
Баланс: (+) или (-)			532	459	0	0	3	1	Balance: (+) or (-)

Таблица 4: (продолжение)
Table 4: (continued)

	Население, человек		Ккал в день на душу населения		Белки в день на душу населения, грамм		Жиры в день на душу населения, грамм		
	Number, people		C/Calories C/d/p		Proteins g/d/p		Fats g/d/p		
	2011	2012	2011	2012	2011	2012	2011	2012	
Население трудоспособного возраста	2 849 352	2 895 438							Active population
Баткенская область	222 036	226 798	2 558	2 409	63,2	59,1	77,4	75,4	Batken
Джалал-Абадская область	539 629	562 223	2 480	2 222	65,4	60,0	60,4	51,6	Jalal-Abad
Иссык-Кульская область	230 682	225 215	2 655	2 774	69,3	74,4	72,7	77,3	Ysyk-Kul
Нарынская область	120 971	123 544	2 335	2 349	66,6	68,3	55,3	55,2	Naryn
Ошская область	673 800	687 797	2 387	2 279	62,4	59,8	63,7	61,6	Osh
Таласская область	114 270	115 718	2 749	2 659	72,5	73,0	67,1	69,7	Talas
Чуйская область	452 225	450 046	2 628	2 774	69,7	76,1	72,6	76,0	Chui
г.Бишкек	495 739	504 098	2 409	2 173	66,3	59,9	67,3	60,9	Bishkek
Суточное потребление			2 494	2 393	66,0	64,3	66,7	64,1	Daily intake
Суточные потребности			2 212	2 212	76,0	76,0	74,0	74,0	Daily needs
Баланс: (+) или (-)			282	181	-10	-12	-7	-10	Balance: (+) or (-)

Таблица 4: (продолжение)
Table 4: (continued)

	Население, человек		Ккал в день на душу населения		Белки в день на душу населения, грамм		Жиры в день на душу населения, грамм		
	Number, people		C/Calories C/d/p		Proteins g/d/p		Fats g/d/p		
	2011	2012	2011	2012	2011	2012	2011	2012	
Дети 1-17	1 989 177	2 035 487							Children 1-17
Баткенская область	164 558	174 573	2 101	1 943	51,5	46,8	63,5	61,2	Batken
Джалал-Абадская область	388 105	383 161	2 020	1 815	53,2	49,0	48,3	41,6	Jalal-Abad
Иссык-Кульская область	158 470	160 940	1 983	2 113	51,4	55,6	53,0	57,9	Ysyk-Kul
Нарынская область	108 692	108 639	1 851	1 869	52,5	55,1	42,5	42,7	Naryn
Ошская область	571 118	585 367	1 993	1 872	51,2	48,5	53,2	50,5	Osh
Таласская область	95 761	95 690	2 030	2 032	53,4	55,8	48,3	52,5	Talas
Чуйская область	249 041	261 930	2 014	2 074	52,8	56,3	53,9	55,4	Chui
г.Бишкек	253 431	265 186	1 856	1 609	50,5	43,7	49,9	43,6	Bishkek
Суточное потребление			1 986	1 886	51,9	50,1	51,9	49,7	Daily intake
Суточные потребности			1 920	1 920	69,0	69,0	66,0	66,0	Daily needs
Баланс: (+) или (-)			66	-34	-17	-19	-14	-16	Balance: (+) or (-)

Таблица 4: (продолжение)
Table 4: (continued)

	Население, человек		Ккал в день на душу населения		Белки в день на душу населения, грамм		Жиры в день на душу населения, грамм		
	Number, people		C/Calories	C/d/p	Proteins	g/d/p	Fats	g/d/p	
	2011	2012	2011	2012	2011	2012	2011	2012	
Дети 1-3 лет	311 525	346 698							Children 1-3
Баткенская область	28 129	39 752	1 517	1 364	38,3	33,3	46,0	43,2	Batken
Джалал-Абадская область	57 557	57 278	1 231	1 157	31,8	31,2	28,8	27,2	Jalal-Abad
Иссык-Кульская область	30 120	30 042	1 319	1 390	35,0	37,1	34,0	35,4	Ysyk-Kul
Нарынская область	19 606	20 858	1 246	1 318	35,9	38,2	29,5	30,0	Naryn
Ошская область	85 985	105 789	1 316	1 248	34,1	32,7	34,4	33,1	Osh
Таласская область	17 647	15 989	1 389	1 356	36,6	37,5	33,7	35,8	Talas
Чуйская область	32 602	29 914	1 331	1 399	36,0	39,1	35,1	36,6	Chui
г.Бишкек	39 878	47 077	1 313	1 153	36,4	31,5	35,1	31,3	Bishkek
Суточное потребление			1 320	1 268	34,9	33,8	34,2	33,5	Daily intake
Суточные потребности			1 661	1 661	62,0	62,0	59,0	59,0	Daily needs
Баланс: (+) или (-)			-341	-393	-27	-28	-25	-26	Balance: (+) or (-)

Таблица 4: (продолжение)
Table 4: (continued)

	Население, человек		Ккал в день на душу населения		Белки в день на душу населения, грамм		Жиры в день на душу населения, грамм		
	Number, people		C/Calories	C/d/p	Proteins	g/d/p	Fats	g/d/p	
	2011	2012	2011	2012	2011	2012	2011	2012	
Дети 4-6 лет	308 856	334 119							Children 4-6
Баткенская область	27 144	25 316	1 781	1 695	44,2	41,7	54,0	52,9	Batken
Джалал-Абадская область	54 911	58 438	1 744	1 530	46,1	41,2	42,7	34,9	Jalal-Abad
Иссык-Кульская область	25 805	30 510	1 702	1 781	43,9	47,4	46,0	47,6	Ysyk-Kul
Нарынская область	17 910	19 084	1 549	1 671	42,2	49,1	33,6	37,0	Naryn
Ошская область	69 664	77 510	1 693	1 624	44,1	42,5	43,3	42,4	Osh
Таласская область	16 768	16 017	1 686	1 754	44,5	47,8	40,0	46,5	Talas
Чуйская область	50 365	60 309	1 684	1 715	44,0	46,3	45,0	45,6	Chui
г.Бишкек	46 289	46 935	1 639	1 444	44,4	39,3	45,0	38,2	Bishkek
Суточное потребление			1 692	1 627	44,4	43,5	44,2	42,2	Daily intake
Суточные потребности			1 661	1 661	62,0	62,0	59,0	59,0	Daily needs
Баланс: (+) или (-)			31	-34	-18	-18	-15	-17	Balance: (+) or (-)

Таблица 4: (продолжение)
Table 4: (continued)

	Население, человек		Ккал в день на душу населения		Белки в день на душу населения, грамм		Жиры в день на душу населения, грамм		
	Number, people		C/Calories	C/d/p	Proteins	g/d/p	Fats	g/d/p	
	2011	2012	2011	2012	2011	2012	2011	2012	
Дети 7-13 лет	810 042	820 830							Children 7-13
Баткенская область	67 527	64 381	2 207	2 122	53,5	50,7	66,4	65,9	Batken
Джалал-Абадская область	159 946	162 490	2 129	1 952	55,8	52,7	50,3	44,4	Jalal-Abad
Иссык-Кульская область	61 656	56 079	2 152	2 242	55,8	58,9	57,8	62,6	Ysyk-Kul
Нарынская область	44 481	41 579	2 003	2 001	56,9	58,9	46,0	45,8	Naryn
Ошская область	238 689	243 081	2 082	1 992	53,7	52,1	55,3	53,4	Osh
Таласская область	36 605	41 100	2 197	2 171	58,1	59,6	51,6	55,3	Talas
Чуйская область	97 813	102 451	2 193	2 247	58,1	61,4	58,9	59,8	Chui
г.Бишкек	103 325	109 667	1 927	1 675	52,1	45,4	52,1	45,7	Bishkek
Суточное потребление			2 101	2 010	55,0	53,6	54,8	52,7	Daily intake
Суточные потребности			2 031	2 031	73,0	73,0	70,0	70,0	Daily needs
Баланс: (+) или (-)			70	-21	-18	-19	-15	-17	Balance: (+) or (-)

Таблица 4: (продолжение)
Table 4: (continued)

	Население, человек		Ккал в день на душу населения		Белки в день на душу населения, грамм		Жиры в день на душу населения, грамм		
	Number, people		C/Calories	C/d/p	Proteins	g/d/p	Fats	g/d/p	
	2011	2012	2011	2012	2011	2012	2011	2012	
Дети 14-17 лет	558 755	533 839							Children 14-17
Баткенская область	41 758	45 125	2 531	2 338	62,0	56,0	76,9	74,8	Batken
Джалал-Абадская область	115 691	104 954	2 395	2 121	63,7	57,1	57,7	48,9	Jalal-Abad
Иссык-Кульская область	40 888	44 309	2 393	2 669	61,7	69,8	64,4	74,3	Ysyk-Kul
Нарынская область	26 695	27 119	2 244	2 230	64,1	66,3	52,2	51,8	Naryn
Ошская область	176 780	158 987	2 320	2 225	58,9	56,5	63,5	61,7	Osh
Таласская область	24 742	22 583	2 474	2 454	64,6	67,3	59,5	63,6	Talas
Чуйская область	68 260	69 257	2 327	2 422	59,8	65,0	62,4	65,4	Chui
г.Бишкек	63 939	61 506	2 239	1 965	61,3	53,2	58,9	53,4	Bishkek
Суточное потребление			2 351	2 256	61,2	59,4	62,0	60,4	Daily intake
Суточные потребности			2 244	2 244	78,0	78,0	74,0	74,0	Daily needs
Баланс: (+) или (-)			107	12	-17	-19	-12	-14	Balance: (+) or (-)

**Таблица 5: Баланс питания в виде энергетической ценности по результатам обследований
ежедневного потребления и оценки ежедневных потребностей**
(все население по квинтильным группам и регионам)

**Table 5: Food Balance expressed in nutritional values and compared to calculated daily needs, based on surveys of daily intake
and on calculated daily needs based on recurrent nutritional surveillance**
(total population by quintile groups and by region)

	Население, человек		Ккал в день на душу населения		Белки в день на душу населения, грамм		Жиры в день на душу населения, грамм		
	Number, people		C/Calories C/d/p		Proteins g/d/p		Fats g/d/p		
	2011	2012	2011	2012	2011	2012	2011	2012	
Первая квинтиль	1 110 056	1 133 606							First quintile
Баткенская область	107 969	141 567	2 101	1 978	51,9	48,9	59,7	58,4	Batken
Джалал-Абадская область	324 039	415 695	1 980	1 726	52,5	45,8	47,5	38,9	Jalal-Abad
Иссык-Кульская область	135 361	78 172	1 911	1 860	47,4	47,3	53,6	51,0	Ysyk-Kul
Нарынская область	94 476	88 405	1 824	1 947	49,2	58,1	37,8	42,0	Naryn
Ошская область	186 539	156 505	1 861	1 591	47,2	43,7	45,7	38,6	Osh
Таласская область	95 594	120 631	1 987	1 959	51,6	54,1	46,9	48,3	Talas
Чуйская область	145 362	101 877	1 920	1 824	49,7	48,2	46,3	45,8	Chui
г.Бишкек	20 717	30 754	1 701	1 446	45,7	38,8	39,7	36,4	Bishkek
Суточное потребление			1 938	1 791	50,1	47,9	48,0	43,9	Daily intake
Суточные потребности			2 101	2 101	73,0	73,0	71,0	71,0	Daily needs
Баланс: (+) или (-)			-163	-310	-23	-25	-23	-27	Balance: (+) or (-)

Таблица 5: (продолжение)
Table 5: (continued)

	Население, человек		Ккал в день на душу населения		Белки в день на душу населения, грамм		Жиры в день на душу населения, грамм		
	Number, people		C/Calories C/d/p		Proteins g/d/p		Fats g/d/p		
	2011	2012	2011	2012	2011	2012	2011	2012	
Вторая квинтиль	1 111 497	1 131 671							Second quintile
Баткенская область	118 706	120 407	2 031	1 974	48,3	48,4	63,3	62,6	Batken
Джалал-Абадская область	273 649	249 850	2 205	2 093	58,1	55,9	51,6	44,8	Jalal-Abad
Иссык-Кульская область	60 846	103 329	2 207	2 082	57,5	56,0	54,5	54,6	Ysyk-Kul
Нарынская область	36 448	48 552	2 035	2 012	59,2	61,0	47,7	47,8	Naryn
Ошская область	332 310	339 234	1 911	1 898	49,4	48,9	50,2	49,9	Osh
Таласская область	59 557	40 191	2 235	2 487	59,0	67,4	52,1	65,9	Talas
Чуйская область	134 817	85 461	2 193	2 525	57,4	67,3	58,1	60,8	Chui
г.Бишкек	95 163	144 646	1 771	1 545	47,3	40,8	46,2	41,7	Bishkek
Суточное потребление			2 056	1 994	53,5	52,6	52,8	50,8	Daily intake
Суточные потребности			2 101	2 101	73,0	73,0	71,0	71,0	Daily needs
Баланс: (+) или (-)			-45	-107	-20	-20	-18	-20	Balance: (+) or (-)

Таблица 5: (продолжение)
Table 5: (continued)

	Население, человек		Ккал в день на душу населения		Белки в день на душу населения, грамм		Жиры в день на душу населения, грамм		
	Number, people		C/Calories C/d/p		Proteins g/d/p		Fats g/d/p		
	2011	2012	2011	2012	2011	2012	2011	2012	
Третья квинтиль	1 110 465	1 133 894							Third quintile
Баткенская область	91 291	66 459	2 290	2 245	57,9	52,4	69,9	72,8	Batken
Джалал-Абадская область	234 960	205 926	2 315	2 105	60,3	58,3	56,4	49,1	Jalal-Abad
Иссык-Кульская область	106 929	59 190	2 335	2 255	63,5	59,2	64,6	62,8	Ysyk-Kul
Нарынская область	55 606	33 535	2 106	2 022	60,3	54,7	50,1	46,1	Naryn
Ошская область	254 401	363 131	2 226	2 004	57,3	52,9	60,8	52,7	Osh
Таласская область	38 229	32 880	2 760	2 562	72,7	70,8	68,9	68,3	Talas
Чуйская область	170 153	152 143	2 224	2 446	59,0	66,6	59,6	63,0	Chui
г.Бишкек	158 896	220 629	1 916	1 709	51,9	46,8	50,2	44,6	Bishkek
Суточное потребление			2 228	2 068	58,7	55,4	59,0	53,8	Daily intake
Суточные потребности			2 101	2 101	73,0	73,0	71,0	71,0	Daily needs
Баланс: (+) или (-)			127	-33	-14	-18	-12	-17	Balance: (+)or (-)

Таблица 5: (продолжение)
Table 5: (continued)

	Население, человек		Ккал в день на душу населения		Белки в день на душу населения, грамм		Жиры в день на душу населения, грамм		
	Number, people		C/Calories C/d/p		Proteins g/d/p		Fats g/d/p		
	2011	2012	2011	2012	2011	2012	2011	2012	
Четвертая квинтиль	1 109 069	1 131 371							Fourth quintile
Баткенская область	61 332	62 773	2 376	2 301	58,4	55,6	72,5	74,1	Batken
Джалал-Абадская область	154 785	138 525	2 579	2 419	69,0	67,1	63,9	62,0	Jalal-Abad
Иссык-Кульская область	73 748	93 941	2 611	2 688	67,4	72,6	71,5	75,0	Ysyk-Kul
Нарынская область	40 758	56 964	2 184	2 065	65,3	60,2	55,5	49,1	Naryn
Ошская область	343 383	311 422	2 241	2 164	59,6	56,7	59,4	60,8	Osh
Таласская область	18 422	27 394	3 007	3 178	80,2	87,9	74,3	89,2	Talas
Чуйская область	155 697	192 882	2 586	2 524	67,8	70,0	69,8	64,4	Chui
г.Бишкек	260 943	247 469	2 160	1 873	59,2	51,6	58,3	51,9	Bishkek
Суточное потребление			2 360	2 263	63,0	61,3	62,9	61,6	Daily intake
Суточные потребности			2 101	2 101	73,0	73,0	71,0	71,0	Daily needs
Баланс: (+) или (-)			259	162	-10	-12	-8	-9	Balance: (+) or (-)

Таблица 5: (продолжение)
Table 5: (continued)

	Население, человек		Ккал в день на душу населения		Белки в день на душу населения, грамм		Жиры в день на душу населения, грамм		
	Number, people		C/Calories C/d/p		Proteins g/d/p		Fats g/d/p		
	2011	2012	2011	2012	2011	2012	2011	2012	
Пятая квинтиль	1 110 801	1 132 591							Fifth quintile
Баткенская область	69 551	67 683	2 993	2 665	76,2	66,1	93,1	87,2	Batken
Джалал-Абадская область	66 793	66 698	3 111	2 710	82,3	72,2	82,6	71,2	Jalal-Abad
Иссык-Кульская область	71 119	118 752	3 413	3 241	90,8	87,4	95,5	93,5	Ysyk-Kul
Нарынская область	37 659	40 643	2 505	2 507	74,8	73,6	67,9	66,2	Naryn
Ошская область	286 964	263 371	2 572	2 570	66,8	66,2	72,8	73,9	Osh
Таласская область	23 525	18 409	3 665	3 203	99,5	88,0	97,5	91,5	Talas
Чуйская область	216 551	305 977	3 071	3 003	84,0	84,0	96,5	92,8	Chui
г.Бишкек	338 639	251 057	2 630	2 794	73,9	78,7	78,7	84,6	Bishkek
Суточное потребление			2 821	2 829	76,3	77,0	82,9	84,1	Daily intake
Суточные потребности			2 101	2 101	73,0	73,0	71,0	71,0	Daily needs
Баланс: (+) или (-)			720	728	3	4	12	13	Balance: (+) or (-)

Таблица 6: Продовольственный баланс домохозяйств в стоимостном выражении по результатам обследований уровня жизни

(все население по доходным квинтильным группам и регионам, сомов)

Table 6: Household Food Balance expressed in economic terms, based on surveys of poverty levels

(total population by income quintile and by region, som)

	Население, человек		Среднедушевые доходы, сом/чел/месяц		Среднедушевые расходы на питание, сом/чел/месяц		Баланс, %		
	Number, people		Average per capita available income, s/ps/month		Average per capita food expenditure, s/ps/month		Balance, %		
	2011	2012	2011	2012	2011	2012	2011	2012	
Все население	5 551 888	5 663 133							Total population
Баткенская область	448 849	458 890	3 073	3 131	1 129	1 013	36,7	32,3	Batken
Джалал-Абадская область	1 054 226	1 076 694	2 672	2 543	1 059	968	39,6	38,1	Jalal-Abad
Иссык-Кульская область	448 003	453 384	2 896	3 130	1 328	1 366	45,9	43,6	Ysyk-Kul
Нарынская область	264 947	268 099	2 506	2 994	710	788	28,3	26,3	Naryn
Ошская область	1 403 598	1 433 663	2 849	3 219	1 322	1 320	46,4	41,0	Osh
Таласская область	235 327	239 506	2 487	2 993	988	881	39,7	29,4	Talas
Чуйская область	822 581	838 341	3 106	3 709	1 456	1 550	46,9	41,8	Chui
г.Бишкек	874 357	894 556	3 437	3 772	1 736	1 358	50,5	36,0	Bishkek
Средневзвешенный баланс			2 936	3 216	1 299	1 228	44,2	38,2	Average weighted balance

Таблица 6: (продолжение)
Table 6: (continued)

	Население, человек		Среднедушевые доходы, сом/чел/месяц		Среднедушевые расходы на питание, сом/чел/месяц		Баланс, %		
	Number, people		Average per capita available income, s/ps/month		Average per capita food expenditure, s/ps/month		Balance, %		
	2011	2012	2011	2012	2011	2012	2011	2012	
Первая квинтиль	1 112 789	1 129 664							First quintile
Баткенская область	64 514	85 312	1 319	1 369	821	773	62,2	56,5	Batken
Джалал-Абадская область	225 453	332 077	1 132	1 223	725	829	64,0	67,8	Jalal-Abad
Иссык-Кульская область	137 642	150 569	1 052	1 136	876	994	83,3	87,5	Ysyk-Kul
Нарынская область	82 525	74 313	1 059	1 166	459	485	43,4	41,6	Naryn
Ошская область	263 883	235 683	1 210	1 307	1 019	1 045	84,2	79,9	Osh
Таласская область	74 514	43 554	1 142	1 110	708	628	62,0	56,5	Talas
Чуйская область	170 256	101 332	1 063	1 299	1 041	923	97,9	71,1	Chui
г.Бишкек	94 002	106 825	1 332	1 456	1 279	996	96,0	68,4	Bishkek
Средневзвешенный баланс			1 153	1 261	893	886	77,5	70,3	Average weighted balance

Таблица 6: (продолжение)
Table 6: (continued)

	Население, человек		Среднедушевые доходы, сом/чел/месяц		Среднедушевые расходы на питание, сом/чел/месяц		Баланс, %		
	Number, people		Average per capita available income, s/ps/month		Average per capita food expenditure, s/ps/month		Balance, %		
	2011	2012	2011	2012	2011	2012	2011	2012	
Вторая квинтиль	1 107 989	1 135 390							Second quintile
Баткенская область	104 509	108 369	1 968	2 119	776	905	39,4	42,7	Batken
Джалал-Абадская область	203 911	239 231	1 913	2 022	951	898	49,7	44,4	Jalal-Abad
Иссык-Кульская область	77 578	83 984	1 910	2 111	1 106	1 182	57,9	56,0	Ysyk-Kul
Нарынская область	59 205	58 141	1 898	2 144	728	601	38,4	28,0	Naryn
Ошская область	318 951	284 779	1 948	2 118	1 202	1 037	61,7	49,0	Osh
Таласская область	54 897	59 964	1 919	1 978	857	684	44,7	34,6	Talas
Чуйская область	140 829	142 418	1 852	2 091	1 090	1 122	58,8	53,6	Chui
г.Бишкек	148 110	158 503	1 886	2 088	1 428	1 046	75,7	50,1	Bishkek
Средневзвешенный баланс			1 916	2 084	1 083	977	56,5	46,9	Average weighted balance

Таблица 6: (продолжение)
Table 6: (continued)

	Население, человек		Среднедушевые доходы, сом/чел/месяц		Среднедушевые расходы на питание, сом/чел/месяц		Баланс, %		
	Number, people		Average per capita available income , s/ps/month		Average per capita food expenditure, s/ps/month		Balance, %		
	2011	2012	2011	2012	2011	2012	2011	2012	
Третья квинтиль	1 109 134	1 133 208							Third quintile
Баткенская область	82 609	111 678	2 483	2 677	1 053	870	42,4	32,5	Batken
Джалал-Абадская область	271 773	209 883	2 498	2 727	1 063	1 032	42,6	37,8	Jalal-Abad
Иссык-Кульская область	75 584	61 085	2 506	2 674	1 361	1 293	54,3	48,4	Ysyk-Kul
Нарынская область	34 722	35 438	2 541	2 727	741	1 037	29,2	38,0	Naryn
Ошская область	313 795	323 097	2 493	2 718	1 253	1 292	50,3	47,5	Osh
Таласская область	36 707	48 035	2 565	2 699	1 146	849	44,7	31,5	Talas
Чуйская область	138 189	192 030	2 481	2 772	1 457	1 424	58,7	51,4	Chui
г.Бишкек	155 754	151 962	2 525	2 736	1 480	1 136	58,6	41,5	Bishkek
Средневзвешенный баланс			2 501	2 724	1 237	1 177	49,4	43,2	Average weighted balance

Таблица 6: (продолжение)
Table 6: (continued)

	Население, человек		Среднедушевые доходы, сом/чел/месяц		Среднедушевые расходы на питание, сом/чел/месяц		Баланс, %		
	Number, people		Average per capita available income, s/ps/month		Average per capita food expenditure, s/ps/month		Balance, %		
	2011	2012	2011	2012	2011	2012	2011	2012	
Четвертая квинтиль	1 112 387	1 130 888							Fourth quintile
Баткенская область	113 705	77 720	3 270	3 675	1 176	1 068	36,0	29,1	Batken
Джалал-Абадская область	189 585	204 102	3 209	3 607	1 180	1 048	36,8	29,1	Jalal-Abad
Иссык-Кульская область	74 356	58 093	3 398	3 656	1 512	1 640	44,5	44,9	Ysyk-Kul
Нарынская область	50 937	52 382	3 270	3 666	754	837	23,0	22,8	Naryn
Ошская область	234 548	327 585	3 278	3 635	1 469	1 458	44,8	40,1	Osh
Таласская область	35 330	42 138	3 321	3 601	1 196	997	36,0	27,7	Talas
Чуйская область	191 516	151 675	3 301	3 675	1 521	1 576	46,1	42,9	Chui
г.Бишкек	222 410	217 193	3 365	3 760	1 683	1 355	50,0	36,0	Bishkek
Средневзвешенный баланс			3 296	3 663	1 403	1 317	42,6	35,9	Average weighted balance

Таблица 6: (продолжение)
Table 6: (continued)

	Население, человек		Среднедушевые доходы, сом/чел/месяц		Среднедушевые расходы на питание, сом/чел/месяц		Баланс, %		
	Number, people		Average per capita available income , s/ps/month		Average per capita food expenditure, s/ps/month		Balance, %		
	2011	2012	2011	2012	2011	2012	2011	2012	
Пятая квинтиль	1 109 589	1 133 983							Fifth quintil
Баткенская область	83 512	75 811	6 130	6 672	1 820	1 589	29,7	23,8	Batken
Джалал-Абадская область	163 504	91 401	5 411	5 910	1 508	1 327	27,9	22,5	Jalal-Abad
Иссык-Кульская область	82 843	99 653	6 789	6 975	2 093	1 967	30,8	28,2	Ysyk-Kul
Нарынская область	37 558	47 825	5 579	6 332	1 142	1 252	20,5	19,8	Naryn
Ошская область	272 422	262 518	5 529	6 228	1 707	1 736	30,9	27,9	Osh
Таласская область	33 879	45 816	5 413	5 858	1 426	1 308	26,3	22,3	Talas
Чуйская область	181 791	250 886	6 260	6 338	2 057	2 127	32,9	33,6	Chui
г.Бишкек	254 080	260 073	5 744	6 364	2 289	1 827	39,9	28,7	Bishkek
Средневзвешенный баланс			5 818	6 342	1 878	1 783	32,3	28,1	Average weighted balance

Таблица 7: Продовольственный баланс домохозяйств в стоимостном выражении по результатам обследований уровня жизни
(все население по расходным квинтильным группам и регионам, сомов)

Table 7: Household Food Balance expressed in economic terms, based on surveys of poverty levels
(total population by expenditure quintile and by region, som)

	Население, человек		Общие среднедушевые расходы, сом/чел/месяц		Среднедушевые расходы на питание, сом/чел/месяц		Баланс, %		
	Number, people		Total per capita expenditures s/ps/month		Average per capita food expenditure, s/ps/month		Balance, %		
	2011	2012	2011	2012	2011	2012	2011	2012	
Все население	5 551 888	5 663 133							Total population
Баткенская область	448 849	458 890	2 593	2 207	1 129	1 013	43,5	45,9	Batken
Джалал-Абадская область	1 054 226	1 076 694	2 140	1 831	1 059	968	49,5	52,9	Jalal-Abad
Иссык-Кульская область	448 003	453 384	2 563	2 644	1 328	1 366	51,8	51,7	Ysyk-Kul
Нарынская область	264 947	268 099	2 380	2 326	710	788	29,8	33,9	Naryn
Ошская область	1 403 598	1 433 663	2 763	2 540	1 322	1 320	47,8	52,0	Osh
Таласская область	235 327	239 506	2 089	1 790	988	881	47,3	49,2	Talas
Чуйская область	822 581	838 341	3 067	3 136	1 456	1 550	47,5	49,4	Chui
г.Бишкек	874 357	894 556	3 707	2 979	1 736	1 358	46,8	45,6	Bishkek
Средневзвешенный баланс			2 762	2 502	1 299	1 228	47,0	49,1	Average weighted balance

Таблица 7: (продолжение)
Table 7: (continued)

	Население, человек		Общие среднедушевые расходы, сом/чел/месяц		Среднедушевые расходы на питание, сом/чел/месяц		Баланс, %		
	Number, people		Total per capita expenditures s/ps/month		Average per capita food expenditure, s/ps/month		Balance, %		
	2011	2012	2011	2012	2011	2012	2011	2012	
Первая квинтиль	1 110 056	1 133 606							First quintile
Баткенская область	107 969	141 567	1 285	1 170	671	641	52,2	54,8	Batken
Джалал-Абадская область	324 039	415 695	1 264	1 052	642	620	50,8	58,9	Jalal-Abad
Иссык-Кульская область	135 361	78 172	1 200	1 128	729	690	60,8	61,1	Ysyk-Kul
Нарынская область	94 476	88 405	1 032	996	416	371	40,3	37,2	Naryn
Ошская область	186 539	156 505	1 327	1 264	763	740	57,5	58,6	Osh
Таласская область	95 594	120 631	1 226	1 128	608	533	49,6	47,2	Talas
Чуйская область	145 362	101 877	1 212	1 019	691	529	57,0	52,0	Chui
г.Бишкек	20 717	30 754	1 355	1 233	814	611	60,0	49,6	Bishkek
Средневзвешенный баланс			1 241	1 107	663	607	53,4	54,8	Average weighted balance

Таблица 7: (продолжение)
Table 7: (continued)

	Население, человек		Общие среднедушевые расходы, сом/чел/месяц		Среднедушевые расходы на питание, сом/чел/месяц		Баланс, %		
	Number, people		Total per capita expenditures s/ps/month		Average per capita food expenditure, s/ps/month		Balance, %		
	2011	2012	2011	2012	2011	2012	2011	2012	
Вторая квинтиль	1 111 497	1 131 671							Second quintile
Баткенская область	118 706	120 407	1 789	1 688	887	853	49,6	50,6	Batken
Джалал-Абадская область	273 649	249 850	1 847	1 687	917	898	49,7	53,2	Jalal-Abad
Иссык-Кульская область	60 846	103 329	1 810	1 669	1 003	1 001	55,4	60,0	Ysyk-Kul
Нарынская область	36 448	48 552	1 832	1 680	618	673	33,7	40,0	Naryn
Ошская область	332 310	339 234	1 821	1 714	1 021	961	56,1	56,1	Osh
Таласская область	59 557	40 191	1 779	1 682	891	973	50,1	57,8	Talas
Чуйская область	134 817	85 461	1 858	1 731	1 043	1 008	56,1	58,2	Chui
г.Бишкек	95 163	144 646	1 886	1 742	982	829	52,0	47,6	Bishkek
Средневзвешенный баланс			1 832	1 703	959	914	52,4	53,7	Average weighted balance

Таблица 7: (продолжение)
Table 7: (continued)

	Население, человек		Общие среднедушевые расходы, сом/чел/месяц		Среднедушевые расходы на питание, сом/чел/месяц		Баланс, %		
	Number, people		Total per capita expenditures s/ps/month		Average per capita food expenditure, s/ps/month		Balance, %		
	2011	2012	2011	2012	2011	2012	2011	2012	
Третья квинтиль	1 110 465	1 133 894							Third quintile
Баткенская область	91 291	66 459	2 467	2 184	1 078	1 094	43,7	50,1	Batken
Джалал-Абадская область	234 960	205 926	2 385	2 198	1 196	1 080	50,1	49,2	Jalal-Abad
Иссык-Кульская область	106 929	59 190	2 386	2 179	1 264	1 201	53,0	55,1	Ysyk-Kul
Нарынская область	55 606	33 535	2 358	2 239	792	785	33,6	35,0	Naryn
Ошская область	254 401	363 131	2 414	2 191	1 258	1 216	52,1	55,5	Osh
Таласская область	38 229	32 880	2 409	2 179	1 265	1 073	52,5	49,3	Talas
Чуйская область	170 153	152 143	2 338	2 194	1 310	1 164	56,1	53,1	Chui
г.Бишкек	158 896	220 629	2 415	2 197	1 256	1 060	52,0	48,3	Bishkek
Средневзвешенный баланс			2 395	2 194	1 215	1 129	50,7	51,5	Average weighted balance

Таблица 7: (продолжение)

Table 7: (continued)

	Население, человек		Общие среднедушевые расходы, сом/чел/месяц		Среднедушевые расходы на питание, сом/чел/месяц		Баланс, %		
	Number, people		Total per capita expenditures s/ps/month		Average per capita food expenditure, s/ps/month		Balance, %		
	2011	2012	2011	2012	2011	2012	2011	2012	
Четвертая квинтиль	1 109 069	1 131 371							Fourth quintile
Баткенская область	61 332	62 773	3 096	2 796	1 371	1 286	44,3	46,0	Batken
Джалал-Абадская область	154 785	138 525	3 083	2 832	1 523	1 468	49,4	51,9	Jalal-Abad
Иссык-Кульская область	73 748	93 941	3 076	2 806	1 535	1 373	49,9	48,9	Ysyk-Kul
Нарынская область	40 758	56 964	3 016	2 886	862	960	28,6	33,3	Naryn
Ошская область	343 383	311 422	3 058	2 778	1 505	1 457	49,2	52,4	Osh
Таласская область	18 422	27 394	3 113	2 798	1 453	1 531	46,7	54,7	Talas
Чуйская область	155 697	192 882	3 129	2 785	1 515	1 508	48,4	54,1	Chui
г.Бишкек	260 943	247 469	3 132	2 814	1 537	1 268	49,1	45,1	Bishkek
Средневзвешенный баланс			3 092	2 803	1 486	1 386	48,1	49,4	Average weighted balance

Таблица 7: (продолжение)
Table 7: (continued)

	Население, человек		Общие среднедушевые расходы, сом/чел/месяц		Среднедушевые расходы на питание, сом/чел/месяц		Баланс, %		
	Number, people		Total per capita expenditures s/ps/month		Average per capita food expenditure, s/ps/month		Balance, %		
	2011	2012	2011	2012	2011	2012	2011	2012	
Пятая квинтиль	1 110 801	1 132 591							Fifth quintile
Баткенская область	69 551	67 683	5 718	4 775	2 107	1 739	36,9	36,4	Batken
Джалал-Абадская область	66 793	66 698	4 547	4 021	2 109	2 015	46,4	50,1	Jalal-Abad
Иссык-Кульская область	71 119	118 752	5 533	4 595	2 631	2 205	47,6	48,0	Ysyk-Kul
Нарынская область	37 659	40 643	5 634	5 280	1 249	1 598	22,2	30,3	Naryn
Ошская область	286 964	263 371	4 745	4 559	1 870	2 108	39,4	46,2	Osh
Таласская область	23 525	18 409	5 056	4 164	1 960	1 655	38,8	39,8	Talas
Чуйская область	216 551	305 977	5 591	4 923	2 298	2 259	41,1	45,9	Chui
г.Бишкек	338 639	251 057	5 412	4 754	2 384	2 103	44,1	44,2	Bishkek
Средневзвешенный баланс			5 250	4 705	2 169	2 105	41,3	44,7	Average weighted balance

Таблица 8. Доля населения, не имеющего доступа к доброкачественной питьевой воде

(процентов)

Table 8. Share of population without access to clean drinking water

	2008	2009	2010	2011	2012	
Кыргызская Республика	9,6	9,6	8,5	7,6	6,8	Kyrgyz Republic
Баткенская область	23,3	27,2	27,3	30,3	30,0	Batken oblast
Джалал-Абадская область	5,6	5,6	5,0	4,6	4,0	Djalal-Abad oblast
Иссык-Кульская область	0,7	0,7	1,2	1,0	1,0	Issyk-Kul oblast
Нарынская область	8,0	4,1	9,9	10,8	10,9	Naryn oblast
Ошская область	22,7	22,9	17,7	13,6	11,3	Osh oblast
Таласская область	4,1	3,9	3,1	3,5	2,4	Talas oblast
Чуйская область	1,4	1,1	1,0	0,4	0,2	Chui oblast
г. Бишкек	0,0	0,0	0,0	0,0	0,0	Bishkek city

Источник: По результатам интегрированного обследования 5016 домашних хозяйств.

Source: According to results of the Integrated Survey of 5016 Households.

Таблица 9. Доля детей, страдающих отставанием в весе
(процентов)

Table 9. Share of children suffering from weight deficit
%

	2008	2009	2010	2011	2012	
Кыргызская Республика	6,4	4,6	7,4	6,9	7,2	Kyrgyz Republic
Баткенская область	3,4	4,1	2,3	3,7	4,2	Batken region
Джалал-Абадская область	7,3	3,6	2,1	6,1	11,5	Djalal-Abad region
Иссык-Кульская область	8,5	4,0	9,1	6,8	6,2	Issyk-Kul region
Нарынская область	4,7	4,2	16,9	14,7	14,0	Naryn region
Ошская область (вкл. г.Ош)	5,2	5,6	12,1	5,5	7,1	Osh region
Таласская область	10,8	4,9	10,1	4,1	1,6	Talas region
Чуйская область	10,5	3,9	9,4	14,8	4,3	Chui region
г. Бишкек	4,9	5,0	1,1	2,2	6,5	Bishkek

Источник: По результатам интегрированного обследования 5016 домашних хозяйств.

Source: According to the results of Integrated Household Survey (5016 hh).

Таблица 10. Индикаторы в области социальной защиты

Table 10. Social Security Indicators

	2008	2009	2010	2011	2012	
Доля крайне бедного населения, получающего единое ежемесячное пособие (ЕЕП)	23,0	18,0	27,4	22,8	6,8	Share of extremely poor population receiving one-time monthly payments (OMP)
Доля домохозяйств с тремя и более детьми, получающих ЕЕП	18,9	22,9	22,5	19,8	18,1	Share of households with three and more children receiving OMP
Доля домохозяйств, состоящих из одного взрослого и детей , получающих ЕЕП	7,2	8,4	7,9	7,7	6,2	Share of households consisting of one adult and children receiving OMP
Доля домохозяйств, где глава домохозяйства женщина , получающих ЕЕП	4,2	4,6	6,0	6,2	5,0	Share of households, where woman is the head of household receiving OMP

**Таблица 11. Индикаторы продовольственной безопасности
Кыргызской Республики**

Table 11. Food Security Indicators of the Kyrgyz Republic

Таблица 11.1. Уровень суточной энергетической ценности рациона человека

(ккал)

Table 11.1. Level of daily energy value of people diet

(kCal)

Период/Period	Фактическая ценность рациона ¹ /Actual dietary value ¹	Минимальная норма/Minimal ratio	Фактическое значение индикатора (гр. 2/гр.3)/Actual meaning of the indicator (paragraph 2/ paragraph 3)
1	2	3	4
янв.-март/Jan-March 2008	2287	2431	0,94
янв.-июнь/Jan-June 2008	2277	2431	0,94
янв.-сент./Jan-Sept. 2008	2299	2431	0,95
2008	2295	2431	0,94
янв.-март/Jan-March 2009	2395	2431	0,99
янв.-июнь/Jan-June 2009	2348	2431	0,97
янв.-сент./Jan-Sept. 2009	2356	2101	1,12
2009	2358	2101	1,12
янв.-март/Jan-March 2010	2380	2101	1,13
янв.-июнь/Jan-June 2010	2323	2101	1,11
янв.-сент./Jan-Sept. 2010	2305	2101	1,10
2010	2319	2101	1,10
янв.-март/Jan-March 2011	2338	2101	1,11
янв.-июнь/Jan-June 2011	2272	2101	1,08
янв.-сент./Jan-Sept. 2011	2260	2101	1,08
2011	2281	2102	1,09
янв.-март/Jan-March 2012	2178	2101	1,04
янв.-июнь/Jan-June 2012	2139	2101	1,02
янв.-сент./Jan-Sept. 2012	2162	2102	1,03
2012	2189	2101	1,04

¹ По результатам интегрированного выборочного обследования бюджетов домашних хозяйств и рабочей силы./¹ According to results of the Integrated Sampling Survey of Household Budgets and Labour Force.

Таблица 11.2. Достаточность потребления отдельного продукта ²
(в среднем на душу населения, кг в месяц)

Table 11.2. Sufficiency of selected foods consumption ²
(average per capita, kg. per month)

	Фактическое потребление/Actual consumption								
	Хлеб и хлебо- продукты/ Bread and bread products	Мясо и мясопро- дукты/Me at and meat products	Молоко и молочные продукты/ Milk and dairy products	Яйца (штук)/ Eggs (pieces)	Овощи и бахчевые/ Vegetables and melons	Фрукты и ягоды/ Fruits and berries	Картофель/ Potatoes	Сахар/ Sugar	Масло раститель- ное/ Vegetable oil
Янв.-март/ Jan-March 2008	15,3	3,0	10,9	5,2	12,2	2,1	8,2	1,4	0,5
Янв.-июнь/ Jan-June 2008	15,4	3,0	15,7	5,2	6,2	1,2	8,0	1,6	0,5
Янв.-сент./ Jan-Sept 2008	16,2	3,3	17,4	5,2	11,0	2,0	8,4	1,6	0,6
2008	15,9	3,1	18,1	6,3	12,6	2,5	8,3	1,8	0,6
Янв.-март/ Jan-March 2009	16,1	3,2	12,2	5,9	12,7	0,9	8,3	1,7	0,9
Янв.-июнь/ Jan-June 2009	16,0	3,1	16,5	5,5	6,6	0,5	8,4	1,7	0,7
Янв.-сент./ Jan-Sept. 2009	16,6	3,4	18,1	5,3	12,0	2,2	8,5	1,6	0,6
2009	15,9	3,2	17,7	6,6	12,6	2,5	8,2	1,8	0,7
Янв.-март / Jan-March 2010	16,0	3,4	12,2	6,2	12,6	1,4	8,2	1,7	1,0
Янв.-июнь/ Jan-June 2010	15,9	3,3	16,5	5,6	6,3	0,5	8,3	1,7	1,0
Янв.-сент./ Jan-Sept. 2010	16,4	3,3	17,8	5,6	12,1	2,3	8,3	1,6	0,7
2010	15,9	3,2	17,7	6,6	12,5	2,5	8,1	1,8	1,0
Янв.-март/ Jan-March 2011	16,1	3,5	12,3	6,2	10,5	1,0	8,3	1,6	1,0
Янв.-июнь/ Jan-June 2011	15,9	3,3	16,5	5,9	4,4	0,5	8,1	1,7	1,0
Янв.-сент./ Jan-Sept. 2011	16,3	3,3	17,7	5,7	12,0	2,3	8,3	1,5	1,0
2011	15,8	3,2	17,8	6,8	12,5	2,4	8,2	1,8	1,0
Янв.-март/ Jan-March 2012 ¹	16,1	3,4	12,3	6,2	7,4	1,0	8,4	1,5	1,0
Янв.-июнь/ Jan-June 2012 ¹	15,9	3,3	16,5	5,9	4,5	0,3	8,2	1,6	1,0
Янв.-сент./ Jan-Sept. 2012 ¹	16,2	3,3	17,8	5,8	12,0	2,3	8,4	1,5	1,0
2012 ¹	15,7	3,2	17,9	6,7	12,6	2,4	8,3	1,7	0,9
Янв.-март 2013 ¹	16,1	3,3	12,4	6,2	7,4	0,9	8,4	1,5	1,0
Jan-June 2013 ¹	15,8	3,3	16,6	5,8	4,7	0,6	8,3	1,5	0,9

¹ Данные предварительные/Preliminary data

² В пересчете на первичный продукт./Expressed in primary product.

Таблица 11.3. Экономическая доступность продуктов питания
(в среднем на душу населения, сомов в месяц)

Table 11.3. Economical availability of foodstuffs
(average per capita, soms per month)

Период/Period	Размер среднемесячных затрат домохозяйств на питание/Monthly average expenditures of households for food	Размер среднемесячных совокупных затрат домохозяйств/Monthly average aggregated expenditures of households	Фактическое значение индикатора (гр. 2/гр.3)*100/ Actual meaning of the indicator (paragraph 2/ paragraph 3)*100
1	2	3	4
Янв.-март/Jan-March 2008	887	1600	55
Янв.-июнь/Jan-June 2008	984	1890	52
Янв.-сент./Jan-Sept 2008	1052	2090	50
2008	1093	2257	48
Янв.-март/Jan-March 2009	1089	2143	51
Янв.-июнь/Jan-June 2009	1076	2177	49
Янв.-сент./Jan-Sept. 2009	1089	2136	51
2009	1095	2264	48
Янв.-март /Jan-March 2010	1018	2198	46
Янв.-июнь/Jan-June 2010	1039	2241	46
Янв.-сент./Jan-Sept. 2010	1080	2366	46
2010	1106	2449	45
Янв.-март/Jan-March 2011	1233	2493	49
Янв.-июнь/Jan-June 2011	1263	2592	49
Янв.-сент./Jan-Sept. 2011	1283	2658	48
2011	1299	2762	47
Янв.-март/Jan-March 2012	1209	2480	49
Янв.-июнь/Jan-June 2012	1199	2435	49
Янв.-сент./Jan-Sept. 2012	1208	2430	50
2012	1228	2502	49

**Таблица 11.4. Дифференциация расходов на питание
по социальным группам**

(в среднем на душу населения, сомов в месяц)

Table 11.4. Differentiation of expenditures for food by social groups

(average per capita, soms per month)

Период/Period	Первая квинтильная группа (с наименьшими доходами)/The first quintile group (with the lowest incomes)	Пятая квинтильная группа (с наибольшими доходами)/The fifth quintile group (with the
Янв.-март/Jan-March 2008	309	1665
Янв.-июнь/Jan-June 2008	399	1792
Янв.-сент./Jan-Sept 2008	472	1836
2008	718	1565
Янв.-март/Jan-March 2009	708	1629
Янв.-июнь/Jan-June 2009	663	1623
Янв.-сент./Jan-Sept. 2009	670	1635
2009	648	1669
Янв.-март /Jan-March 2010	614	1574
Янв.-июнь/Jan-June 2010	583	1615
Янв.-сент./Jan-Sept. 2010	608	1692
2010	671	1680
Янв.-март/Jan-March 2011	790	1742
Янв.-июнь/Jan-June 2011	861	1809
Янв.-сент./Jan-Sept. 2011	879	1870
2011	893	1878
Янв.-март/Jan-March 2012	814	1737
Янв.-июнь/Jan-June 2012	837	1754
Янв.-сент./Jan-Sept. 2012	845	1781
2012	886	1783

Таблица 11.5. Емкость внутреннего рынка отдельных продуктов ²

(тыс. тонн)

Table 11.5. Capacity of internal market of selected products²

(thsd. tons)

	Хлеб и хлебо- продукты/ Bread and bread products	Мясо и мясопро- дукты/ Meat and meat products	Молоко и молочные продукты/ Milk and dairy products	Яйца (млн. штук)/ Eggs (mln. pieces)	Овощи и бахчевые/ Vegetables and melons	Фрукты и ягоды/ Fruits and berries	Картофель/ Potatoes	Сахар/ Sugar	Масло раститель- ное/ Vegetable oil
Янв.-март/ Jan-March 2008	241,6	48,1	171,9	81,7	193,1	32,9	129,5	22,8	7,7
Янв.-июнь/ Jan-June 2008	487,1	93,6	494,9	163,9	196,1	37,5	252,0	50,8	16,1
Янв.-сент./ Jan-Sept 2008	770,1	155,0	825,9	248,3	524,0	96,7	396,8	76,4	28,5
2008	968,3	191,8	1103,2	382,4	768,7	152,0	506,7	112,3	35,0
Янв.-март/ Jan-March 2009	245,9	49,3	186,7	90,2	194,3	14,1	127,2	25,3	14,3
Янв.-июнь/ Jan-June 2009	491,0	95,1	505,7	168,9	201,4	14,1	258,5	51,3	20,7
Янв.-сент./ Jan-Sept. 2009	765,4	156,1	832,7	244,3	552,2	99,6	391,8	72,7	28,8
2009	976,9	198,9	1089,5	405,1	774,3	154,4	504,6	109,1	40,4
Янв.-март / Jan-March 2010	248,3	52,8	190,0	96,5	195,9	22,0	127,2	26,3	15,0
Янв.-июнь/ Jan-June 2010	494,1	101,2	511,6	173,7	196,2	14,4	258,4	51,5	30,0
Янв.-сент./ Jan-Sept. 2010	766,6	153,1	829,8	262,3	563,9	105,8	387,7	74,7	32,8
2010	991,7	201,0	1103,1	412,3	778,9	155,8	504,8	110,6	62,4
Янв.-март/ Jan-March 2011	252,1	54,8	193,6	97,6	165,3	16,4	130,5	25,5	15,1
Янв.-июнь/ Jan-June 2011	499,4	102,5	518,0	185,7	138,3	14,7	253,9	53,1	31,4
Янв.-сент./ Jan-Sept. 2011	771,4	158,0	837,8	268,7	565,2	106,4	390,8	70,0	45,3
2011	999,3	203,6	1120,5	432,1	788,7	151,4	517,8	112,6	62,3
Янв.-март/ Jan-March 2012 ¹	256,1	54,6	195,8	99,5	118,3	16,6	133,3	23,7	15,9
Янв.-июнь/ Jan-June 2012 ¹	506,7	105,2	528,5	187,2	144,6	11,0	261,1	52,7	31,9
Янв.-сент./ Jan-Sept. 2012 ¹	777,0	159,6	856,6	280,1	576,0	111,3	402,6	71,7	46,2
2012 ¹	1009,6	204,4	1149,9	432,6	810,3	156,3	530,5	107,1	57,8
Янв.-март/ Jan-March 2013 ¹	261,8	53,7	201,6	100,8	120,3	14,4	136,6	24,4	16,3
Янв.-июнь/ Jan-June 2013 ¹	514,7	107,3	542,4	189,1	153,5	20,0	269,5	50,4	28,0

¹ Данные предварительные/Preliminary data

² В пересчете на первичный продукт./Expressed in primary product.

Таблица 11.6. Баланс фактического уровня производства продовольствия в Кыргызской Республике
(тыс. тонн)

Table 11.6. Balance of actual level of food production in the Kyrgyz Republic
(thsd. tons)

Производство основных видов продовольствия/Production of main types of food									
Пшеница в весе после доработки/ Wheat in net weight	Мясо в убойном весе/ Meat in slaughter weight	Молоко сырое/ Raw milk	Яйца (млн. штук)/ Eggs (mln. pieces)	Овощи и бахчевые/ Vegetables and melons	Фрукты и ягоды/ Fruits and berries	Картофель/ Potatoes	Сахар/ Sugar	Масло растительное/ Vegetable oil	
Янв.-март/ Jan-March 2008	-	42,8	210,0	72,7	-	-	-	6,6	4,2
Янв.-июнь/ Jan-June 2008	37,9	85,6		193,1	39,4	6,8	22,1	10,7	7,6
Янв.-сент./ Jan-Sept 2008	720,0	133,3	998,7	292,4	742,5	140,8	976,7	10,8	11,0
2008	746,2	184,2	1273,5	369,3	947,0	185,4	1334,9	10,9	18,3
Янв.-март/ Jan-March 2009	-	43,3	216,7	67,9	0,0	-	-	0,0	4,9
Янв.-июнь/ Jan-June 2009	29,0	86,8	607,1	186,1	41,9	4,8	25,4	0,1	7,8
Янв.-сент./ Jan-Sept. 2009	943,3	135,1	1032,6	291,1	791,4	155,8	899,3	0,2	12,1
2009	1056,7	185,5	1314,7	369,3	969,7	200,5	1393,1	5,9	20,6
Янв.-март / Jan-March 2010	-	44,1	224,2	71,5	0,0	-	-	0,0	5,6
Янв.-июнь/ Jan-June 2010	9,5	88,1	628,4	191,4	28,0	3,7	19,0	0,0	9,5
Янв.-сент./ Jan-Sept. 2010	756,3	138,7	1070,6	294,4	803,4	146,0	781,3	0,1	12,8
2010	813,3	187,8	1359,9	373,1	969,3	193,1	1339,4	14,0	18,1
Янв.-март/ Jan-March 2011	-	44,4	223,8	73,8	0,0	-	-	0,0	4,7
Янв.-июнь/ Jan-June 2011	11,1	89,0	627,5	201,8	31,9	4,1	22,4	0,0	8,1
Янв.-сент./ Jan-Sept. 2011	778,6	136,5	1068,0	312,0	787,4	161,0	798,7	0,0	11,1
2011	799,8	190,4	1358,1	392,8	972,4	215,1	1379,2	17,0	15,6
Янв.-март/ Jan-March 2012 ¹	-	43,8	226,2	76,4	0,0	-	-	0,0	4,2
Янв.-июнь/ Jan-June 2012 ¹	3,6	88,0	636,2	210,2	46,9	5,0	18,8	0,0	6,8
Янв.-сент./ Jan-Sept. 2012 ¹	535,3	138,4	1085,0	323,7	916,0	168,4	841,1	0,0	9,9
2012 ¹	540,5	193,7	1382,4	387,2	1059,2	222,7	1312,7	13,3	0,6
Янв.-март 2013 ¹	-	44,6	230,2	83,8	0,0	-	-	9,0	4,6
Янв.-июнь/ Jan-June 2013 ¹	9,8	89,2	648,8	219,6	55,0	6,2	26,2	0,0	7,2

¹ Данные предварительные/Preliminary data

***FOOD SECURITY AND POVERTY INFORMATION BULLETIN
OF THE KYRGYZ REPUBLIC***

Statistical bulletin

Persons responsible for publication:

Ms. Galina Samohleb

Ms. Guljakan Omoralieva

Telephone: +996 (312) 324655,
664164

Published: August, 2013
Format A4 60x84 1/8
Offset printing

Copies: 20

Volume 9 p.1.
Order №

*Printing and Publication Department
Main Computing Center of the Natstatcom
of the Kyrgyz Republic*

NATIONAL STATISTICAL COMMITTEE OF THE KYRGYZ REPUBLIC

QUESTIONNAIRE

for defining user needs in statistical information

Dear user of statistical information,

In order to improve the quality of statistical information and meet demands of users of all categories the National Statistical Committee of the Kyrgyz Republic proposes you to answer the following questions:

Does this publication meet your needs?

What kind of indicators would you like to see in this publication?

We would be very appreciated and grateful if you inform us about shortcomings of our work or give your comments and proposals for improvement of our activity in the field of statistics. Your opinion is very important for us and will be considered mandatory.

Please, send your wishes and recommendations to the following e-mail address: chturdubaeva@stat.kg or NSC KR Web site www.stat.kg. (Column "feedback")

Thank you in advance for the cooperation.