



**The National Statistical Committee
of the Kyrgyz Republic**

**FOOD SECURITY AND POVERTY
INFORMATION BULLETIN OF THE
KYRGYZ REPUBLIC**

1 / 2013

Bishkek city 2013

**The National Statistical Committee
of the Kyrgyz Republic**

**FOOD SECURITY AND POVERTY
INFORMATION BULLETIN OF THE
KYRGYZ REPUBLIC**

1 / 2013

Bishkek city 2013

Editorial Board:

- Chairman - A. Osmonaliev
- Members:
- D. Baijumanov
 - B. Kasymbekov
 - L. Tekeeva
 - K. Isaliev
 - K. Koichumanova
 - R. Plesovskih
 - Ch. Turdubaeva

Food security and poverty information bulletin of the Kyrgyz Republic - B.:
Natstatcom of the Kyrgyz Republic, 2013:- 63

Food security and poverty information bulletin of the Kyrgyz Republic contains the analysis of the situation on food provision in the country for the 1st quarter of 2013. The bulletin combines and systematizes materials on food availability, its production, indicators of access to food, data on its consumption per capita.

Annexes of the bulletin contain review of hydro-meteorological conditions on the territory of the Kyrgyz Republic in the 1st quarter of 2013, information on average retail prices for food for the 1st quarter of 2013, estimates on food balance for the 1st quarter of 2013 by basic foodstuff, nutrition balance in kind of energy value by results of integrated survey of 5016 households for 9 months of 2011-2012, as well as food security indicators, child protection and share of population using adequately/enough iodized salt.

While using statistical data in mass media and scientific papers, disseminating these data through information nets, hard copies, CD discs and other, users have to refer to their source (article 17 of the Law on State Statistics).

Conventional signs:

- Event is not existing;
- ... Data are not available;
- 0,0 Negligible and insignificant value.

In separate cases insignificant discrepancies between total and sum of components are explained by rounding.

Internet: www.stat.kg
e-mail: nsc_mail@stat.kg
© Natstatcom KR, 2013

Contents

Overview	4
Introduction	5
Section I. Socio-Economic Indicators	6
1.1. Gross Domestic Product	6
1.2. Prices and Tariff Indices	7
1.3. Labour Market	7
Section II. Availability of Food	9
2. Agriculture	9
2.1. Crop production	9
2.2. Livestock Production	11
2.3. Producer Price Index of Agricultural Production	12
2.4. Trade of Basic Foodstuffs	12
2.5. Availability of Food Per Capita	13
Section III. Access to Food	14
3.1. Consumer Prices Analysis	14
3.2. Money Income of Population	16
Methodological explanations	19
List of Abbreviations	20
Annex:	
1. Review of Hydro-meteorological Conditions on the territory of the Kyrgyz Republic in the 1 st quarter of 2013	21
2. Average Consumer Prices for Food (by regions, 1 st quarter of 2012-2013)	22
3. Food Balance	25
4. Food Balance expressed in nutritional value and compared to calculated daily needs based on surveys of daily intake and calculated daily needs based on recurrent nutritional surveillance by Socio-Demographic Groups of Population and Regions (9 months of 2011-2012)	27
5. Food Balance expressed in nutritional value and compared to calculated daily needs based on surveys of daily intake and calculated daily needs based on recurrent nutritional surveillance by Quintile Groups and Regions (9 months of 2011-2012)	35
6. Household Food Balance expressed in value terms based on results of surveys of living standard by Income Quintile Groups and Regions (9 months of 2011-2012)	40
7. Household Food Balance expressed in value terms based on results of surveys of living standard by Expenditure Quintile Groups and Regions (9 months of 2011-2012)	46
8. The share of population using adequately iodized salt	52
9. Production of flour in the 1 st quarter of 2013	53
10. Food Security Indicators of the Kyrgyz Republic	54
11. Child Protection Indicators	60

OVERVIEW

Gross domestic product (GDP) calculated by production method, in January-March 2013, according to preliminary estimation, has been valued at 59,0 billion KG Soms and has increased by 7,6% in comparison with the corresponding period of the previous year.

Page 6

In the 1st quarter of 2013, growth of consumer prices has made up 1,1% against 0,8% in January-March 2012.

Page 14

In January-March 2013, gross output of agriculture, hunting and forestry products was valued at 17641,1 million KG Soms and the physical volume index has made up 101,5%.

Page 9

According to the data of the Ministry of Agriculture and Reclamation of the Kyrgyz Republic, as of April 5, 2013, totally by the country, 132,1 thsd. hectares of spring crops were planted, 118,7 thsd. hectares of winter crops were fed, 213,0 thsd. hectares were under spring ploughing.

Page 9

In 2013, prices for eggs (by 17,1%), raw milk (by 10,5%) have increased, but price for meat (in live weight), against, has decreased by 5,4% in comparison with March 2012.

Page 12

Introduction

Pursuant the Rome Declaration, adopted on November 17, 1996 during the World Food Summit, the Kyrgyz Republic as a member of the international community assumed responsibility to "...conduct a policy aimed to the alleviation of poverty and inequality, provision of physical and economical access to all people and at all times to sufficiently dietary adequate food and as well as to its use".

In 1999, the Government of the Kyrgyz Republic, in cooperation with the European Commission in the Kyrgyz Republic has developed and adopted a National Food Security Policy. The policy (and EC funding under the EC-Food Security Programme) sustains reforms in food security related to such sectors as agriculture and social protection.

Food security is a physical availability of a foodstuff in the required quantity, possibility of access to indicated foodstuff (the products made in households, and acquired through the market, gifts and other sources) and consumption of foodstuff in that quantity which are necessary for maintenance of food needs.

Food and nutrition security presumes the availability of adequate food (in the context of quantity, quality, safety and social and cultural acceptability), provision of access and adequate consumption and digestion of such products by all persons at any time for an active and healthy life.

Food Availability: physical existence of quantitatively and qualitatively adequate and safety food items at any moment of time.

Access: all households and household members have sufficient resources to obtain appropriate food (through production, purchase or donation).

Stability: continuous provision of availability, access and use of food. If there is no stability, individuals will suffer from chronic or transitory food insecurity

The aim of the KR Food Security and Poverty Information Bulletin is to provide up-to-date and reliable information and analysis of the current food security situation in the country.

The publication of information bulletin on food security was prepared by the National Statistical Committee of the Kyrgyz Republic. The publication contains information provided by Ministry of Agriculture and Reclamation of the Kyrgyz Republic, State Agency on Hydro Meteorology of the Ministry of Emergency of the Kyrgyz Republic. The bulletin was financed by the European Commission in the Kyrgyz Republic and technical support was provided by UN FAO.

Section I. Socio-economic indicators

The below socio-economic indicators characterize the general situation of economy in the country for the analysis of food security situation

1.1. Gross Domestic Product

Gross domestic product (GDP) calculated by *production method*, in January-March 2013, according to preliminary estimation, has been valued at 59,0 billion KG Soms and has increased by 7,6% in comparison with the corresponding period of the previous year. Real growth rate of GDP excluding «Kumtor» mining company has made up 53,3 billion soms and increased by 4,9%. The volume of GDP calculated per capita has made up 10,9 thsd. soms and in comparison with corresponding period of the previous year has increased by 5,5%.

Table 1: Main socio-economic indicators

	2012	I quarter	
		2012 ¹	2013 ¹
Annual average number of present population, mln. people	5,35	5,31	5,42
Nominal GDP, mln.soms	304350,1	52970,6	59011,3
in % to GDP:			
agriculture	17,5	10,4	9,5
industry and construction	22,5	23,5	24,9
services	46,6	51,7	50,7
GDP per capita, thsd. soms	56,9	10,0	10,9
GDP growth rate, %	99,1	91,6	107,6
CPI ²	102,8	102,1	107,8
CPI for foodstuff and nonalcoholic beverages (soft drinks) ²	95,9	95,5	105,8
CPI for services ²	110,2	110,0	109,8
Monthly average wage and salary, soms	11090 ¹	10129 ⁶	10619 ⁶
Import, mln. US dollars ⁴	5373,9	1064,3	1175,1
Export, mln. US dollars ⁴	1893,8	338,2	302,8
Exchange rate of KG som to ⁵ :			
US dollars	47,00	46,72	47,71
Euro	60,44	61,26	63,08
RUR	1,51	1,55	1,57
KZT	0,31	0,32	0,32
Subsistence level, soms	4341,15	4229,49	4550,72

¹ Data are preliminary.

² As a % to the corresponding period of the previous year.

³ Excluding small enterprises.

⁴ Including volumes of external trade implemented by individuals.

⁵ According to data of the National Bank of the Kyrgyz Republic.

1.2. Prices and Tariff Indices

In March 2013, *Consumer Price Index (CPI)* characterizing inflation rate, in comparison with February 2013 has made up 99,9%.

In March 2013, prices for *foodstuff and nonalcoholic beverages (soft drinks)* have decreased by 0,5% in comparison with the previous month.

The decrease of prices was mainly for eggs (by 4,6%), vegetables (by 4,4%) (of which for potatoes - by 6,3%), granulated sugar (by 1,2%), milk and dairy products (by 0,6%), as well as for cereals, vegetable oil and bread.

At the same time, in March 2013, consumer prices for fruits (by 1,6%), mutton (by 1,2%), animal fats (by 0,6%) and nonalcoholic beverages (by 0,4%) have increased.

Table 2: Price index for main types of food products

(as a % to the previous month)

	Wheat flour		Bread	Ashcake	Beef	Mutton	Milk (poured)	Eggs	Granulated sugar	Sunflower oil
	High quality	First grade								
January	100,2	99,8	100,0	100,0	99,6	99,9	99,7	104,8	99,2	100,1
February	100,1	100,5	100,0	100,0	99,8	100,3	98,4	99,1	99,6	99,6
March	100,0	100,0	99,9	100,0	99,9	101,2	99,6	95,4	98,8	99,7
I quarter ¹	100,3	100,3	99,9	100,0	99,3	101,4	97,7	99,0	97,6	99,4

¹ Cumulative total for three months of the quarter.

In March 2013, prices for fresh fruits have increased by 1,7% (price for apples grew up by 8,7%), while prices for fresh vegetables, against, have decreased by 4,1% in comparison with the previous month.

Table 3: Price index for selected types of fruits and vegetables

(as a % to the previous month)

	Carrot	Onion	Cabbage	Beet	Cucumber	Tomato	Apples	Potatoes
January	106,0	111,1	103,5	116,3	144,7	134,1	105,1	102,1
February	98,9	100,1	98,1	103,8	108,6	108,2	101,4	95,4
March	93,1	95,5	91,8	100,6	113,3	90,1	108,7	93,7
I quarter ¹	97,6	106,2	93,2	121,5	118,6	130,6	115,8	91,3

¹ Cumulative total for three months of the quarter.

In January-March 2013, import of foodstuff has made up 11,2% of total import volume.

Table 4: Import and export of foodstuff

	January - March			
	2012		2013	
	mln. dollars	as a percent to total volume	mln. dollars	as a percent to total volume
Import	127,3	12,0	131,8	11,2
Export	38,9	11,5	31,5	10,4

1.3. Labour market

As of April 1, 2013, according to the data of the Ministry of Labor, Migration and Youth of the Kyrgyz Republic, the number of unemployed population registered in state employment services who search for work has made up 97,3 thsd. persons and in comparison with the same date of 2012, has increased by 1,1% and the number of registered unemployed has decreased by 0,5%.

As of April 1, 2013, 61447 people (of which 9458 people for 3 months of 2013) were registered as unemployed in state employment services. The registered unemployment rate has made up 2,5% of the economically active population. From total number of registered unemployed population, 51,0% were women. There were on the average 9 unemployed persons per one vacant position announced by enterprises.

Table 5: The number of unemployed population registered in state employment services, as of April 1, 2013

	Total, thsd. people	As a % to the corresponding date of the	
		previous year	previous month
Kyrgyz Republic	61447	99,5	99,9
Batken oblast	5998	106,3	101,8
Djalal-Abad oblast	12692	106,0	100,8
Issyk-Kul oblast	4117	89,7	101,1
Naryn oblast	6645	102,4	99,6
Osh oblast	12215	94,6	97,9
Talas oblast	2212	95,6	102,2
Chui oblast	6063	100,6	100,6
Bishkek city	9076	96,3	99,0
Osh city	2429	101,3	100,0

Section II. Availability of Food

Availability of food – is a physical availability of safety and sufficient, quantitative and qualitative food at any time.

2. Agriculture

Agriculture, hunting and forestry. In January-March 2013, gross output of agriculture, hunting and forestry products was valued at 17641,1 million KG Soms and the physical volume index has made up 101,5%.

Table 6: Output of agricultural products

	As a percent to			
	the corresponding period of the previous year		the previous month	
	2012	2013	2012	2013
January	100,8	101,5	-	-
February	100,8	101,2	105,3	104,4
March	100,8	101,6	107,4	105,6
January-March	100,8	101,5	-	-

In January-March 2013, from total production volume, the share of livestock products has made up 96,9%, crop production - 1,9%, services – 1,1%, forestry – 0,1%. The share of peasant farms and private subsidiary plots of citizens in total production volume has made up 96,8%.

Table 7: Gross output of agriculture, hunting and forestry products by territory in January-March 2013

	Mln. soms (in current prices)	As a percent to	
		the previous year	total
Kyrgyz Republic	17641,1	101,5	100
Batken oblast	1341,2	100,3	7,6
Djalal-Abad oblast	2587,2	102,1	14,7
Issyk-Kul oblast	2411,7	102,2	13,7
Naryn oblast	2216,4	100,9	12,6
Osh oblast	3198,8	101,1	18,1
Talas oblast	1071,6	100,5	6,1
Chui oblast	4540,0	101,9	25,7
Bishkek city	183,1	100,4	1,0
Osh city	91,1	100,6	0,5

2.1. Crop Production

According to the data of the Ministry of Agriculture and Reclamation of the Kyrgyz Republic, as of April 5, 2013, totally by the country, 132,1 thsd. hectares of spring crops were planted, 118,7 thsd. hectares of winter crops were fed, 213,0 thsd. hectares were under spring ploughing.

Table 8: Sowing of spring crops by territory as of April 5, 2013

	Under crop – total, hectares	As a % to total
Kyrgyz Republic	132111	100
Batken oblast	15627	11,8
Djalal-Abad oblast	11054	8,4
Issyk-Kul oblast	4310	3,3
Osh oblast	21371	16,2
Talas oblast	681	0,5
Chui oblast	79068	59,8

The largest areas of spring crops were planted in farms of Chui oblast (59,8% of total area of spring sowing), Osh oblast (16,2%) and Batken oblast (11,8%). Sowing of grain crops, vegetables and potatoes planting was carried out, mainly, by farms.

Table 9: Sowing of spring crops by types as of April 5, 2013

	Under crop – total, hectares		2013 in percent to 2012
	2012	2013	
Wheat	23741	45926	in 1,9 times
Barley	52284	76188	in 1,5 times
Corn for grain	1006	2728	in 2,7 times
Sugar beet	274	670	in 2,4 times
Potatoes	1475	2976	in 2 times
Vegetables	1651	3022	in 1,8 times

This year, the higher temperature regime in March led to the earlier timing of spring crops sowing. The biggest share of sown areas in the structure of sowing is under barley (57,6%), wheat (34,8%) and potatoes (2,3%).

It is continued the preparation of seeds to spring sowing. However, by early April 2013, the availability of seeds of agricultural crops dropped behind in demand.

Table 10: Needs and availability of seeds of agricultural crops intended for spring sowing ¹

(as of April 1, 2013, thsd. tons)

	Needs	Availability	Availability of seeds as a percent to needs
Wheat	34,8	28,4	81,4
Barley	25,3	22,1	87,1
Maize	2,4	2,2	90,9
Grains and legumes	3,7	3,7	100,0
Rice, tons	906	906	100,0
Sugar beet, tons	47,0	26,4	56,2
Cotton	1,7	1,3	76,0
Tobacco, tons	0,29	0,29	100,0
Potatoes	238,6	234,3	98,2

¹ Here and in Table 11 - According to the data of the State Seed Inspection of the Ministry of Agriculture and Reclamation of the Kyrgyz Republic.

From 284 thsd. tons of wheat seeds, as of the beginning of April 2013, it was verified 14,8 thsd. tons, of which conditioned - 14,4 thsd. tons, and from 22,1 thsd. tons of barley seeds it was verified 13,3 thsd. tons, of which conditioned - 12,9 thsd. tons.

Table 11: Availability of seeds of agricultural crops intended for spring sowing, by territory¹

(as of April 1, 2013, as a percent to needs)

	Wheat	Maize	Sugar beet	Cotton	Tobacco	Potatoes
Batken oblast	94,3	99,2	-	-	100,0	100,0
Djalal-Abad oblast	59,3	94,7	-	88,3	100,0	94,5
Issyk-Kul oblast	81,1	-	-	-	-	100,0
Naryn oblast	91,3	100,0	-	-	-	100,0
Osh oblast	67,0	80,1	-	64,8	100,0	90,4
Talas oblast	59,7	100,0	-	-	-	99,5
Chui oblast	94,3	90,8	62,0	-	-	100,8

According to the data of the State Seed Inspection of the Ministry of Agriculture and Reclamation of the Kyrgyz Republic, as of April 1, 2013, the highest percentage of supply with wheat seeds was registered

in farms of Batken and Chui oblasts – 94,3%, Naryn oblast – 91,3% and Issyk-Kul oblast – 81,1%. Farms of Batken oblast have been fully supplied with tobacco and potato seeds.

2.2. Livestock Production

In January-March 2013, in comparison with the corresponding period of the previous year, output of main types of livestock products has increased

Table 12: Production of main types of livestock products in farms of all categories in January-March

	Produced - total, tons				As a % to the corresponding period of the previous year			
	2012		2013		2012		2013	
	March	January-March	March	January-March	March	January-March	March	January-March
Livestock and poultry for slaughter (in live weight)	26893	80379	27262	81294	100,8	100,9	101,4	101,1
Raw milk	86304	226227	88238	230224	101,0	101,1	102,2	101,8
Eggs, thsd. pieces	32578	76435	34103	83838	107,3	103,5	104,7	109,7

In March 2013, production of livestock and poultry for slaughter (in live weight) increased by 11%, milk – by 1,8%, eggs – by 9,7% in comparison with the corresponding month of the previous year, which was due to increase of livestock and poultry number.

Table 13: Production of main livestock products by territory in January-March 2013

	Livestock and poultry for slaughter (in live weight)	Raw milk	Eggs thsd. pieces
	<i>Tons</i>		
Kyrgyz Republic	81294	230224	83838
Batken oblast	5781	13819	1970
Djalal-Abad oblast	11101	33588	6701
Issyk-Kul oblast	9965	39381	15913
Naryn oblast	13055	18433	619
Osh oblast	14860	43163	6861
Talas oblast	6055	14445	3119
Chui oblast	19977	66076	48286
Bishkek city	78	197	228
Osh city	422	1122	141
	<i>As a % to the corresponding period of the previous year</i>		
Kyrgyz Republic	101,1	101,8	109,7
Batken oblast	100,0	101,0	101,7
Djalal-Abad oblast	101,8	102,9	106,4
Issyk-Kul oblast	102,0	102,6	104,1
Naryn oblast	100,9	100,6	101,0
Osh oblast	101,0	101,6	105,8
Talas oblast	100,5	100,7	101,0
Chui oblast	101,2	101,5	114,2
Bishkek city	97,5	118,8	75,0
Osh city	100,7	100,3	102,9

Production of livestock and poultry for slaughter (in live weight) has increased by 2,0% in farms of Issyk-Kul oblast, Djalal-Abad oblast – by 1,8%, Chui oblast – by 1,2%; production of milk has increased in farms of Djalal-Abad oblast, Issyk-Kul oblast, Osh oblast and Chui oblast.

The average milk yield per cow made up 337 kg. Milk yield was high in farms of Chui oblast (544 kg), Talas oblast (435 kg) and Issyk-Kul oblast (426 kg).

Production of eggs increased in farms of Chui, Djalal-Abad, Osh and Issyk-Kul oblasts.

2.3. Producer Price Index of Agricultural Production

Producer Price Index. In March 2013, in compared with March of the last year, producer prices for realized (sold) *agricultural products* have increased by 9,3%.

Table 14: Producer price indices of agricultural production
(as a %)

	March 2013	
	to December 2012	to March 2012
Total	107,5	109,3
including for production:		
crop production	112,2	123,2
livestock	103,4	99,1

Growth of prices for eggs (by 17,1%), raw milk (by 10,5%) was higher than in March 2012, price for meat (in live weight), against, decreased by 5,4%.

Table 15: Producers price index of selected types of agricultural production
(as a %)

	March 2013	
	to December 2012	to March 2012
Grain	119,0	133,7
Wheat	117,7	153,1
Vegetables	111,6	113,5
Potatoes	106,3	175,7
Meat (in live weight)	100,2	94,6
Raw milk	110,9	110,5
Eggs	106,6	117,1

2.4. Trade of Basic Foodstuffs

The share of foodstuff import in total import value for the 1st quarter of 2013 has made up 11,2%, export – 10,4%.

Table 16: Import and export of basic foodstuffs
(thsd. tons)

	January-March	
	2012	2013
Import		
Bakery products expressed in grain	195,3	135,1
Sugar and confectioneries	20,5	16,0
Vegetable oil	9,5	8,9
The share of foodstuff in total import value, %	12,0	11,2
Export		
Milk and dairy products expressed in milk	12,0	0,0
Sugar and confectioneries	0,2	0,1
The share of foodstuff in total export value, %	11,5	10,4

2.5. Availability of Food Per Capita

The analysis of food balance shows that the availability of foodstuff per capita on the average for month remains stable (see Table 19 and Annex 3).

Table 17: Level of consumption of basic foodstuffs
(per capita, kg per month)

	January-March	
	2012	2013*
Bakery products (expressed in grain)	16,1	16,1
of which wheat processed products (expressed in grain)	14,2	14,2
Potatoes	8,4	8,4
Vegetables and melons	7,4	7,4
Fruits and berries	0,9	0,9
Sugar and confectioneries	1,5	1,5
Meat and meat products	3,4	3,3
Milk and dairy products	12,3	12,4
Eggs, pieces	6,2	6,2
Vegetable fats	1,0	1,0

* Data are preliminary

More detailed information is provided in Annex (table 3 «Food balance»²).

² Food balances were compiled in accordance with «Methodology of calculation of basic foodstuff balance», approved by the Decree of the National Statistical Committee of the Kyrgyz Republic from September 15, 2010, №19.

Section III. Access to Food

Access: Foodstuff must be accessible both in terms of their physical availability and in terms of purchasing power.

3.1. Consumer Price Analysis

Growth of consumer prices in the 1st quarter of 2013 has made up 1,1% against 0,8% in January–March 2012. The most intensive (by 0,8%) growth of consumer prices was in January 2013 (as in the 1st quarter of 2012). In March 2013, against, prices decreased by 0,1%.

Table 18: Consumer price index in the 1st quarter
(as a %)

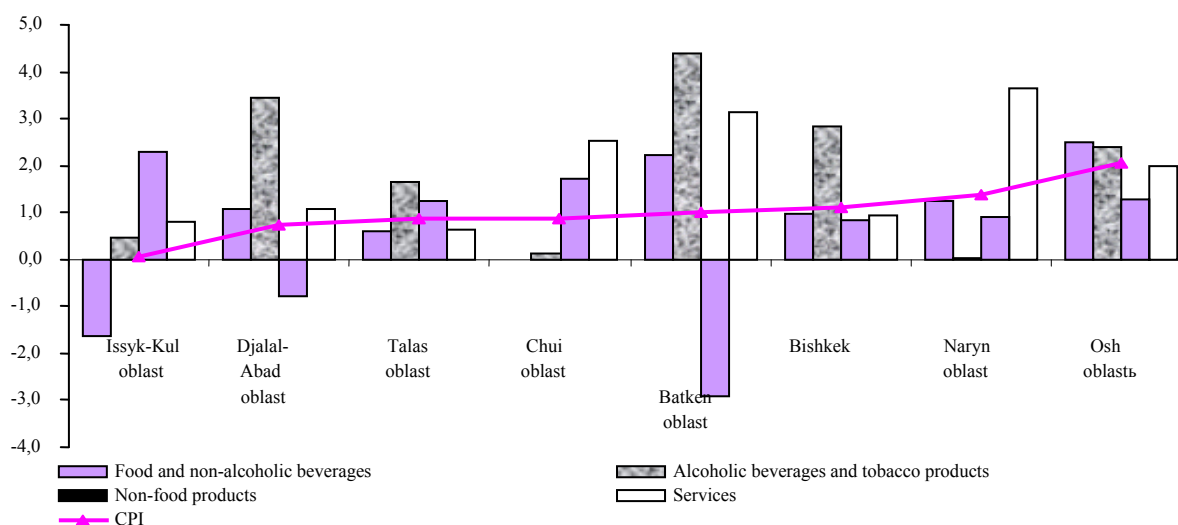
	March to December of the previous year		Monthly average growth rate (decrease) in the 1st quarter	
	2012	2013	2012	2013
Goods and services - total	100,8	101,1	100,3	100,4
Goods	100,7	101,1	100,2	100,4
Food and non-alcoholic beverages	99,4	101,0	99,8	100,3
Alcoholic beverages and tobacco products	101,2	102,5	100,4	100,8
Non-food products	102,6	100,7	100,9	100,2
Services	101,4	101,3	100,5	100,4

In the 1st quarter of 2013, prices and tariffs have increased throughout the country. The highest growth of prices and tariffs (2,1%) was in Osh oblast.

In March 2013, prices for food and non-alcoholic beverages in Issyk-Kul and Chui oblasts were less than the level of December 2012. While in Osh and Batken oblasts prices for food and non-alcoholic beverages increased by 2,5 and 2,2% respectively.

The ambiguous situation is happened with dynamics of consumer prices for bakery products and cereals in the regions of the country. At the same time, prices for bakery products and cereals decreased in Issyk-Kul and Naryn oblasts, in other regions, against, it was observed their increase; the maximum increase was in Chui oblast (by 1,7%). In the 1st quarter of 2013, prices for flour decreased by 2,3% in Naryn oblast and by 1,9% in Osh oblast, for bread – in Djalal-Abad, Talas and Batken oblasts. But, the highest increase of prices both for flour (by 2,4%) and for bread (by 1,2%) was in Chui oblast.

Graph 1: Change of consumer prices by territory in the 1st quarter of 2013
(as a %; increase +, decrease -)



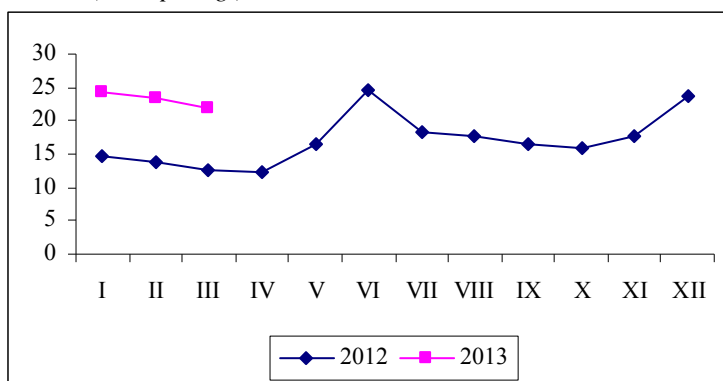
In the 1st quarter of 2013, price for fresh meat increased by 2,6% in Naryn oblast. Prices for meat in Bishkek city, Chui and Issyk-Kul oblasts, against, have decreased. Prices for sausage products and canned meat products have decreased in Chui oblast like in Talas oblast.

In March 2013, prices for milk and dairy products increased in Batken oblast (by 4,3%) and Osh oblast (by 1,3 %) in comparison with December 2012. Granulated sugar increased in Osh and Chui oblasts by 1,0% and 0,2% respectively.

In January-March 2013, prices for vegetable oil increased in Batken oblast (by 0,5%) and Talas oblast (by 0,4%).

Potatoes. During the 1st quarter of 2013, average consumer prices for potatoes have decreased from 24,33 soms per kilo in January to 21,88 soms in March, and the decrease has made up 10,1%. In comparison with the 1st quarter of 2012, the average consumer price has increased by 68,6% and made up 23,18 soms per kilo.

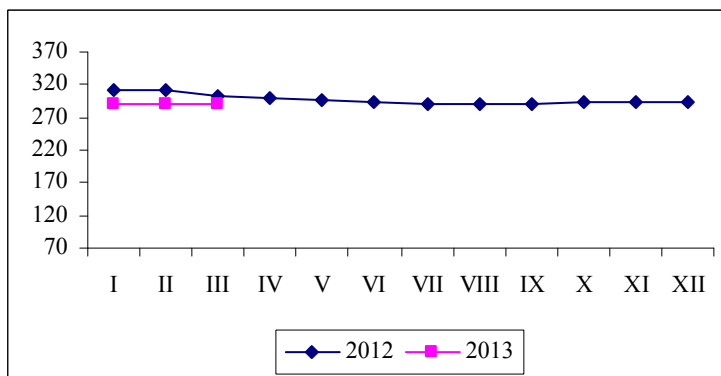
Graph 2: Monthly average consumer prices for potatoes
(soms per kg.)



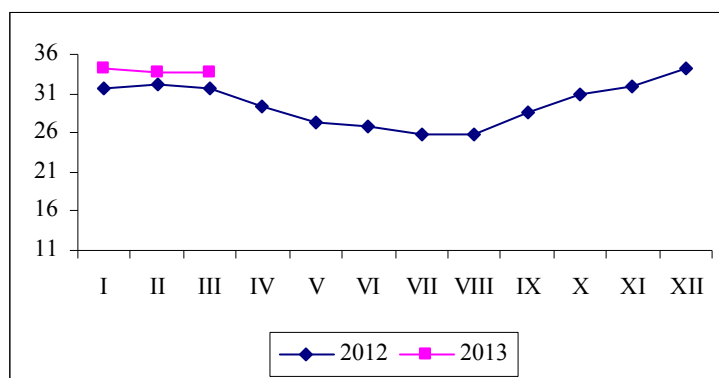
Mutton. In the 1st quarter of 2013, the average consumer price for mutton has decreased by 2,4% in comparison with the 1st quarter of 2012: from 292,48 soms to 285,42 soms per kilogram.

Beef. On the average from January to March 2013, prices for beef have decreased insignificantly from 291,22 soms per kilogram in January to 290,25 soms in March and in comparison with the 1st quarter of 2012 prices have decreased by 5,9%.

Graph 3: Monthly average consumer prices for beef
(soms per kg.)



Fresh milk. During the 1st quarter of 2013, the average price for milk has decreased by 2,0 % and in comparison with the 1st quarter of 2012, the average consumer price increased by 6,3 % and made up 33,86 soms per kilogram.

Graph 4: Monthly average consumer prices for fresh milk*(soms per kg.)*

3.2. Money Income of Population

According to results of households sampling survey, the nominal money income per capita in January-September 2012 was valued at 3350,7 KG soms per month and in comparison with the corresponding period of the previous year have increased by 14,9 %. The main sources of population money income were income from labour activity, its share in income structure made up 68,3%, incomes from social transfers – 15,9% and from sale of agricultural output produced in private subsidiary plot – 11,6%.

Monthly average per capita real money income of the population in January-September 2012 was valued at 3306,6 KG soms and increased by 13,6% in comparison with the corresponding period of the previous year.

Size of average per capita disposable money income was valued at 3159,9 KG soms. Average per capita disposable money incomes of population living in Bishkek city (by 3756,2 soms), Chui oblast (by 3725,8 soms) were higher than average republican level. Disposable incomes of population living in Issyk-Kul oblast (3131,9 soms), Osh oblast (3134,4 soms) and Batken oblast (3090,0 soms) were close to average republican level. Incomes of population living in Naryn oblast (2966,6 soms), Talas oblast (2570,1 soms) and Djalal-Abad oblast (2479,4 soms) were considerably less than average republican level

The structure of average per capita disposable money incomes of households differs significantly depending on their place of residence. In urban areas, income from labour activity in total revenue has made up 77,6%, in rural areas – 58,7%. The second most important source of income in rural areas was the proceeds of the sale of products produced in private subsidiary plots of population and their share made up 19,3%.

Distribution of total money income by quintile groups of population is for the benefit of 20 % of population with the highest incomes, who have concentrated almost 50% of all money incomes.

Table 19: Population money income by quintile groups*(as a %)*

	January-September	
	2011	2012
Money income -total	100	100
including 20 percent groups		
the first (with the lowest income)	5,7	4,6
the second	10,3	9,1
the third	15,4	14,2
the fourth	22,7	22,2
the fifth (with the highest income)	45,9	49,8
Income ratio of 20% highest and 20% lowest income groups of population, in times	8,1	10,7

The monthly average nominal salary per employee in January-March 2013 (excluding small enterprises) was valued at 10619 KG soms and in comparison with January-March 2012 has increased by 4,8 %, and its real size calculated including consumer price index has decreased by 2,7%.

Based on official exchange rate stated by the National Bank of the Kyrgyz Republic, monthly average wage and salary per employee in January-March 2013 has made up 222,5 US dollars.

Table 20: Monthly average nominal and real wages and salaries by territory¹ in January-March 2013

	Soms	As a % to the corresponding period of the previous year		Real wages and salaries in % to the corresponding period of the previous year
		2012	2013	
Kyrgyz Republic	10619	137,8	104,8	97,3
Batken oblast	8325	162,4	104,6	98,1
Djalal-Abad oblast	9564	150,2	101,8	93,1
Issyk-Kul oblast	7878	146,6	103,2	94,5
Naryn oblast	10073	158,6	101,0	91,8
Osh oblast	7533	182,1	101,6	93,8
Talas oblast	8225	141,3	104,1	98,9
Chui oblast	9138	136,5	107,9	100,8
Bishkek city	14060	125,8	106,9	99,5
Osh city	9215	138,3	100,7	93,0

¹ Excluding small enterprises.

In March 2013 the growth rate of nominal and real wages and salaries was decreased in comparison with March 2012.

Table 21: Monthly average nominal and real wages and salaries in March¹

	Soms	As a % to the		Real wages and salaries in % to the corresponding period of the previous year
		Corresponding period of the previous year	Previous period	
2012				
January	9707	136,9	69,1	135,8
February	9845	136,0	101,4	136,0
March	10829	140,5	110,0	140,5
I quarter	10129	137,9	88,8	136,7
2013				
January	10249	105,6	71,1	98,2
February	10380	105,4	101,3	97,7
March	11219	103,6	108,1	96,1
I quarter	10619	104,8	89,1	97,3

¹ Excluding small enterprises.

In January-March 2013 wages and salaries in the budget sphere increased totally by country in comparison with January-March 2012. At the same time, wages and salaries decreased in Djalal-Abad, Naryn, Osh, Talas oblasts and in Osh city.

Total wages payable by country as whole in a monthly payroll fund of enterprises and organizations of the observed types of economic activity as for April 1, 2013 made up 1,6%.

From the total past wages debt, the considerable share of the debt was in Chui oblast (28,6%) and Batken oblast (15,5%).

Table 22: Total debt on payment of wages and salaries on the territory¹ as of April 1, 2013

	Mln. Soms	As a % to the corresponding period of	
		the previous year	the previous month
Kyrgyz Republic	253,7	82,2	87,0
Batken oblast	39,3	96,6	106,5
Djalal-Abad oblast	29,3	49,8	63,8
Issyk-Kul oblast	33,5	94,4	66,7
Naryn oblast	17,1	131,0	69,9
Osh oblast (including Osh city)	13,3	38,1	90,8
Talas oblast	9,7	152,9	114,7
Chui oblast	72,7	98,9	99,8
Bishkek city	38,9	84,6	101,7

¹ Без учета малых предприятий.

Methodological explanations

The unemployed – people at the age of 16 years and over who during the period under review had no job (income-generating occupation); who were in search for a job i.e. applied to state employment service or used alternative ways of job finding as well as those who were ready to start working.

Gross Domestic Product (GDP) – a general indicator of economic activity of the country, which is calculated in current market prices (GDP nominal) and in comparable prices (GDP real).

Consumer price index for goods and paid services to population (CPI) – characterises the change in the general price level for goods and services over time. The index measures the correlation of the value of actually fixed set of goods and services during the given period to its value during the basic period.

Monthly average nominal salary is calculated by dividing actually accrued salary fund of the staff and part-time employees to the number used for the calculation of average salary and to the number of months in a reporting period.

Average daily per capita calorie characterizes energy value and calories in consumed food products per one household member as well as chemical composition in proteins and fats.

Official unemployment level – is the ratio of people officially registered as unemployed to the number of economically active population expressed in percent.

Availability of food refers to the physical quantities of food at the disposal of the population as a result of domestic food production or market. At the national level availability of food is defined as a combination stocks, commercial import, food aid and own production. Following aspects also refer to availability: climatic conditions, the areas harvested, animal numbers and productivity, producer prices for food, food prices in neighboring countries, and the national policies which determine production, trade, distribution and pricing.

The availability of food per capita is calculated using food balance. A food balance shows for each basic foodstuff the total physical availability and consumption of that foodstuff over a given period of time, usually for 1 year. Total **physical availability** is the sum of opening stocks, production and import in that product in a given period of time. **Total use** is human consumption + animal feed + seeds + losses + exports. Drawn up over a succession of years, food balances usually reveal a trend in total availability, import, export, and the availability of food for human consumption and for fodder. Dividing the annual amount of food available for human consumption by the population gives a key indicator of availability: the average availability of food per capita per year. This measure of food availability is a national average, which does not take into account households' access (i.e. ability to produce, purchase or otherwise obtain) to food.

Access to food refers to the ability of household members to obtain adequate safety and appropriate foods to meet their needs for a healthy and active life. Access can be through production for own consumption, market purchases or donations/transfers. Access differs between households according to employment status, income, family size, location etc. Elements that affect the access also include social security, payment delays in salaries and wages, inflation, the cost of essential foodstuff and other goods and services. National policy, which affects employment, income and inflation, also affects significantly households' access to food.

Use of food refers to the selection, composition, preparation and allocation of food within the household. Utilization of food refers to the ability of the human body to take and use food within the body and convert food into energy. Food use covers knowledge of appropriate diets, and proper allocation of food within the family. The ability of the body to utilize food is affected by its state of health and access to clean drinking water, access to basic health services, food cooking and food storage. The ultimate measure of food security is the nutritional status of the population.

List of Abbreviations

GDP	Gross Domestic Product/ Валовой внутренний продукт (ВВП)
WHO	World Health Organization/ Всемирная организация здравоохранения (ВОЗ)
GMCL	Guaranteed Minimum Consumption Level/Гарантированный минимальный уровень потребления (ГМУП)
UMB	Unified (one-time) Monthly Benefit (payment)/Единые ежемесячные пособия (ЕЕП)
EC	European Commission/Европейская Комиссия (ЕК)
CPI	Consumer Price Index for goods and paid services to population/Индекс потребительских цен (ИПЦ) на товары и платные услуги населению
EC FSP	European Commission Food Security Program/Программа Продовольственной Безопасности Европейской Комиссии (ППБ ЕК)
FAO	UN Food & Agriculture Organization/Продовольственная и Сельскохозяйственная Организация ООН (ФАО ООН)

Annex

Annex 1. Review of hydro meteorological conditions on the territory of the Kyrgyz Republic in the 1st quarter of 2013.

(Source: State Agency on Hydrometeorology of the Ministry of Emergency of the Kyrgyz Republic)

Agro meteorological conditions:

January. Monthly average temperature of air in the most regions of Kyrgyzstan was close to the normal, in Chui oblast, on the east of Alai Valley, in Kara-Suui region, Suuzak region, in Kumtor tract was above the normal by 1...3 degrees, in Suusamyр and Chatkal Valleys was below the multiyear normal by 1 degree.

Rainfall in the most regions of the country was below the normal by 14-89%, in Sokuluk, Chui, Alamudun, Bazar-Korgon regions was close to the normal (93-109%), in Alamudun, Yssyk-Ata, Panfilov, Leilek, Alai, Aksyi, Toktogul, Chatkal, Jeti-Oguz and At-Bashy regions was above the normal by 120-154%.

February. Monthly average temperature of air in the most regions of Kyrgyzstan was above the normal by 1...4 degrees, in Chon-Ashuu Pass was below the climatic normal by 0,6 degrees.

Rainfall in Batken and Ak-Suu regions, in Chatkal and Suusamyр Valleys, in Alaiku tract was below the climatic normal by 13-71%. Rainfall in other territory of the country was close to normal and above the normal by 80-223%.

March. Monthly average temperature of air in the most regions of Kyrgyzstan was above the multiyear normal by 4...6 degrees, in Issyk-Kul, Alai, Batken and Kara-Sui regions was above the multiyear normal by 3 degree.

Rainfall in the most regions of the country was below the normal by 21–77 %, in Alamudun, Sokuluk, Assyk-Ata, Toktogul regions was close to the normal (87-120%), in Talas and Chatkal Valleys, in Jaiyl and Bazar-Korgon regions was above the multiyear normal by 122-188%.

Hydrological conditions in March 2013:

During the month it was observed the increased outlet of the most rivers of the country (121-278% of normal). Decreased outlet (46-75% of the normal) was observed in Talas (mid flow) and Ak Buura rivers.

Water content of Karakol, Chon Ak Suu, Chon Kemin, Ak Suu, Kara Balta, Padysha Ata, Yassy, Kara Kuldja, Zerger, Aravan Sai, Isfairam Sai, Changet rivers and in riverheads of Naryn and Talas rivers was within the normal.

Water inflow in Kirov reservoir made up 79%. Water inflow in Orto-Tokoi and Toktogul reservoirs is not calculated due to lack of measured water discharge/consumption in Chu-Kochkor river, Uzun Akmat river – Usta-Sai water mouth, in Chychkan river – Bala Chychkan water mouth because of emergency conditions of hydro posts.

Condition of Reservoirs as of March 31, 2013

Reservoirs	Changes during a month, mln. m ³	Volume of water in 2013		Volume of water in 2012	
		mln. m ³	as a % of volume	mln. m ³	as a % of volume
Toktogul	-875	11257	58	13220	68
Orto-Tokoi	+67	474	101	462	98
Kirov	+42	462	84	495	90

**Таблица 2: Средние потребительские цены на продукты питания
в разрезе регионов в I квартале 2012-2013 гг.**
(сом/кг)

Table 2: Average consumer prices for food by regions in the 1st quarter of 2012-2013
(soms / kg)

Область /Oblast	I квартал / I quarter		2013		
	2012	2013	январь/ January	февраль/ February	март/ March
Картофель / Potatoes					
Баткенская/ Batken	18,00	23,50	25,00	23,00	22,50
Джалал-Абадская / Djalal-Abad	15,00	25,87	28,00	26,20	23,40
Иссык-Кульская / Issyk-Kul	6,71	14,96	15,50	15,75	13,63
Нарынская / Naryn	11,65	23,92	25,00	24,00	22,75
Ошская / Osh	15,69	23,93	25,17	23,83	22,79
Таласская / Talas	10,45	22,65	23,25	23,96	20,75
Чуйская / Chui	13,62	20,93	23,41	20,69	20,93
г.Бишкек/ Bishkek city	13,58	23,63	24,50	23,84	22,57
В среднем по республике / On the average by the country	13,75	23,18	24,33	23,33	21,88
Молоко свежее / Fresh milk					
Баткенская/ Batken	32,50	37,60	38,75	38,44	35,63
Джалал-Абадская / Djalal-Abad	36,25	37,33	39,38	37,50	35,13
Иссык-Кульская / Issyk-Kul	21,53	25,00	25,00	25,00	25,00
Нарынская / Naryn	29,33	31,58	33,75	32,00	29,00
Ошская / Osh	32,50	34,17	35,00	34,17	33,33
Таласская / Talas	27,50	28,33	29,17	29,17	26,67
Чуйская / Chui	26,25	30,52	32,20	30,78	30,52
г.Бишкек/ Bishkek city	32,78	34,44	34,31	34,03	35,00
В среднем по республике / On the average by the country	31,84	33,86	34,27	33,70	33,60
Мука 1 сорта / Flour, 1st grade					
Баткенская/ Batken	26,00	29,89	29,67	30,00	30,00
Джалал-Абадская / Djalal-Abad	22,21	31,00	31,00	31,00	31,00
Иссык-Кульская / Issyk-Kul	22,17	30,83	30,83	30,83	30,83
Нарынская / Naryn	23,25	31,83	32,00	32,00	31,50
Ошская / Osh	27,47	31,83	31,83	32,00	31,67
Таласская / Talas	19,19	28,00	28,00	28,00	28,00
Чуйская / Chui	24,17	29,03	28,92	29,10	29,03
г.Бишкек/ Bishkek city	25,02	31,03	30,92	31,08	31,08
В среднем по республике / On the average by the country	24,89	30,91	30,83	30,98	30,92
Рис среднезерный / Rice (middle sized)					
Баткенская/ Batken	72,22	72,50	72,50	72,50	72,50
Джалал-Абадская / Djalal-Abad	74,58	67,19	63,75	68,00	69,83
Иссык-Кульская / Issyk-Kul	63,33	60,56	61,67	60,00	60,00
Нарынская / Naryn	59,00	63,00	63,00	63,00	63,00
Ошская / Osh	89,48	96,35	94,06	97,50	97,50
Таласская / Talas	60,00	56,46	56,50	56,50	56,38
Чуйская / Chui	61,53	65,09	65,87	65,50	65,09
г.Бишкек/ Bishkek city	61,38	61,66	61,66	61,66	61,66
В среднем по республике / On the average by the country	66,55	67,67	67,18	67,90	67,93

Таблица 2: (продолжение)

Table 2: (continued)

Область /Oblast	I квартал / I quarter		2013		
	2012	2013	январь/ January	февраль/ February	март/ March
Сахар-песок / Granulated sugar					
Баткенская/ Batken	60,00	51,08	51,25	51,00	51,00
Джалал-Абадская / Djalal-Abad	55,31	50,00	50,00	50,00	50,00
Иссык-Кульская / Issyk-Kul	49,11	49,78	51,00	49,17	49,17
Нарынская / Naryn	51,40	49,03	49,60	49,60	47,90
Ошская / Osh	54,06	51,21	51,13	51,25	51,25
Таласская / Talas	50,43	51,11	51,29	51,29	50,75
Чуйская / Chui	47,98	46,29	46,60	46,23	46,29
г.Бишкек/ Bishkek city	50,65	46,74	47,13	47,00	46,10
В среднем по республике / On the average by the country	51,52	48,04	48,35	48,16	47,59
Лук / Onions					
Баткенская/ Batken	17,79	17,96	16,75	19,38	17,75
Джалал-Абадская / Djalal-Abad	16,50	19,65	20,00	19,88	19,08
Иссык-Кульская / Issyk-Kul	17,25	15,83	17,50	15,00	15,00
Нарынская / Naryn	15,23	19,92	18,31	20,19	21,25
Ошская / Osh	15,83	19,44	19,33	19,67	19,33
Таласская / Talas	16,00	18,25	20,00	18,75	16,00
Чуйская / Chui	15,44	18,96	19,02	19,63	18,96
г.Бишкек/ Bishkek city	17,37	22,14	22,72	22,63	21,08
В среднем по республике / On the average by the country	16,92	20,73	21,12	21,14	19,93
Хлопковое масло / Cotton oil					
Баткенская/ Batken	94,17	81,17	80,50	81,00	82,00
Джалал-Абадская / Djalal-Abad	103,31	102,25	105,04	101,45	100,25
Иссык-Кульская / Issyk-Kul	110,49	109,86	111,30	109,13	109,13
Нарынская / Naryn	97,69	0,00	-	-	0,00
Ошская / Osh	115,63	104,42	103,64	103,64	105,98
Таласская / Talas	95,47	93,26	93,26	93,26	93,26
Чуйская / Chui	103,45	100,82	100,96	100,96	100,82
г.Бишкек/ Bishkek city	110,18	106,55	106,55	106,55	106,55
В среднем по республике / On the average by the country	109,00	104,41	104,59	104,20	104,45
Баранина / Mutton					
Баткенская/ Batken	300,00	300,00	300,00	300,00	300,00
Джалал-Абадская / Djalal-Abad	300,00	296,25	290,00	298,75	300,00
Иссык-Кульская / Issyk-Kul	258,65	263,23	264,06	262,81	262,81
Нарынская / Naryn	297,25	274,83	265,75	271,25	287,50
Ошская / Osh	300,00	292,50	290,00	290,00	297,50
Таласская / Talas	282,17	266,83	262,00	265,00	273,50
Чуйская / Chui	261,04	264,94	265,58	264,54	264,94
г.Бишкек/ Bishkek city	296,18	286,41	285,00	285,56	288,68
В среднем по республике / On the average by the country	292,48	285,42	283,65	284,64	287,96

Таблица 2: (продолжение)

Table 2: (continued)

Область /Oblast	I квартал / I quarter		2013		
	2012	2013	январь/ January	февраль/ February	март/ March
Говядина / Beef					
Баткенская/ Batken	260,00	280,00	280,00	280,00	280,00
Джалал-Абадская / Djalal-Abad	290,00	283,27	280,00	286,25	283,57
Иссык-Кульская / Issyk-Kul	275,21	267,29	268,13	266,25	267,50
Нарынская / Naryn	301,67	300,00	300,00	300,00	300,00
Ошская / Osh	280,00	280,00	280,00	280,00	280,00
Таласская / Talas	293,83	274,83	274,00	274,00	276,50
Чуйская / Chui	310,92	278,08	278,80	277,82	278,08
г.Бишкек/ Bishkek city	323,43	299,01	300,19	298,64	298,19
В среднем по республике / On the average by the country	308,98	290,71	291,22	290,65	290,25
Конина / Horsemeat					
Баткенская/ Batken	-	-	-	-	-
Джалал-Абадская / Djalal-Abad	300,00	290,42	290,00	291,25	290,00
Иссык-Кульская / Issyk-Kul	269,17	258,33	258,75	260,00	256,25
Нарынская / Naryn	301,67	304,17	300,00	300,00	312,50
Ошская / Osh	-	-	-	-	-
Таласская / Talas	346,67	330,00	330,00	330,00	330,00
Чуйская / Chui	338,33	197,75	186,12	203,57	197,75
г.Бишкек/ Bishkek city	350,42	320,00	327,50	318,00	314,50
В среднем по республике / On the average by the country	339,45	313,73	318,11	312,92	310,16
Свинина / Pork					
Баткенская/ Batken	-	-	-	-	-
Джалал-Абадская / Djalal-Abad	-	-	-	-	-
Иссык-Кульская / Issyk-Kul	223,33	264,17	252,50	270,00	270,00
Нарынская / Naryn	-	-	-	-	-
Ошская / Osh	306,25	291,25	285,00	288,75	300,00
Таласская / Talas	200,00	213,33	213,33	213,33	213,33
Чуйская / Chui	228,06	268,22	268,04	268,83	268,22
г.Бишкек/ Bishkek city	253,33	296,25	290,00	297,08	301,67
В среднем по республике / On the average by the country	256,90	289,89	283,91	290,45	295,31
Куры / Chicken					
Баткенская/ Batken	202,92	205,00	205,00	205,00	205,00
Джалал-Абадская / Djalal-Abad	381,67	280,56	350,00	255,00	236,67
Иссык-Кульская / Issyk-Kul	200,00	254,44	260,00	253,33	250,00
Нарынская / Naryn	175,69	180,00	180,00	180,00	180,00
Ошская / Osh	246,11	314,58	300,00	308,75	335,00
Таласская / Talas	239,91	230,00	230,00	230,00	230,00
Чуйская / Chui	206,80	275,75	277,84	276,39	275,75
г.Бишкек/ Bishkek city	313,06	283,82	283,33	283,96	284,17
В среднем по республике / On the average by the country	288,85	280,46	284,13	277,64	279,62
Яйца / Eggs (10 pieces)					
Баткенская/ Batken	100,00	95,21	92,50	96,25	96,88
Джалал-Абадская / Djalal-Abad	73,60	83,21	85,71	82,50	81,43
Иссык-Кульская / Issyk-Kul	77,33	77,50	82,75	77,50	72,25
Нарынская / Naryn	83,75	94,69	95,00	95,00	94,06
Ошская / Osh	68,61	69,58	70,83	70,83	67,08
Таласская / Talas	87,71	83,89	88,75	84,58	78,33
Чуйская / Chui	75,00	75,68	81,28	74,15	75,68
г.Бишкек/ Bishkek city	71,63	72,52	73,67	73,97	69,93
В среднем по республике / On the average by the country	73,28	74,84	76,53	75,75	72,24

Продовольственный баланс
по базовым продуктам питания ¹

Таблица 3.

Table 3. Food balance
by basic foodstuffs

Базовые продукты питания / Basic foodstuffs	Хлебопродукты/ Bread and bread products			Пшеница и продукты ее переработки/Wheat and wheat processed products			Картофель / Potatoes			Овощи и бахчевые / Vegetables and melons			Фрукты и ягоды / Fruits and berries		
	в пересчете на зерно, тыс. тонн /expressed in grain, thsd. tons			в пересчете на зерно, тыс. тонн /expressed in grain, thsd. tons			свежий, тыс. тонн / fresh, thsd. tons			свежий, тыс. тонн / fresh, thsd. tons			свежий, тыс. тонн / fresh, thsd. tons		
	2012	I кв. 2012 / 1st quarter 2012	I кв. 2013 / 1st quarter 2013	2012	I кв. 2012 / 1st quarter 2012	I кв. 2013 / 1st quarter 2013	2012	I кв. 2012 / 1st quarter 2012	I кв. 2013 / 1st quarter 2013	2012	I кв. 2012 / 1st quarter 2012	I кв. 2013 / 1st quarter 2013	2012	I кв. 2012 / 1st quarter 2012	I кв. 2013 / 1st quarter 2013
1. Запасы на начало года / Opening stocks	1295,6	1295,6	1182,9	844,7	844,7	698,9	733,4	733,4	728,1	242,3	242,3	279,7	20,6	20,6	22,7
2. Произведено продовольствия в стране (+) / Food production in the country	1438,3	-	-	540,5	-	-	1312,7	-	-	1059,2	11,4	12,4	222,7	-	-
3. Импортировано прод. товаров (+) / Food import	681,9	195,3	135,1	619,4	176,7	126,4	0,2	0,1	0,0	6,4	2,0	2,7	41,6	9,1	10,0
Поступление (1-3) (+) Availability	3415,8	1490,9	1318,0	2004,6	1021,4	825,3	2046,3	733,5	728,1	1307,9	255,7	294,8	284,9	29,7	32,7
4. Расходы на семена (-) / Expenses for seeds	142,5	0,6	62,2	88,8	0,2	29,7	285,5	1,8	160,2	0,0	0,0	0,0	-	-	-
5. На корм скоту (-) / Fodder	925,0	285,0	291,8	279,3	67,5	54,5	205,9	63,2	64,8	84,8	18,9	27,5	5,0	1,1	1,1
6. Потери (-) / Losses	59,2	27,3	24,1	18,0	4,9	4,0	61,3	21,9	21,7	16,1	1,9	2,2	6,5	1,3	1,4
7. Экспортировано прод. товаров (-) / Food export	96,6	15,0	12,5	16,3	0,5	0,4	235,0	26,6	12,6	117,0	24,8	22,9	94,4	11,7	15,2
8. Наличие для потребления населением (-) / Availablity for consumption by population	1009,6	256,1	261,8	903,3	226,1	230,9	530,5	133,3	136,6	810,3	118,3	120,3	156,3	15,1	14,4
Использование Consumption	2232,9	584,0	652,4	1305,7	299,2	319,5	1318,2	246,8	395,9	1028,2	163,9	172,9	262,2	29,2	32,1
10. Запасы на конец периода / Closing stocks	1182,9	906,9	665,6	698,9	722,2	505,8	728,1	486,7	332,2	279,7	91,8	121,9	22,7	0,5	0,6

¹ Предварительные данные/Preliminary data

² С учетом неучтенного экспорта/Including unaccounted export

Таблица 3.(продолжение)

Table 3. (continued)

Базовые продукты питания / Basic foodstuffs	Мясо и мясопродукты / Meat and meat products			Молоко и молочные продукты / Milk and dairy products			Яйца / Eggs			Жиры растительные / Vegetable oil/fats			Сахар и кондитерские изделия / Sugar and confectionery		
	в пересчете на убойный вес, тыс.тонн /expressed in slaughter weight, thsd. tons			в пересчете на молоко, тыс. тонн / expressed in milk, thsd. tons			миллионов штук / million pieces			тыс. тонн / thsd. tons			в пересчете на сахар, тыс. тонн/expressed in sugar, thsd. tons		
	2012	I кв. 2012 / 1st quarter 2012	I кв. 2013 / 1st quarter 2013	2012	I кв. 2012 / 1st quarter 2012	I кв. 2013 / 1st quarter 2013	2012	I кв. 2012 / 1st quarter 2012	I кв. 2013 / 1st quarter 2013	2012	I кв. 2012 / 1st quarter 2012	I кв. 2013 / 1st quarter 2013	2012	I кв. 2012 / 1st quarter 2012	I кв. 2013 / 1st quarter 2013
1. Запасы на начало года / Opening stocks	4,8	4,8	4,8	39,5	39,5	59,1	36,3	36,3	22,2	26,4	26,4	9,3	10,4	10,4	5,6
2. Произведено продовольствия в стране (+) / Food production in the country	193,7	43,8	44,6	1382,4	226,2	230,2	387,2	76,4	83,8	0,6	4,2	4,6	13,3	0,0	9,0
3. Импортировано прод. товаров (+) / Food import	82,6	19,5	10,6	22,3	4,0	4,2	41,4	2,2	4,1	40,1	9,5	8,9	89,8	20,5	16,0
Поступление (1-3) (+) Availability	281,1	68,1	60,0	1444,2	269,7	293,5	464,9	114,9	110,1	67,1	40,1	22,8	113,5	30,9	30,6
4. Расходы на семена (-) / Expenses for seeds	-	-	-	-	-	-	8,5	1,7	1,8	-	-	-	-	-	-
5. На корм скоту (-) / Fodder	0,0	0,0	0,0	113,4	45,9	49,4	1,4	0,0	0,0	-	-	-	-	-	-
6. Потери (-) / Losses	0,3	0,1	0,1	1,7	0,3	0,3	0,0	0,0	0,0	0,0	0,0	0,0	0,1	0,0	0,0
7. Экспортировано прод. товаров (-) / Food export	71,6 ²	0,2	0,1	120,1 ²	12,0	0,0	0,2	0,0	-	0,0	0,0	0,0	0,7	0,2	0,1
8. Наличие для потребления населением (-) / Availablity for consumption by population	204,4	54,6	53,7	1149,9	195,8	201,6	432,6	99,5	100,8	57,8	15,9	16,3	107,1	23,7	24,4
Использование Consumption	276,3	54,9	53,9	1385,1	254,0	251,3	442,7	101,2	102,6	57,8	15,9	16,3	107,9	23,9	24,5
10. Запасы на конец периода / Closing stocks	4,8	13,2	6,1	59,1	15,7	42,2	22,2	13,7	7,5	9,3	24,2	6,5	5,6	7,0	6,1

¹ Предварительные данные/Preliminary data² С учетом неучтенного экспорта/Including unaccounted export

**Таблица 4: Баланс питания в виде энергетической ценности по результатам обследований
ежедневного потребления и оценки ежедневных потребностей**
(все население по демографическим группам и регионам)

**Table 4: Food Balance expressed in nutritional value and compared to calculated daily needs based on surveys of daily intake
and on calculated daily needs based on recurrent nutritional surveillance**
(total population by demographic groups and by regions)

	Население, человек		Ккал в день на душу населения		Белки в день на душу населения, грамм		Жиры в день на душу населения, грамм		
	Number, people		C/Calories C/d/p		Proteins g/d/p		Fats g/d/p		
	9 месяцев / 9 months		9 месяцев / 9 months		9 месяцев / 9 months		9 месяцев / 9 months		
	2011	2012	2011	2012	2011	2012	2011	2012	
Все население	5 477 620	5 551 888							Total population
Баткенская область	441 101	448 849	2 299	2 164	56,5	52,9	68,7	67,7	Batken oblast
Джалал-Абадская область	1 036 644	1 054 226	2 248	1 864	59,1	50,4	54,6	41,8	Djalal-Abad oblast
Иссык-Кульская область	444 520	448 003	2 341	2 478	61,5	66,2	63,8	68,7	Issyk-Kul oblast
Нарынская область	262 137	264 947	2 060	2 106	58,4	62,4	48,5	49,5	Naryn oblast
Ошская область	1 386 734	1 403 598	2 157	2 104	55,8	55,1	57,5	56,8	Osh oblast
Таласская область	231 819	235 327	2 413	2 167	63,6	59,6	58,0	56,6	Talas oblast
Чуйская область	814 870	822 581	2 434	2 634	64,7	72,7	68,0	72,3	Chui oblast
г.Бишкек	859 795	874 357	2 233	2 021	61,6	55,8	62,5	57,1	Bishkek city
Суточное потребление			2 305	2 162	61,0	58,2	61,9	57,8	Daily intake
Суточные потребности			2 101	2 101	73,0	73,0	71,0	71,0	Daily needs
Баланс: (+) или (-)			204	61	-12	-15	-9	-13	Balance: (+) or (-)

Таблица 4: (продолжение)

Table 4: (continued)

	Население, человек		Ккал в день на душу населения		Белки в день на душу населения, грамм		Жиры в день на душу населения, грамм		
	Number, people		C/Calories C/d/p		Proteins g/d/p		Fats g/d/p		
	9 месяцев / 9 months		9 месяцев / 9 months		9 месяцев / 9 months		9 месяцев / 9 months		
	2011	2012	2011	2012	2011	2012	2011	2012	
Население пенсионного возраста	598 542	619 569							Pensioners
Баткенская область	44 625	43 939	2 575	2 339	65,2	58,5	78,6	75,2	Batken oblast
Джалал-Абадская область	108 512	106 663	2 427	2 035	64,3	55,8	61,1	46,5	Djalal-Abad oblast
Иссык-Кульская область	52 338	58 893	2 748	2 750	72,8	74,3	79,1	79,1	Issyk-Kul oblast
Нарынская область	28 637	27 381	2 185	2 317	65,4	70,9	55,3	59,0	Naryn oblast
Ошская область	123 271	128 611	2 414	2 361	63,2	62,9	67,0	65,6	Osh oblast
Таласская область	22 356	23 472	2 709	2 436	72,3	68,2	68,7	66,4	Talas oblast
Чуйская область	111 512	118 760	2 921	3 229	80,4	92,2	89,7	95,9	Chui oblast
г.Бишкек	107 291	111 850	2 703	2 492	77,2	71,0	82,0	76,7	Bishkek city
Суточное потребление			2 604	2 531	70,5	70,1	74,3	71,8	Daily intake
Суточные потребности			2 101	2 101	72,0	72,0	73,0	73,0	Daily needs
Баланс: (+) или (-)			503	430	-1	-2	1	-1	Balance: (+) or (-)

Таблица 4: (продолжение)

Table 4: (continued)

	Население, человек		Ккал в день на душу населения		Белки в день на душу населения, грамм		Жиры в день на душу населения, грамм		
	Number, people		C/Calories C/d/p		Proteins g/d/p		Fats g/d/p		
	9 месяцев / 9 months		9 месяцев / 9 months		9 месяцев / 9 months		9 месяцев / 9 months		
	2011	2012	2011	2012	2011	2012	2011	2012	
Население трудоспособного возраста	2 816 171	2 844 616							Working age population
Баткенская область	218 470	222 151	2 565	2 414	62,9	59,3	76,5	75,2	Batken oblast
Джалал-Абадская область	531 247	551 308	2 457	2 019	64,5	54,5	59,9	45,4	Djalal-Abad oblast
Иссык-Кульская область	229 192	223 100	2 585	2 744	68,0	73,7	70,3	75,8	Issyk-Kul oblast
Нарынская область	119 699	122 333	2 331	2 383	66,0	69,9	55,2	55,9	Naryn oblast
Ошская область	666 388	673 018	2 364	2 313	61,6	60,7	62,7	62,2	Osh oblast
Таласская область	112 751	114 442	2 734	2 430	72,0	66,7	65,9	63,4	Talas oblast
Чуйская область	449 324	443 290	2 597	2 810	68,7	77,3	71,7	76,3	Chui oblast
г.Бишкек	489 100	494 973	2 392	2 166	65,7	59,7	66,7	60,8	Bishkek city
Суточное потребление			2 470	2 357	65,2	63,4	65,8	62,8	Daily intake
Суточные потребности			2 212	2 212	76,0	76,0	74,0	74,0	Daily needs
Баланс: (+) или (-)			258	145	-11	-13	-8	-11	Balance: (+) or (-)

Таблица 4: (продолжение)

Table 4: (continued)

	Население, человек		Ккал в день на душу населения		Белки в день на душу населения, грамм		Жиры в день на душу населения, грамм		
	Number, people		C/Calories C/d/p		Proteins g/d/p		Fats g/d/p		
	9 месяцев / 9 months		9 месяцев / 9 months		9 месяцев / 9 months		9 месяцев / 9 months		
	2011	2012	2011	2012	2011	2012	2011	2012	
Дети 1-17	1 961 485	1 994 379							Children aged 1-17 years
Баткенская область	161 752	170 663	2 095	1 947	51,2	47,0	62,5	60,9	Batken oblast
Джалал-Абадская область	381 934	375 276	1 995	1 693	52,3	45,8	47,6	37,5	Djalal-Abad oblast
Иссык-Кульская область	157 374	158 908	1 935	2 113	50,5	55,6	51,5	57,8	Issyk-Kul oblast
Нарынская область	107 589	107 351	1 845	1 892	51,6	56,3	42,0	43,4	Naryn oblast
Ошская область	564 655	574 994	1 980	1 900	50,5	49,3	52,5	51,1	Osh oblast
Таласская область	94 248	93 086	2 021	1 875	53,1	51,4	47,5	48,3	Talas oblast
Чуйская область	245 895	256 301	1 997	2 098	52,3	57,1	53,5	55,8	Chui oblast
г.Бишкек	248 038	257 798	1 854	1 614	50,6	43,8	49,5	43,7	Bishkek city
Суточное потребление			1 970	1 869	51,3	49,7	51,2	49,0	Daily intake
Суточные потребности			1 920	1 920	69,0	69,0	66,0	66,0	Daily needs
Баланс: (+) или (-)			50	-51	-18	-19	-15	-17	Balance: (+) or (-)

Таблица 4: (продолжение)

Table 4: (continued)

	Население, человек		Ккал в день на душу населения		Белки в день на душу населения, грамм		Жиры в день на душу населения, грамм		
	Number, people		C/Calories C/d/p		Proteins g/d/p		Fats g/d/p		
	9 месяцев / 9 months		9 месяцев / 9 months		9 месяцев / 9 months		9 месяцев / 9 months		
	2011	2012	2011	2012	2011	2012	2011	2012	
Дети 1-3 лет	305 943	337 268							Children aged 1-3 years
Баткенская область	27 516	38 601	1 504	1 350	37,7	33,2	45,1	43,0	Batken oblast
Джалал-Абадская область	56 419	55 792	1 229	1 095	31,7	29,8	28,9	24,5	Djalal-Abad oblast
Иссык-Кульская область	29 827	29 545	1 290	1 363	34,4	36,3	32,8	34,7	Issyk-Kul oblast
Нарынская область	19 419	20 544	1 243	1 332	35,5	39,2	29,5	30,5	Naryn oblast
Ошская область	84 643	103 063	1 315	1 262	34,0	33,2	34,0	33,4	Osh oblast
Талаская область	17 345	15 465	1 368	1 247	36,0	34,5	32,8	32,7	Talas oblast
Чуйская область	32 087	29 078	1 311	1 443	35,3	40,7	34,6	37,4	Chui oblast
г.Бишкек	38 687	45 180	1 292	1 146	35,8	31,4	34,4	31,1	Bishkek city
Суточное потребление			1 309	1 257	34,5	33,7	33,7	33,0	Daily intake
Суточные потребности			1 661	1 661	62,0	62,0	59,0	59,0	Daily needs
Баланс: (+) или (-)			-352	-404	-27	-28	-25	-26	Balance: (+) or (-)

Таблица 4: (продолжение)

Table 4: (continued)

	Население, человек		Ккал в день на душу населения		Белки в день на душу населения, грамм		Жиры в день на душу населения, грамм		
	Number, people		C/Calories C/d/p		Proteins g/d/p		Fats g/d/p		
	9 месяцев / 9 months		9 месяцев / 9 months		9 месяцев / 9 months		9 месяцев / 9 months		
	2011	2012	2011	2012	2011	2012	2011	2012	
Дети 4-6 лет	303 237	325 006							Children aged 4-6 years
Баткенская область	26 562	24 607	1 772	1 682	43,7	41,6	52,9	52,7	Batken oblast
Джалал-Абадская область	53 793	56 778	1 719	1 415	45,2	38,4	42,0	30,5	Djalal-Abad oblast
Иссык-Кульская область	25 611	30 105	1 660	1 760	42,9	46,9	44,4	46,4	Issyk-Kul oblast
Нарынская область	17 712	18 859	1 546	1 675	41,6	49,6	33,7	37,4	Naryn oblast
Ошская область	68 714	75 649	1 682	1 653	43,6	43,0	42,7	42,9	Osh oblast
Таласская область	16 477	15 179	1 685	1 657	44,4	45,3	39,6	43,8	Talas oblast
Чуйская область	49 471	58 696	1 666	1 722	43,5	46,7	44,5	45,4	Chui oblast
г.Бишкек	44 898	45 133	1 641	1 446	44,5	39,4	44,6	38,4	Bishkek city
Суточное потребление			1 678	1 609	43,9	43,1	43,5	41,4	Daily intake
Суточные потребности			1 661	1 661	62,0	62,0	59,0	59,0	Daily needs
Баланс: (+) или (-)			17	-52	-18	-19	-16	-18	Balance: (+) or (-)

Таблица 4: (продолжение)

Table 4: (continued)

	Население, человек		Ккал в день на душу населения		Белки в день на душу населения, грамм		Жиры в день на душу населения, грамм		
	Number, people		C/Calories C/d/p		Proteins g/d/p		Fats g/d/p		
	9 месяцев / 9 months		9 месяцев / 9 months		9 месяцев / 9 months		9 месяцев / 9 months		
	2011	2012	2011	2012	2011	2012	2011	2012	
Дети 7-13 лет	797 600	803 689							Children aged 7-13 years
Баткенская область	66 370	62 912	2 193	2 106	53,0	50,7	64,9	65,2	Batken oblast
Джалал-Абадская область	157 274	158 975	2 085	1 829	54,4	49,5	49,2	40,7	Djalal-Abad oblast
Иссык-Кульская область	61 141	55 320	2 098	2 266	54,7	59,2	56,0	63,8	Issyk-Kul oblast
Нарынская область	44 005	41 140	1 983	2 022	55,4	60,2	45,0	46,5	Naryn oblast
Ошская область	235 786	238 931	2 052	2 019	52,4	52,8	54,1	53,9	Osh oblast
Таласская область	35 962	40 217	2 187	1 989	57,6	54,6	51,0	50,4	Talas oblast
Чуйская область	96 258	99 864	2 178	2 270	57,9	62,0	58,3	60,4	Chui oblast
г.Бишкек	100 804	106 329	1 929	1 686	52,2	45,5	52,1	46,1	Bishkek city
Суточное потребление			2 076	1 991	54,1	53,1	53,8	52,1	Daily intake
Суточные потребности			2 031	2 031	73,0	73,0	70,0	70,0	Daily needs
Баланс: (+) или (-)			45	-40	-19	-20	-16	-18	Balance: (+) or (-)

Таблица 4: (продолжение)

Table 4: (continued)

	Население, человек		Ккал в день на душу населения		Белки в день на душу населения, грамм		Жиры в день на душу населения, грамм		
	Number, people		C/Calories C/d/p		Proteins g/d/p		Fats g/d/p		
	9 месяцев / 9 months		9 месяцев / 9 months		9 месяцев / 9 months		9 месяцев / 9 months		
	2011	2012	2011	2012	2011	2012	2011	2012	
Дети 14-17 лет	554 705	528 416							Children aged 14-17 years
Баткенская область	41 303	44 543	2 539	2 385	62,1	56,6	76,3	74,7	Batken oblast
Джалал-Абадская область	114 447	103 731	2 378	1 957	62,9	52,8	57,3	43,6	Djalal-Abad oblast
Иссык-Кульская область	40 795	43 938	2 335	2 667	61,0	69,9	62,8	73,8	Issyk-Kul oblast
Нарынская область	26 453	26 809	2 258	2 273	63,7	68,3	51,9	52,9	Naryn oblast
Ошская область	175 512	157 351	2 320	2 255	58,6	57,5	62,9	62,3	Osh oblast
Таласская область	24 464	22 225	2 466	2 256	64,5	61,7	58,3	58,5	Talas oblast
Чуйская область	68 079	68 663	2 306	2 448	58,9	65,7	62,1	65,8	Chui oblast
г.Бишкек	63 649	61 156	2 226	1 958	61,1	53,1	57,9	52,8	Bishkek city
Суточное потребление			2 341	2 233	60,7	58,8	61,3	59,4	Daily intake
Суточные потребности			2 244	2 244	78,0	78,0	74,0	74,0	Daily needs
Баланс: (+) или (-)			97	-11	-17	-19	-13	-15	Balance: (+) or (-)

**Таблица 5: Баланс питания в виде энергетической ценности по результатам обследований
ежедневного потребления и оценки ежедневных потребностей**

(все население по квинтильным группам и регионам)

**Table 5: Food Balance expressed in nutritional value and compared to calculated daily needs, based on surveys of daily intake
and on calculated daily needs based on recurrent nutritional surveillance**

(total population by quintile groups and by regions)

	Население, человек		Ккал в день на душу населения		Белки в день на душу населения, грамм		Жиры в день на душу населения, грамм		
	Number, people		C/Calories C/d/p		Proteins g/d/p		Fats g/d/p		
	9 месяцев / 9 months		9 месяцев / 9 months		9 месяцев / 9 months		9 месяцев / 9 months		
	2011	2012	2011	2012	2011	2012	2011	2012	
Первая квинтиль	1 095 392	1 111 491							First quintile
Баткенская область	111 470	112 721	2 058	1 998	49,6	50,3	58,8	58,8	Batken oblast
Джалал-Абадская область	284 985	423 285	2 021	1 548	53,7	41,2	49,3	32,2	Djalal-Abad oblast
Иссык-Кульская область	117 918	80 066	1 812	1 919	45,2	48,8	49,7	54,8	Issyk-Kul oblast
Нарынская область	92 100	94 069	1 865	1 983	49,9	61,0	39,0	43,9	Naryn oblast
Ошская область	215 956	169 758	1 916	1 643	48,4	44,7	48,1	40,5	Osh oblast
Таласская область	92 694	117 263	1 930	1 685	49,8	46,6	43,8	41,1	Talas oblast
Чуйская область	165 749	101 345	1 896	2 050	48,3	54,5	47,0	49,7	Chui oblast
г.Бишкек	14 520	12 985	1 602	1 492	43,3	39,9	40,2	38,1	Bishkek city
Суточное потребление			1 936	1 731	49,7	46,7	48,3	41,4	Daily intake
Суточные потребности			2 101	2 101	73,0	73,0	71,0	71,0	Daily needs
Баланс: (+) или (-)			-165	-370	-23	-26	-23	-30	Balance: (+) or (-)

Таблица 5: (продолжение)

Table 5: (continued)

	Население, человек		Ккал в день на душу населения		Белки в день на душу населения, грамм		Жиры в день на душу населения, грамм		
	Number, people		C/Calories C/d/p		Proteins g/d/p		Fats g/d/p		
	9 месяцев / 9 months		9 месяцев / 9 months		9 месяцев / 9 months		9 месяцев / 9 months		
	2011	2012	2011	2012	2011	2012	2011	2012	
Вторая квинтиль	1 094 691	1 107 586							Second quintile
Баткенская область	108 943	124 133	2 093	2 004	50,5	49,7	63,3	62,4	Batken oblast
Джалал-Абадская область	282 791	241 813	2 168	1 826	56,9	49,0	49,6	39,5	Djalal-Abad oblast
Иссык-Кульская область	78 432	115 301	2 109	2 099	55,4	55,7	53,9	55,2	Issyk-Kul oblast
Нарынская область	43 257	39 642	1 968	2 021	56,3	58,3	44,8	46,7	Naryn oblast
Ошская область	322 925	322 654	1 900	1 993	49,2	50,9	49,4	51,5	Osh oblast
Таласская область	60 889	49 273	2 278	2 274	60,1	61,3	54,5	58,9	Talas oblast
Чуйская область	109 244	93 332	2 227	2 304	57,8	61,4	59,5	57,8	Chui oblast
г.Бишкек	88 208	121 439	1 770	1 535	46,2	40,7	46,1	40,9	Bishkek city
Суточное потребление			2 049	1 958	53,3	51,4	52,0	50,0	Daily intake
Суточные потребности			2 101	2 101	73,0	73,0	71,0	71,0	Daily needs
Баланс: (+) или (-)			-52	-143	-20	-22	-19	-21	Balance: (+) or (-)

Таблица 5: (продолжение)

Table 5: (continued)

	Население, человек		Ккал в день на душу населения		Белки в день на душу населения, грамм		Жиры в день на душу населения, грамм		
	Number, people		C/Calories C/d/p		Proteins g/d/p		Fats g/d/p		
	9 месяцев / 9 months		9 месяцев / 9 months		9 месяцев / 9 months		9 месяцев / 9 months		
	2011	2012	2011	2012	2011	2012	2011	2012	
Третья квинтиль	1 098 374	1 101 962							Third quintile
Баткенская область	84 872	78 778	2 308	2 108	56,3	49,4	70,0	68,9	Batken oblast
Джалал-Абадская область	243 739	187 685	2 190	2 064	56,7	57,1	53,8	46,3	Djalal-Abad oblast
Иссык-Кульская область	89 695	57 134	2 360	2 350	63,9	63,2	65,7	65,2	Issyk-Kul oblast
Нарынская область	46 702	23 760	2 095	2 098	59,9	59,6	49,7	50,6	Naryn oblast
Ошская область	280 031	381 032	2 252	2 010	57,3	52,3	60,9	54,5	Osh oblast
Таласская область	28 693	30 131	2 858	2 632	74,6	73,2	71,2	71,2	Talas oblast
Чуйская область	176 206	129 033	2 222	2 478	59,6	67,6	58,3	62,9	Chui oblast
г.Бишкек	148 437	214 409	1 898	1 640	52,3	44,9	48,4	42,7	Bishkek city
Суточное потребление			2 208	2 046	57,9	54,6	58,1	53,7	Daily intake
Суточные потребности			2 101	2 101	73,0	73,0	71,0	71,0	Daily needs
Баланс: (+) или (-)			107	-55	-15	-18	-13	-17	Balance: (+)or (-)

Таблица 5: (продолжение)

Table 5: (continued)

	Население, человек		Ккал в день на душу населения		Белки в день на душу населения, грамм		Жиры в день на душу населения, грамм		
	Number, people		C/Calories C/d/p		Proteins g/d/p		Fats g/d/p		
	9 месяцев / 9 months		9 месяцев / 9 months		9 месяцев / 9 months		9 месяцев / 9 months		
	2011	2012	2011	2012	2011	2012	2011	2012	
Четвертая квинтиль	1 093 788	1 121 169							Fourth quintile
Баткенская область	68 128	67 717	2 321	2 284	58,3	55,6	69,2	73,3	Batken oblast
Джалал-Абадская область	155 337	153 146	2 539	2 286	66,6	63,8	63,0	56,8	Djalal-Abad oblast
Иссык-Кульская область	87 521	97 794	2 454	2 700	64,4	73,1	66,9	77,6	Issyk-Kul oblast
Нарынская область	49 329	53 549	2 223	2 051	67,8	60,9	58,0	48,4	Naryn oblast
Ошская область	302 168	287 069	2 240	2 177	60,8	58,2	58,9	60,3	Osh oblast
Таласская область	27 601	22 476	2 810	3 301	75,2	90,7	68,1	95,6	Talas oblast
Чуйская область	142 986	186 092	2 591	2 630	68,8	73,3	70,6	65,5	Chui oblast
г.Бишкек	260 718	253 326	2 126	1 862	58,1	51,0	56,8	51,0	Bishkek city
Суточное потребление			2 337	2 264	62,8	61,8	62,0	61,0	Daily intake
Суточные потребности			2 101	2 101	73,0	73,0	71,0	71,0	Daily needs
Баланс: (+) или (-)			236	163	-10	-11	-9	-10	Balance: (+) or (-)

Таблица 5: (продолжение)

Table 5: (continued)

	Население, человек		Ккал в день на душу населения		Белки в день на душу населения, грамм		Жиры в день на душу населения, грамм		
	Number, people		C/Calories C/d/p		Proteins g/d/p		Fats g/d/p		
	9 месяцев / 9 months		9 месяцев / 9 months		9 месяцев / 9 months		9 месяцев / 9 months		
	2011	2012	2011	2012	2011	2012	2011	2012	
Пятая квинтиль	1 095 375	1 109 680							Fifth quintile
Баткенская область	67 688	65 501	2 993	2 694	76,0	65,0	91,9	85,8	Batken oblast
Джалал-Абадская область	69 792	48 297	3 058	2 718	81,1	70,3	81,1	72,7	Djalal-Abad oblast
Иссык-Кульская область	70 954	97 709	3 315	3 234	88,8	87,5	91,8	89,0	Issyk-Kul oblast
Нарынская область	30 749	53 927	2 462	2 441	69,8	70,6	65,1	62,0	Naryn oblast
Ошская область	265 653	243 085	2 470	2 633	62,5	68,2	69,7	74,6	Osh oblast
Таласская область	21 942	16 184	3 744	2 891	102,2	80,3	98,0	79,9	Talas oblast
Чуйская область	220 685	312 779	3 010	2 990	81,7	83,8	93,9	92,0	Chui oblast
г.Бишкек	347 912	272 197	2 599	2 709	72,9	76,2	77,8	82,3	Bishkek city
Суточное потребление			2 770	2 807	74,4	76,5	81,1	82,7	Daily intake
Суточные потребности			2 101	2 101	73,0	73,0	71,0	71,0	Daily needs
Баланс: (+) или (-)			669	706	1	3	10	12	Balance: (+) or (-)

Таблица 6: Продовольственный баланс домохозяйств в стоимостном выражении по результатам обследований уровня жизни

(все население по доходным квинтильным группам и регионам, сомов)

Table 6: Household Food Balance expressed in value terms based on results of surveys of living standard

(total population by income quintile groups and by regions, som)

	Население, человек		Среднедушевые доходы, сом/чел/месяц		Среднедушевые расходы на питание, сом/чел/месяц		Баланс, %		
	Number, people		Average per capita available income, s/ps/month		Average per capita food expenditure, s/ps/month		Balance, %		
	9 месяцев / 9 months		9 месяцев / 9 months		9 месяцев / 9 months		9 месяцев / 9 months		
	2011	2012	2011	2012	2011	2012	2011	2012	
Все население	5 477 620	5 551 888							Total population
Баткенская область	441 101	448 849	2 989	3 090	1 115	995	37,3	32,2	Batken oblast
Джалал-Абадская область	1 036 644	1 054 226	2 454	2 479	1 050	948	42,8	38,2	Djalal-Abad oblast
Иссык-Кульская область	444 520	448 003	2 698	3 132	1 311	1 276	48,6	40,8	Issyk-Kul oblast
Нарынская область	262 137	264 947	2 260	2 967	730	804	32,3	27,1	Naryn oblast
Ошская область	1 386 734	1 403 598	2 609	3 134	1 292	1 304	49,5	41,6	Osh oblast
Таласская область	231 819	235 327	2 187	2 570	975	792	44,6	30,8	Talas oblast
Чуйская область	814 870	822 581	2 925	3 726	1 414	1 532	48,3	41,1	Chui oblast
г.Бишкек	859 795	874 357	3 382	3 756	1 747	1 372	51,7	36,5	Bishkek city
Средневзвешенный баланс			2 751	3 160	1 283	1 208	46,6	38,2	Average weighted balance

Таблица 6: (продолжение)

Table 6: (continued)

	Население, человек		Среднедушевые доходы, сом/чел/месяц		Среднедушевые расходы на питание, сом/чел/месяц		Баланс, %		
	Number, people		Average per capita available income, s/ps/month		Average per capita food expenditure, s/ps/month		Balance, %		
	9 месяцев / 9 months		9 месяцев / 9 months		9 месяцев / 9 months		9 месяцев / 9 months		
	2011	2012	2011	2012	2011	2012	2011	2012	
Первая квинтиль	1 091 829	1 110 747							First quintile
Баткенская область	54 553	86 536	1 185	1 310	802	829	67,6	63,3	Batken oblast
Джалал-Абадская область	226 751	323 485	1 024	1 084	724	804	70,7	74,2	Djalal-Abad oblast
Иссык-Кульская область	142 396	134 562	922	1 046	905	906	98,1	86,7	Issyk-Kul oblast
Нарынская область	94 197	75 097	1 003	1 178	493	528	49,1	44,9	Naryn oblast
Ошская область	265 896	252 186	1 099	1 247	1 008	1 009	91,7	80,9	Osh oblast
Таласская область	79 538	72 129	958	1 076	715	522	74,6	48,5	Talas oblast
Чуйская область	164 745	87 366	935	1 257	1 043	850	111,5	67,7	Chui oblast
г. Бишкек	63 754	79 387	1 193	1 377	1 254	988	105,2	71,8	Bishkek city
Средневзвешенный баланс			1 027	1 174	879	845	85,6	71,9	Average weighted balance

Таблица 6: (продолжение)

Table 6: (continued)

	Население, человек		Среднедушевые доходы, сом/чел/месяц		Среднедушевые расходы на питание, сом/чел/месяц		Баланс, %		
	Number, people		Average per capita available income, s/ps/month		Average per capita food expenditure, s/ps/month		Balance, %		
	9 месяцев / 9 months		9 месяцев / 9 months		9 месяцев / 9 months		9 месяцев / 9 months		
	2011	2012	2011	2012	2011	2012	2011	2012	
Вторая квинтиль	1 094 950	1 111 374							Second quintile
Баткенская область	86 751	95 036	1 814	1 985	769	866	42,4	43,7	Batken oblast
Джалал-Абадская область	210 802	239 562	1 757	1 970	1 008	894	57,4	45,4	Djalal-Abad oblast
Иссык-Кульская область	81 444	82 344	1 746	1 974	1 156	1 082	66,2	54,8	Issyk-Kul oblast
Нарынская область	55 382	41 273	1 762	2 024	732	612	41,5	30,3	Naryn oblast
Ошская область	299 788	291 715	1 728	2 072	1 131	1 038	65,4	50,1	Osh oblast
Таласская область	49 175	54 806	1 735	1 979	804	658	46,3	33,2	Talas oblast
Чуйская область	149 302	149 534	1 724	1 980	1 069	1 163	62,0	58,7	Chui oblast
г. Бишкек	162 306	157 106	1 786	1 970	1 416	1 053	79,3	53,5	Bishkek city
Средневзвешенный баланс			1 752	2 002	1 079	980	61,6	49,0	Average weighted balance

Таблица 6: (продолжение)

Table 6: (continued)

	Население, человек		Среднедушевые доходы, сом/чел/месяц		Среднедушевые расходы на питание, сом/чел/месяц		Баланс, %		
	Number, people		Average per capita available income, s/ps/month		Average per capita food expenditure, s/ps/month		Balance, %		
	9 месяцев / 9 months		9 месяцев / 9 months		9 месяцев / 9 months		9 месяцев / 9 months		
	2011	2012	2011	2012	2011	2012	2011	2012	
Третья квинтиль	1 099 777	1 109 068							Third quintile
Баткенская область	99 829	118 854	2 310	2 646	974	887	42,2	33,5	Batken oblast
Джалал-Абадская область	255 519	186 621	2 359	2 722	1 004	940	42,6	34,5	Djalal-Abad oblast
Иссык-Кульская область	69 571	75 261	2 294	2 652	1 244	1 207	54,2	45,5	Issyk-Kul oblast
Нарынская область	30 477	54 016	2 361	2 667	815	790	34,5	29,6	Naryn oblast
Ошская область	341 652	313 311	2 329	2 657	1 324	1 278	56,9	48,1	Osh oblast
Таласская область	34 878	39 305	2 324	2 687	1 260	883	54,2	32,9	Talas oblast
Чуйская область	128 319	167 111	2 374	2 685	1 441	1 338	60,7	49,8	Chui oblast
г. Бишкек	139 531	154 589	2 400	2 636	1 495	1 132	62,3	43,0	Bishkek city
Средневзвешенный баланс			2 347	2 669	1 232	1 125	52,5	42,2	Average weighted balance

Таблица 6: (продолжение)

Table 6: (continued)

	Население, человек		Среднедушевые доходы, сом/чел/месяц		Среднедушевые расходы на питание, сом/чел/месяц		Баланс, %		
	Number, people		Average per capita available income, s/ps/month		Average per capita food expenditure, s/ps/month		Balance, %		
	9 месяцев / 9 months		9 месяцев / 9 months		9 месяцев / 9 months		9 месяцев / 9 months		
	2011	2012	2011	2012	2011	2012	2011	2012	
Четвертая квинтиль	1 096 785	1 110 641							Fourth quintile
Баткенская область	111 613	71 297	3 122	3 555	1 120	1 116	35,9	31,4	Batken oblast
Джалал-Абадская область	208 257	202 084	3 031	3 581	1 179	1 038	38,9	29,0	Djalal-Abad oblast
Иссык-Кульская область	61 653	60 270	3 229	3 598	1 457	1 473	45,1	40,9	Issyk-Kul oblast
Нарынская область	50 128	45 490	3 206	3 652	782	919	24,4	25,2	Naryn oblast
Ошская область	224 411	300 953	3 095	3 587	1 372	1 437	44,3	40,1	Osh oblast
Таласская область	45 338	35 922	3 114	3 533	1 160	980	37,3	27,7	Talas oblast
Чуйская область	193 349	172 677	3 139	3 606	1 431	1 567	45,6	43,4	Chui oblast
г.Бишкек	202 035	221 948	3 150	3 663	1 713	1 335	54,4	36,4	Bishkek city
Средневзвешенный баланс			3 117	3 603	1 352	1 309	43,4	36,3	Average weighted balance

Таблица 6: (продолжение)

Table 6: (continued)

	Население, человек		Среднедушевые доходы, сом/чел/месяц		Среднедушевые расходы на питание, сом/чел/месяц		Баланс, %		
	Number, people		Average per capita available income, s/ps/month		Average per capita food expenditure, s/ps/month		Balance, %		
	9 месяцев / 9 months		9 месяцев / 9 months		9 месяцев / 9 months		9 месяцев / 9 months		
	2011	2012	2011	2012	2011	2012	2011	2012	
Пятая квинтиль	1 094 279	1 110 058							Fifth quintil
Баткенская область	88 355	77 126	5 858	6 704	1 799	1 393	30,7	20,8	Batken oblast
Джалал-Абадская область	135 314	102 475	5 229	5 462	1 547	1 365	29,6	25,0	Djalal-Abad oblast
Иссык-Кульская область	89 456	95 566	6 342	7 151	2 051	1 895	32,3	26,5	Issyk-Kul oblast
Нарынская область	31 953	49 073	5 250	6 192	1 265	1 296	24,1	20,9	Naryn oblast
Ошская область	254 988	245 433	5 166	6 390	1 664	1 794	32,2	28,1	Osh oblast
Таласская область	22 889	33 166	5 383	5 615	1 450	1 291	26,9	23,0	Talas oblast
Чуйская область	179 155	245 894	5 920	6 456	2 006	2 106	33,9	32,6	Chui oblast
г. Бишкек	292 169	261 327	5 376	6 295	2 182	1 852	40,6	29,4	Bishkek city
Средневзвешенный баланс			5 512	6 352	1 870	1 781	33,9	28,0	Average weighted balance

Таблица 7: Продовольственный баланс домохозяйств в стоимостном выражении по результатам обследований уровня жизни
(все население по расходным квинтильным группам и регионам, сомов)

Table 7: Household Food Balance expressed in value terms based on results of surveys of living standard
(total population by expenditure quintile groups and by regions, som)

	Население, человек		Общие среднедушевые расходы, сом/чел/месяц		Среднедушевые расходы на питание, сом/чел/месяц		Баланс, %		
	Number, people		Average per capita expenditures s/ps/month, total		Average per capita food expenditure, s/ps/month		Balance, %		
	9 месяцев / 9 months		9 месяцев / 9 months		9 месяцев / 9 months		9 месяцев / 9 months		
	2011	2012	2011	2012	2011	2012	2011	2012	
Все население	5 477 620	5 551 888							Total population
Баткенская область	441 101	448 849	2 501	2 204	1 115	995	44,6	45,1	Batken oblast
Джалал-Абадская область	1 036 644	1 054 226	2 070	1 723	1 050	948	50,7	55,0	Djalal-Abad oblast
Иссык-Кульская область	444 520	448 003	2 496	2 457	1 311	1 276	52,5	51,9	Issyk-Kul oblast
Нарынская область	262 137	264 947	2 231	2 302	730	804	32,7	34,9	Naryn oblast
Ошская область	1 386 734	1 403 598	2 586	2 440	1 292	1 304	50,0	53,5	Osh oblast
Таласская область	231 819	235 327	2 042	1 586	975	792	47,8	50,0	Talas oblast
Чуйская область	814 870	822 581	2 967	3 106	1 414	1 532	47,7	49,3	Chui oblast
г.Бишкек	859 795	874 357	3 649	2 999	1 747	1 372	47,9	45,7	Bishkek city
Средневзвешенный баланс			2 658	2 430	1 283	1 208	48,3	49,7	Average weighted balance

Таблица 7: (продолжение)

Table 7: (continued)

	Население, человек		Общие среднедушевые расходы, сом/чел/месяц		Среднедушевые расходы на питание, сом/чел/месяц		Баланс, %		
	Number, people		Average per capita expenditures s/ps/month, total		Average per capita food expenditure, s/ps/month		Balance, %		
	9 месяцев / 9 months		9 месяцев / 9 months		9 месяцев / 9 months		9 месяцев / 9 months		
	2011	2012	2011	2012	2011	2012	2011	2012	
Первая квинтиль	1 095 392	1 111 491							First quintile
Баткенская область	111 470	112 721	1 223	1 070	635	588	52,0	54,9	Batken oblast
Джалал-Абадская область	284 985	423 285	1 167	1 009	584	580	50,1	57,5	Djalal-Abad oblast
Иссык-Кульская область	117 918	80 066	1 103	1 042	692	640	62,8	61,4	Issyk-Kul oblast
Нарынская область	92 100	94 069	949	955	384	373	40,5	39,1	Naryn oblast
Ошская область	215 956	169 758	1 219	1 217	760	732	62,3	60,2	Osh oblast
Таласская область	92 694	117 263	1 167	945	589	465	50,5	49,2	Talas oblast
Чуйская область	165 749	101 345	1 179	1 016	655	545	55,6	53,6	Chui oblast
г.Бишкек	14 520	12 985	1 257	1 022	745	482	59,3	47,2	Bishkek city
Средневзвешенный баланс			1 161	1 039	632	575	54,5	55,3	Average weighted balance

Таблица 7: (продолжение)

Table 7: (continued)

	Население, человек		Общие среднедушевые расходы, сом/чел/месяц		Среднедушевые расходы на питание, сом/чел/месяц		Баланс, %		
	Number, people		Average per capita expenditures s/ps/month, total		Average per capita food expenditure, s/ps/month		Balance, %		
	9 месяцев / 9 months		9 месяцев / 9 months		9 месяцев / 9 months		9 месяцев / 9 months		
	2011	2012	2011	2012	2011	2012	2011	2012	
Вторая квинтиль	1 094 691	1 107 586							Second quintile
Баткенская область	108 943	124 133	1 720	1 596	867	881	50,4	55,2	Batken oblast
Джалал-Абадская область	282 791	241 813	1 725	1 614	926	901	53,7	55,8	Djalal-Abad oblast
Иссык-Кульская область	78 432	115 301	1 700	1 593	973	940	57,2	59,0	Issyk-Kul oblast
Нарынская область	43 257	39 642	1 789	1 697	657	689	36,7	40,6	Naryn oblast
Ошская область	322 925	322 654	1 697	1 622	995	973	58,6	59,9	Osh oblast
Таласская область	60 889	49 273	1 732	1 551	870	823	50,2	53,1	Talas oblast
Чуйская область	109 244	93 332	1 794	1 665	1 040	980	58,0	58,8	Chui oblast
г.Бишкек	88 208	121 439	1 795	1 647	977	794	54,4	48,2	Bishkek city
Средневзвешенный баланс			1 730	1 621	945	907	54,6	56,0	Average weighted balance

Таблица 7: (продолжение)

Table 7: (continued)

	Население, человек		Общие среднедушевые расходы, сом/чел/месяц		Среднедушевые расходы на питание, сом/чел/месяц		Баланс, %		
	Number, people		Average per capita expenditures s/ps/month, total		Average per capita food expenditure, s/ps/month		Balance, %		
	9 месяцев / 9 months		9 месяцев / 9 months		9 месяцев / 9 months		9 месяцев / 9 months		
	2011	2012	2011	2012	2011	2012	2011	2012	
Третья квинтиль	1 098 374	1 101 962							Third quintile
Баткенская область	84 872	78 778	2 291	2 078	1 079	1 031	47,1	49,6	Batken oblast
Джалал-Абадская область	243 739	187 685	2 264	2 057	1 160	1 087	51,2	52,8	Djalal-Abad oblast
Иссык-Кульская область	89 695	57 134	2 291	2 136	1 270	1 131	55,4	53,0	Issyk-Kul oblast
Нарынская область	46 702	23 760	2 308	2 105	837	898	36,3	42,7	Naryn oblast
Ошская область	280 031	381 032	2 261	2 124	1 252	1 213	55,4	57,1	Osh oblast
Таласская область	28 693	30 131	2 223	2 053	1 262	1 079	56,8	52,6	Talas oblast
Чуйская область	176 206	129 033	2 267	2 088	1 323	1 082	58,4	51,8	Chui oblast
г.Бишкек	148 437	214 409	2 298	2 104	1 227	1 013	53,4	48,1	Bishkek city
Средневзвешенный баланс			2 273	2 100	1 210	1 109	53,2	52,8	Average weighted balance

Таблица 7: (продолжение)

Table 7: (continued)

	Население, человек		Общие среднедушевые расходы, сом/чел/месяц		Среднедушевые расходы на питание, сом/чел/месяц		Баланс, %		
	Number, people		Average per capita expenditures s/ps/month, total		Average per capita food expenditure, s/ps/month		Balance, %		
	9 месяцев / 9 months		9 месяцев / 9 months		9 месяцев / 9 months		9 месяцев / 9 months		
	2011	2012	2011	2012	2011	2012	2011	2012	
Четвертая квинтиль	1 093 788	1 121 169							Fourth quintile
Баткенская область	68 128	67 717	2 962	2 691	1 312	1 192	44,3	44,3	Batken oblast
Джалал-Абадская область	155 337	153 146	2 988	2 723	1 505	1 472	50,3	54,1	Djalal-Abad oblast
Иссык-Кульская область	87 521	97 794	2 922	2 724	1 480	1 321	50,6	48,5	Issyk-Kul oblast
Нарынская область	49 329	53 549	2 970	2 702	948	960	31,9	35,5	Naryn oblast
Ошская область	302 168	287 069	2 955	2 711	1 488	1 446	50,3	53,3	Osh oblast
Таласская область	27 601	22 476	2 873	2 684	1 350	1 567	47,0	58,4	Talas oblast
Чуйская область	142 986	186 092	3 024	2 706	1 540	1 501	50,9	55,5	Chui oblast
г.Бишкек	260 718	253 326	3 014	2 745	1 523	1 259	50,5	45,9	Bishkek city
Средневзвешенный баланс			2 979	2 718	1 466	1 369	49,2	50,4	Average weighted balance

Таблица 7: (продолжение)

Table 7: (continued)

	Население, человек		Общие среднедушевые расходы, сом/чел/месяц		Среднедушевые расходы на питание, сом/чел/месяц		Баланс, %		
	Number, people		Average per capita expenditures s/ps/month, total		Average per capita food expenditure, s/ps/month		Balance, %		
	9 месяцев / 9 months		9 месяцев / 9 months		9 месяцев / 9 months		9 месяцев / 9 months		
	2011	2012	2011	2012	2011	2012	2011	2012	
Пятая квинтиль	1 095 375	1 109 680							Fifth quintile
Баткенская область	67 688	65 501	5 664	4 952	2 148	1 662	37,9	33,6	Batken oblast
Джалал-Абадская область	69 792	48 297	4 430	4 064	2 052	2 205	46,3	54,3	Djalal-Abad oblast
Иссык-Кульская область	70 954	97 709	5 426	4 556	2 558	2 236	47,1	49,1	Issyk-Kul oblast
Нарынская область	30 749	53 927	5 392	4 785	1 357	1 444	25,2	30,2	Naryn oblast
Ошская область	265 653	243 085	4 703	4 554	1 906	2 120	40,5	46,6	Osh oblast
Таласская область	21 942	16 184	5 317	3 934	2 055	1 458	38,7	37,1	Talas oblast
Чуйская область	220 685	312 779	5 414	4 870	2 161	2 220	39,9	45,6	Chui oblast
г.Бишкек	347 912	272 197	5 271	4 638	2 374	2 059	45,0	44,4	Bishkek city
Средневзвешенный баланс			5 147	4 668	2 160	2 078	42,0	44,5	Average weighted balance

Таблица 8. Доля населения, потребляющая адекватно йодированную соль (15 мкг/г и более)
(в процентах)

Table 8. The share of population using enough/adequately iodized salt (15 mkg/gr and more)
(as a %)

	2008	2009	2010	2011	2012
Кыргызская Республика / Kyrgyz Republic	80,3	81,7	81,1	86,7	81,2
Баткенская область / Batken oblast	89,5	93,7	92,9	82,6	78,0
Джалал-Абадская область / Djalal-Abad oblast	72,9	75,6	78,0	83,5	74,2
Иссык-Кульская область / Issyk-Kul oblast	76,4	64,9	64,0	82,8	75,1
Нарынская область / Naryn oblast	59,2	89,4	79,0	89,2	82,2
Ошская область / Osh oblast	77,6	77,7	78,1	84,6	77,6
Таласская область / Talas oblast	76,2	66,3	71,0	69,3	58,5
Чуйская область / Chui oblast	78,9	81,6	87,1	89,3	88,3
г. Бишкек / Bishkek city	100,0	100,0	99,7	99,6	99,6

Source: Integrated sampling survey of household budgets

Note: In 2012, 3,2% of population used non-iodized salt, 15,5% of population used inadequately iodized salt (less than 15 mkg/gr).

Таблица 9. Производство муки в 1 квартале 2013 г.

Table 9. Production of flour in the 1st quarter of 2013
(thsd. tons)

	Produced - total	including enriched	Share of enriched flour in total volume
Кыргызская Республика / Kyrgyz Republic	61285,9	366	0,6
Иссык-Кульская область / Issyk-Kul oblast	3154,9	366	11,6
Джалал-Абадская область / Djalal-Abad oblast	8769	-	-
Нарынская область / Naryn oblast	3131,6	-	-

	Produced - total	including enriched	Share of enriched flour in total volume	
Баткенская область / Batken oblast	3847,8	-	-	-
Ошская область / Osh oblast	8642,4	-	-	-
Таласская область / Talas oblast	1464,2	-	-	-
Чуйская область / Chui oblast	11435,2	-	-	-
г.Бишкек / Bishkek city	17822,6	-	-	-
г.Ош / Osh city	3018,2	-	-	-

Data on production of enriched flour are provided to state statistical bodies based on report for June 2012. Previously, these data were not extracted from total volume of produced flour.

**Таблица 9. Индикаторы продовольственной безопасности
Кыргызской Республики**

Table 9. Food Security Indicators of the Kyrgyz Republic

Таблица 9.1. Уровень суточной энергетической ценности рациона человека

(ккал)

Table 9.1. Level of daily energy value of people diet

(k/Cal)

Период/Period	Фактическая ценность рациона ¹ /Actual dietary value ¹	Минимальная норма/Minimal ratio	Фактическое значение индикатора (гр. 2/гр.3)/Actual meaning of the indicator (paragraph 2/ paragraph 3)
1	2	3	4
Янв.-март /Jan-March 2007	2196	2431	0,90
янв.-июнь/Jan-June 2007	2184	2431	0,90
янв.-сент./Jan-Sept. 2007	2253	2431	0,93
2007	2218	2431	0,91
янв.-март/Jan-March 2008	2287	2431	0,94
янв.-июнь/Jan-June 2008	2277	2431	0,94
янв.-сент./Jan-Sept. 2008	2299	2431	0,95
2008	2295	2431	0,94
янв.-март/Jan-March 2009	2395	2431	0,99
янв.-июнь/Jan-June 2009	2348	2431	0,97
янв.-сент. /Jan-Sept. 2009	2356	2101	1,12
2009	2358	2101	1,12
янв.-март/Jan-March 2010	2380	2101	1,13
янв.-июнь/Jan-June 2010	2323	2101	1,11
янв.-сент./Jan-Sept. 2010	2305	2101	1,10
2010	2319	2101	1,10
янв.-март/Jan-March 2011	2338	2101	1,11
янв.-июнь/Jan-June 2011	2272	2101	1,08
янв.-сент./Jan-Sept. 2011	2260	2101	1,08
2011	2281	2102	1,09
янв.-март/Jan-March 2012	2178	2101	1,04
янв.-июнь/Jan-June 2012	2139	2101	1,02
янв.-сент./Jan-Sept. 2012	2162	2102	1,03

¹ По результатам интегрированного выборочного обследования бюджетов домашних хозяйств и рабочей силы./¹ According to results of the Integrated Sampling Survey of Household Budgets and Labour Force.

Таблица 9.2. Достаточность потребления отдельного продукта ²
(в среднем на душу населения, кг в месяц)

Table 9.2. Sufficiency of selected food consumption²
(on average per capita, kg. per month)

	Фактическое потребление/Actual consumption								
	Хлеб и хлебо- продукты/ Bread and bread products	Мясо и мясопро- дукты/Me at and meat products	Молоко и молочные продукты/ Milk and dairy products	Яйца (штук)/ Eggs (pieces)	Овощи и бахчевые/ Vegetables and melons	Фрукты и ягоды/ Fruits and berries	Картофель/ Potatoes	Сахар/ Sugar	Масло раститель- ное/ Vegetable oil
Янв.-март / Jan-March 2007	15,2	3,0	10,8	5,0	12,0	2,1	8,2	1,3	0,5
Янв.-июнь/ Jan-June 2007	15,4	3,0	15,5	5,1	6,2	1,4	8,0	1,5	0,4
Янв.-сент./ Jan-Sept. 2007	16,2	3,2	17,4	5,1	10,9	2,6	8,4	1,6	0,5
2007	15,3	2,9	17,4	5,9	12,2	3,0	8,0	1,8	0,5
Янв.-март/ Jan-March 2008	15,3	3,0	10,9	5,2	12,2	2,1	8,2	1,4	0,5
Янв.-июнь/ Jan-June 2008	15,4	3,0	15,7	5,2	6,2	1,2	8,0	1,6	0,5
Янв.-сент./ Jan-Sept 2008	16,2	3,3	17,4	5,2	11,0	2,0	8,4	1,6	0,6
2008	15,9	3,1	18,1	6,3	12,6	2,5	8,3	1,8	0,6
Янв.-март/ Jan-March 2009	16,1	3,2	12,2	5,9	12,7	0,9	8,3	1,7	0,9
Янв.-июнь/ Jan-June 2009	16,0	3,1	16,5	5,5	6,6	0,5	8,4	1,7	0,7
Янв.-сент./ Jan-Sept. 2009	16,6	3,4	18,1	5,3	12,0	2,2	8,5	1,6	0,6
2009	15,9	3,2	17,7	6,6	12,6	2,5	8,2	1,8	0,7
Янв.-март / Jan-March 2010	16,0	3,4	12,2	6,2	12,6	1,4	8,2	1,7	1,0
Янв.-июнь/ Jan-June 2010	15,9	3,3	16,5	5,6	6,3	0,5	8,3	1,7	1,0
Янв.-сент./ Jan-Sept. 2010	16,4	3,3	17,8	5,6	12,1	2,3	8,3	1,6	0,7
2010	15,9	3,2	17,7	6,6	12,5	2,5	8,1	1,8	1,0
Янв.-март/ Jan-March 2011	16,1	3,5	12,3	6,2	10,5	1,0	8,3	1,6	1,0
Янв.-июнь/ Jan-June 2011	15,9	3,3	16,5	5,9	4,4	0,5	8,1	1,7	1,0
Янв.-сент./ Jan-Sept. 2011	16,3	3,3	17,7	5,7	12,0	2,3	8,3	1,5	1,0
2011	15,8	3,2	17,8	6,8	12,5	2,4	8,2	1,8	1,0
Янв.-март/ Jan-March 2012 ¹	16,1	3,4	12,3	6,2	7,4	1,0	8,4	1,5	1,0
Янв.-июнь/ Jan-June 2012 ¹	15,9	3,3	16,5	5,9	4,5	0,3	8,2	1,6	1,0
Янв.-сент./ Jan-Sept. 2012 ¹	16,2	3,3	17,8	5,8	12,0	2,3	8,4	1,5	1,0
2012 ¹	15,7	3,2	17,9	6,7	12,6	2,4	8,3	1,7	0,9
Янв.-март/ Jan-March 2013 ¹	16,1	3,3	12,4	6,2	7,4	0,9	8,4	1,5	1,0

¹ Данные предварительные/Preliminary data

² В пересчете на первичный продукт./Expressed in primary product.

Таблица 9.3. Экономическая доступность продуктов питания
(в среднем на душу населения, сомов в месяц)

Table 9.3. Economical availability of foodstuffs
(on average per capita, soms per month)

Период/Period	Размер среднемесячных затрат домохозяйств на питание/Monthly average expenditures of households for food	Размер среднемесячных совокупных затрат домохозяйств/Monthly average aggregated expenditures of households	Фактическое значение индикатора (гр. 2/гр.3)*100/ Actual meaning of the indicator (paragraph 2/ paragraph 3)*100
1	2	3	4
Янв.-март /Jan-March 2007	567	1178	48
Янв.-июнь/Jan-June 2007	597	1280	47
Янв.-сент./Jan-Sept. 2007	675	1466	46
2007	720	1579	46
Янв.-март/Jan-March 2008	887	1600	55
Янв.-июнь/Jan-June 2008	984	1890	52
Янв.-сент./Jan-Sept 2008	1052	2090	50
2008	1093	2257	48
Янв.-март/Jan-March 2009	1089	2143	51
Янв.-июнь/Jan-June 2009	1076	2177	49
Янв.-сент./Jan-Sept. 2009	1089	2136	51
2009	1095	2264	48
Янв.-март /Jan-March 2010	1018	2198	46
Янв.-июнь/Jan-June 2010	1039	2241	46
Янв.-сент./Jan-Sept. 2010	1080	2366	46
2010	1106	2449	45
Янв.-март/Jan-March 2011	1233	2493	49
Янв.-июнь/Jan-June 2011	1263	2592	49
Янв.-сент./Jan-Sept. 2011	1283	2658	48
2011	1299	2762	47
Янв.-март/Jan-March 2012	1209	2480	49
Янв.-июнь/Jan-June 2012	1199	2435	49
Янв.-сент./Jan-Sept. 2012	1208	2430	50

Таблица 9.4. Дифференциация расходов на питание по социальным группам

(в среднем на душу населения, сомов в месяц)

Table 9.4. Differentiation of expenditures for food by social groups

(on average per capita, soms per month)

Период/Period	Первая квинтильная группа (с наименьшими доходами)/The first quintile group (with the lowest incomes)	Пятая квинтильная группа (с наибольшими доходами)/The fifth quintile group (with the highest incomes)
Янв.-март /Jan-March 2007	215	1129
Янв.-июнь/Jan-June 2007	243	1143
Янв.-сент./Jan-Sept. 2007	284	1275
2007	305	1317
Янв.-март/Jan-March 2008	309	1665
Янв.-июнь/Jan-June 2008	399	1792
Янв.-сент./Jan-Sept 2008	472	1836
2008	718	1565
Янв.-март/Jan-March 2009	708	1629
Янв.-июнь/Jan-June 2009	663	1623
Янв.-сент./Jan-Sept. 2009	670	1635
2009	648	1669
Янв.-март /Jan-March 2010	614	1574
Янв.-июнь/Jan-June 2010	583	1615
Янв.-сент./Jan-Sept. 2010	608	1692
2010	671	1680
Янв.-март/Jan-March 2011	790	1742
Янв.-июнь/Jan-June 2011	861	1809
Янв.-сент./Jan-Sept. 2011	879	1870
2011	893	1878
Янв.-март/Jan-March 2012	814	1737
Янв.-июнь/Jan-June 2012	837	1754
Янв.-сент./Jan-Sept. 2012	845	1781

Таблица 9.5. Емкость внутреннего рынка отдельных продуктов ²

(тыс. тонн)

Table 9.5. Capacity of internal market of selected products ²

(thsd. tons)

	Хлеб и хлебо- продукты/ Bread and bread products	Мясо и мясопро- дукты/ Meat and meat products	Молоко и молочные продукты/ Milk and dairy products	Яйца (млн. штук)/ Eggs (mln. pieces)	Овощи и бахчевые/ Vegetables and melons	Фрукты и ягоды/ Fruits and berries	Картофель/ Potatoes	Сахар/ Sugar	Масло раститель- ное/ Vegetable oil
Янв.-март / Jan-March 2007	237,3	46,3	168,8	78,5	188,4	32,3	128,2	20,0	7,5
Янв.-июнь/ Jan-June 2007	483,1	92,6	487,1	158,7	194,8	43,4	250,1	48,4	13,1
Янв.-сент./ Jan-Sept. 2007	761,2	150,1	818,9	242,3	512,1	124,3	394,3	75,4	24,9
2007	963,2	182,3	1094,1	371,7	766,8	188,5	502,5	111,1	31,4
Янв.-март/ Jan-March 2008	241,6	48,1	171,9	81,7	193,1	32,9	129,5	22,8	7,7
Янв.-июнь/ Jan-June 2008	487,1	93,6	494,9	163,9	196,1	37,5	252,0	50,8	16,1
Янв.-сент./ Jan-Sept 2008	770,1	155,0	825,9	248,3	524,0	96,7	396,8	76,4	28,5
2008	968,3	191,8	1103,2	382,4	768,7	152,0	506,7	112,3	35,0
Янв.-март/ Jan-March 2009	245,9	49,3	186,7	90,2	194,3	14,1	127,2	25,3	14,3
Янв.-июнь/ Jan-June 2009	491,0	95,1	505,7	168,9	201,4	14,1	258,5	51,3	20,7
Янв.-сент./ Jan-Sept. 2009	765,4	156,1	832,7	244,3	552,2	99,6	391,8	72,7	28,8
2009	976,9	198,9	1089,5	405,1	774,3	154,4	504,6	109,1	40,4
Янв.-март / Jan-March 2010	248,3	52,8	190,0	96,5	195,9	22,0	127,2	26,3	15,0
Янв.-июнь/ Jan-June 2010	494,1	101,2	511,6	173,7	196,2	14,4	258,4	51,5	30,0
Янв.-сент./ Jan-Sept. 2010	766,6	153,1	829,8	262,3	563,9	105,8	387,7	74,7	32,8
2010	991,7	201,0	1103,1	412,3	778,9	155,8	504,8	110,6	62,4
Янв.-март/ Jan-March 2011	252,1	54,8	193,6	97,6	165,3	16,4	130,5	25,5	15,1
Янв.-июнь/ Jan-June 2011	499,4	102,5	518,0	185,7	138,3	14,7	253,9	53,1	31,4
Янв.-сент./ Jan-Sept. 2011	771,4	158,0	837,8	268,7	565,2	106,4	390,8	70,0	45,3
2011	999,3	203,6	1120,5	432,1	788,7	151,4	517,8	112,6	62,3
Янв.-март/ Jan-March 2012 ¹	256,1	54,6	195,8	99,5	118,3	16,6	133,3	23,7	15,9
Янв.-июнь/ Jan-June 2012 ¹	506,7	105,2	528,5	187,2	144,6	11,0	261,1	52,7	31,9
Янв.-сент./ Jan-Sept. 2012 ¹	777,0	159,6	856,6	280,1	576,0	111,3	402,6	71,7	46,2
2012 ¹	1009,6	204,4	1149,9	432,6	810,3	156,3	530,5	107,1	57,8
Янв.-март/ Jan-March 2013 ¹	261,8	53,7	201,6	100,8	120,3	14,4	136,6	24,4	16,3

¹ Данные предварительные/Preliminary data

² В пересчете на первичный продукт./Expressed in primary product.

Таблица 9.6. Баланс фактического уровня производства продовольствия в Кыргызской Республике
(тыс. тонн)

Table 9.6. Balance of actual level of food production in the Kyrgyz Republic
(thsd. tons)

	Производство основных видов продовольствия/Production of main types of food								
	Пшеница в весе после доработки/ Wheat in net weight	Мясо в убойном весе/ Meat in slaughter weight	Молоко сырое/ Raw milk	Яйца (млн. штук)/ Eggs (mln. pieces)	Овощи и бахчевые/ Vegetables and melons	Фрукты и ягоды/ Fruits and berries	Картофель/ Potatoes	Сахар/ Sugar	Масло растительное/ Vegetable oil
Янв.-март / Jan-March 2007	-	42,2	204,5	70,1	-	-	-	-	4,5
Янв.-июнь/ Jan-June 2007	24,5	84,9	570,8	190,5	32,7	1,8	21,9	9,5	7,4
Янв.-сент./ Jan-Sept. 2007	678,6	132,3	973,6	293,7	711,6	122,5	974,3	16,0	11,2
2007	708,9	183,1	1240,0	373,7	908,9	180,5	1373,8	36,8	17,6
Янв.-март/ Jan-March 2008	-	42,8	210,0	72,7	-	-	-	6,6	4,2
Янв.-июнь/ Jan-June 2008	37,9	85,6		193,1	39,4	6,8	22,1	10,7	7,6
Янв.-сент./ Jan-Sept 2008	720,0	133,3	998,7	292,4	742,5	140,8	976,7	10,8	11,0
2008	746,2	184,2	1273,5	369,3	947,0	185,4	1334,9	10,9	18,3
Янв.-март/ Jan-March 2009	-	43,3	216,7	67,9	0,0	-	-	0,0	4,9
Янв.-июнь/ Jan-June 2009	29,0	86,8	607,1	186,1	41,9	4,8	25,4	0,1	7,8
Янв.-сент./ Jan-Sept. 2009	943,3	135,1	1032,6	291,1	791,4	155,8	899,3	0,2	12,1
2009	1056,7	185,5	1314,7	369,3	969,7	200,5	1393,1	5,9	20,6
Янв.-март / Jan-March 2010	-	44,1	224,2	71,5	0,0	-	-	0,0	5,6
Янв.-июнь/ Jan-June 2010	9,5	88,1	628,4	191,4	28,0	3,7	19,0	0,0	9,5
Янв.-сент./ Jan-Sept. 2010	756,3	138,7	1070,6	294,4	803,4	146,0	781,3	0,1	12,8
2010	813,3	187,8	1359,9	373,1	969,3	193,1	1339,4	14,0	18,1
Янв.-март/ Jan-March 2011	-	44,4	223,8	73,8	0,0	-	-	0,0	4,7
Янв.-июнь/ Jan-June 2011	11,1	89,0	627,5	201,8	31,9	4,1	22,4	0,0	8,1
Янв.-сент./ Jan-Sept. 2011	778,6	136,5	1068,0	312,0	787,4	161,0	798,7	0,0	11,1
2011	799,8	190,4	1358,1	392,8	972,4	215,1	1379,2	17,0	15,6
Янв.-март/ Jan-March 2012 1	-	43,8	226,2	76,4	0,0	-	-	0,0	4,2
Янв.-июнь/ Jan-June 2012 1	3,6	88,0	636,2	210,2	46,9	5,0	18,8	0,0	6,8
Янв.-сент./ Jan-Sept. 2012 1	535,3	138,4	1085,0	323,7	916,0	168,4	841,1	0,0	9,9
2012 1	540,5	193,7	1382,4	387,2	1059,2	222,7	1312,7	13,3	0,6
Янв.-март 2013 1	-	44,6	230,2	83,8	0,0	-	-	9,0	4,6

¹ Данные предварительные/Preliminary data

Таблица 10. Индикаторы в области защиты детей**Table 10. Child protection indicators****Таблица 10.1. Число детей в учреждениях интернатного типа (возраст 0-17 лет) ¹***(тысяч человек)***Table 10.1. Number of children in boarding schools (aged 0-17) ¹***(thsd. persons)*

	2006	2007	2008	2009	2010	2011	2012	
Кыргызская Республика	5,0	5,1	5,3	5,6	5,0	5,3	5,3	Kyrgyz Republic
Баткенская область	0,3	0,3	0,3	0,3	0,3	0,3	0,3	Batken oblast
Джалал-Абадская область	0,2	0,2	0,2	0,2	0,2	0,2	0,2	Djalal-Abad oblast
Иссык-Кульская область	0,2	0,2	0,2	0,3	0,2	0,2	0,2	Issyk-Kul oblast
Нарынская область	-	-	-	0,1	-	-	-	Naryn oblast
Ошская область	0,4	0,4	0,4	0,4	0,4	0,4	0,3	Osh oblast
Таласская область	0,1	0,1	0,1	0,1	0,1	0,1	0,1	Talas oblast
Чуйская область	2,0	2,1	2,2	2,2	1,9	2,1	2,3	Chui oblast
г.Бишкек	1,5	1,5	1,6	1,7	1,6	1,7	1,6	Bishkek city
г.Ош	0,3	0,3	0,3	0,3	0,3	0,3	0,3	Osh city

¹ Including children who are in orphan asylum, boarding schools for disabled children, for intractable children and children who are in sanatorium and forestry schools.

Таблица 10.2. Коэффициент детей в учреждениях интернатного типа (на 100 000 чел. в возрасте 0-17 лет)**Table 10.2. Coefficient of children in boarding schools (per 100 000 persons aged 0-17)**

	2006	2007	2008	2009	2010	2011	2012	
Кыргызская Республика	258,4	262,9	273,4	282,0	249,3	260,6	256,0	Kyrgyz Republic
Баткенская область	171,3	171,6	172,2	175,4	172,7	170,0	164,2	Batken oblast
Джалал-Абадская область	48,7	48,8	48,8	48,9	48,5	48,0	49,6	Djalal-Abad oblast
Иссык-Кульская область	122,0	123,1	123,3	183,7	121,8	121,0	112,4	Issyk-Kul oblast
Нарынская область	-	-	-	93,5	-	-	-	Naryn oblast
Ошская область	88,0	88,3	88,5	87,4	86,7	85,6	74,2	Osh oblast
Таласская область	109,6	109,7	109,6	106,0	104,7	103,0	121,8	Talas oblast
Чуйская область	844,0	891,3	932,5	849,7	725,0	788,3	840,1	Chui oblast
г.Бишкек	730,6	714,6	742,3	716,1	660,7	683,5	606,2	Bishkek city
г.Ош	349,5	353,3	357,0	342,9	347,5	348,4	312,3	Osh city

Таблица 10.3. Число детей в домах ребенка (возраст 0-3 лет)
(человек)

Table 10.3. Number of children in orphan asylum (aged 0-3)
(persons)

	2006	2007	2008	2009	2010	2011	2012	
Кыргызская Республика	258	238	264	269	251	251	226	Kyrgyz Republic
Баткенская область	-	-	-	-	-	-	-	Batken oblast
Джалал-Абадская область	-	-	-	-	-	-	-	Djalal-Abad oblast
Иссык-Кульская область	-	-	-	-	-	-	-	Issyk-Kul oblast
Нарынская область	-	-	-	-	-	-	-	Naryn oblast
Ошская область	-	-	-	-	-	-	-	Osh oblast
Таласская область	-	-	-	-	-	-	-	Talas oblast
Чуйская область	103	85	98	103	99	99	103	Chui oblast
г.Бишкек	116	119	131	117	118	112	96	Bishkek city
г.Ош	39	34	35	49	34	40	27	Osh city

Таблица 10.4. Коэффициент детей в домах ребенка (на 100 000 чел.в возрасте 0-3 лет)

Table 10.4. Coefficient of children in orphan asylum (per 100 000 persons aged 0-3)

	2006	2007	2008	2009	2010	2011	2012	
Кыргызская Республика	59,9	53,3	56,8	55,4	48,7	46,7	39,4	Kyrgyz Republic
Баткенская область	-	-	-	-	-	-	-	Batken oblast
Джалал-Абадская область	-	-	-	-	-	-	-	Djalal-Abad oblast
Иссык-Кульская область	-	-	-	-	-	-	-	Issyk-Kul oblast
Нарынская область	-	-	-	-	-	-	-	Naryn oblast
Ошская область	-	-	-	-	-	-	-	Osh oblast
Таласская область	-	-	-	-	-	-	-	Talas oblast
Чуйская область	194,8	149,6	160,8	158,5	142,3	135,7	141,1	Chui oblast
г.Бишкек	208,5	197,1	203,4	186,3	171,8	152,5	130,7	Bishkek city
г.Ош	234,6	197,3	192,9	224,4	155,2	188,5	127,2	Osh city

Таблица 10.5. Число детей на попечении приемных родителей или опекунов (в возрасте 0-17 лет)
(тысяч человек)

Table 10.5. Number of children under the ward of adopting parents or guardian (aged 0-17)
(thsd. persons)

	2006	2007	2008	2009	2010	2011	2012	
Кыргызская Республика	7,3	5,7	5,2	5,2	5,6	5,9	6,1	Kyrgyz Republic
Баткенская область	0,4	0,3	0,3	0,3	0,3	0,4	0,3	Batken oblast
Джалал-Абадская область	1,0	0,9	1,0	1,1	1,5	1,6	1,9	Djalal-Abad oblast
Иссык-Кульская область	1,0	0,7	0,9	0,7	0,7	0,8	0,9	Issyk-Kul oblast
Нарынская область	1,0	0,9	0,7	0,6	0,8	1,0	1,0	Naryn oblast
Ошская область	0,2	0,2	0,2	0,3	0,5	0,3	0,3	Osh oblast
Таласская область	0,4	0,1	0,1	0,1	0,1	0,1	0,1	Talas oblast
Чуйская область	1,2	1,4	0,9	1,1	1,0	1,0	0,7	Chui oblast
г.Бишкек	1,4	1,1	1,0	0,9	0,6	0,6	0,7	Bishkek city
г.Ош	0,7	0,1	0,1	0,1	0,1	0,1	0,2	Osh city

Таблица 10.6. Коэффициент детей на попечении приемных родителей или опекунов (на 100 000 чел.в возрасте 0-17 лет)

Table 10.6. Coefficient of children under the care of adopting parents or guardians (per 100 000 persons aged 0-17)

	2006	2007	2008	2009	2010	2011	2012	
Кыргызская Республика	378,9	293,5	268,2	261,8	279,3	290,1	296,1	Kyrgyz Republic
Баткенская область	228,5	171,6	172,2	175,4	172,7	226,4	197,1	Batken oblast
Джалал-Абадская область	243,3	219,6	243,9	269,1	363,6	382,6	440,3	Djalal-Abad oblast
Иссык-Кульская область	609,9	430,8	555,0	428,7	426,4	484,8	540,8	Issyk-Kul oblast
Нарынская область	870,2	787,8	614,9	561,2	745,0	926,8	1002,0	Naryn oblast
Ошская область	44,0	44,2	44,3	65,6	108,4	64,2	58,4	Osh oblast
Таласская область	438,5	109,7	109,6	106,0	104,7	103,0	100,5	Talas oblast
Чуйская область	506,4	594,2	381,5	424,8	381,6	375,4	262,8	Chui oblast
г.Бишкек	681,8	524,1	464,0	379,1	247,8	241,2	258,6	Bishkek city
г.Ош	815,5	117,8	119,0	114,3	115,8	116,1	179,8	Osh city

Таблица 10.7. Усыновление/удочерение

(человек)

Table 10.7. Adoption

(persons)

	2006	2007	2008	2009	2010	2011	2012	
Кыргызская Республика	842	916	971	1064	936	1065	797	Kyrgyz Republic
Баткенская область	55	42	21	30	69	40	37	Batken oblast
Джалал-Абадская область	112	84	154	172	161	146	141	Djalal-Abad oblast
Иссык-Кульская область	43	110	58	200	102	154	176	Issyk-Kul oblast
Нарынская область	103	15	23	62	84	122	90	Naryn oblast
Ошская область	89	98	57	82	70	79	69	Osh oblast
Таласская область	48	90	49	96	46	83	66	Talas oblast
Чуйская область	187	271	430	222	230	214	93	Chui oblast
г.Бишкек	139	163	101	140	133	169	73	Bishkek city
г.Ош	66	43	78	60	41	58	52	Osh city

Таблица 10.8. Коэффициент усыновленных/удочеренных (на 100 000 чел. в возрасте 0-17 лет)

Tables 10.8. Coefficient of adopted children (per 100 000 persons aged 0-17)

	2006	2007	2008	2009	2010	2011	2012	
Кыргызская Республика	43,4	47,3	50,1	53,6	46,7	52,4	38,6	Kyrgyz Republic
Баткенская область	31,4	24,0	12,1	17,5	39,7	22,6	20,6	Batken oblast
Джалал-Абадская область	27,3	20,5	37,6	42,1	39,0	34,9	33,3	Djalal-Abad oblast
Иссык-Кульская область	26,2	67,7	35,8	122,5	62,1	93,3	105,8	Issyk-Kul oblast
Нарынская область	89,6	13,1	20,2	58,0	78,2	113,1	83,0	Naryn oblast
Ошская область	19,6	21,6	12,6	17,9	15,2	16,9	14,6	Osh oblast
Таласская область	52,6	98,7	53,7	101,7	48,2	85,5	67,0	Talas oblast
Чуйская область	78,9	115,0	182,3	85,7	87,8	80,3	34,0	Chui oblast
г.Бишкек	67,7	77,7	46,9	59,0	54,9	68,0	28,3	Bishkek city
г.Ош	76,9	50,6	92,8	68,6	47,5	67,4	59,9	Osh city

***FOOD SECURITY AND POVERTY INFORMATION BULLETIN
OF THE KYRGYZ REPUBLIC***

Statistical bulletin

Persons responsible for publication:

Galina Samohleb

Guljakan Omoralieva

Telephone: +996 (312) 324655,
625591

Published: june, 2013
Format A4 60x84 1/8
Offset printing

Copies: 20

Volume 9 p.1.
Order №

*Printing and Publication Department
Main Computing Center of the Natstatcom
of the Kyrgyz Republic*

NATIONAL STATISTICAL COMMITTEE OF THE KYRGYZ REPUBLIC

QUESTIONNAIRE

for defining user needs in statistical information

Dear user of statistical information,

In order to improve the quality of statistical information and meet demands of users of all categories the National Statistical Committee of the Kyrgyz Republic propose you to answer the following questions:

Does this publication meet your needs?

What kind of indicators would you like to see in this publication?

We would be very appreciated and grateful if you inform us about shortcomings of our work or give your comments and proposals for improvement of our activity in the field of statistics. Your opinion is very important for us and will be considered mandatory.

Please, send your wishes and recommendations to the following e-mail address: chturdubaeva@stat.kg or NSC KR Web site www.stat.kg. (Column "feedback")

Thank you in advance for the cooperation.