

**The National Statistical Committee
of the Kyrgyz Republic**

**FOOD SECURITY AND POVERTY
INFORMATION BULLETIN
KYRGYZ REPUBLIC**

4 / 2010

Bishkek 2011

**The National Statistical Committee
of the Kyrgyz Republic**

**FOOD SECURITY AND POVERTY
INFORMATION BULLETIN
KYRGYZ REPUBLIC**

4 / 2010

Bishkek 2011

Food security and poverty information bulletin of the Kyrgyz Republic

Editorial board:

- Chairman - O. Abdykalykov
- Members: - D. Baijumanov
- N. Tulegabylov
- A. Osmonaliev
- A. Kim
- K. Koichumanova
- R. Plesovskih
- C. Turdubaeva

For information regarding this publication please contact:

374, Frunze street, Bishkek city;

phone: 996 (312) 324655, 325591;

fax: 66-01-38; web-site: www.stat.kg;

e-mail: nsc_mail@stat.kg;

The National Statistical Committee of the Kyrgyz Republic;

Sample survey department.

Food security and poverty information bulletin of the Kyrgyz Republic contains the analyses of the current situation in food security during for 2010. The bulletin combines and systematizes materials on food security – availability of food, production, access to food, as well as indicators of consumption per capita.

Additional materials contain information of the Ministry of agriculture of the Kyrgyz Republic, Ministry of social security of population of the Kyrgyz Republic, and also Department of the state veterinary of the Kyrgyz Republic.

Appendices of the bulletin contain review of hydro-meteorological conditions of the Kyrgyz Republic in the 4th quarter of 2010, average retail prices for food, estimates on food balance for 2010 by basic foodstuff and indicators for 1st half of 2009-2010 on dietary energy supplies by results of integrated survey of 5016 households, as well as main indicators of food security.

The publication is quarterly.

Copies: 120 in Russian and 35 in English;

The publication is also available in electronic format.

While using statistical data in mass media and scientific papers, disseminating data through information nets, hard copies, CD discs users have to refer to their sources (article 17 of the Law on State statistics).

Signs and symbols:

- Event is not existing;
- ... Data are not available;
- 0,0 Negligible and insignificant value.

Details will not add to the total shown because of rounding.

Contents

Overview	4
Introduction	5
I. Selected Socio-Economic Indicators	6
1.1. Gross Domestic Product	6
1.2. Prices and Tariff Indices	7
1.3. Labour Market	9
II. Availability of Food	10
2.1. Agriculture	10
2.1.1. Crop Production	11
2.1.2. Livestock Production	12
2.1.3. Producer Prices	13
2.1.4. Trade in Basic Foodstuff	14
2.1.5. Availability of Food Per Capita	14
III. Access to Food	16
3.1. Retail Prices	16
3.2. Cash Incomes of the Population	18
IV. Special articles	20
4.1. On food security indicators	20
4.2. On measures of state support to vulnerable groups of the population in 2010	22
4.3. On results of the count of cattle and poultry in the Kyrgyz Republic as of the end of 2010	23
4.4. On epizootic situation in the Kyrgyz Republic for 2010	27
List of Abbreviations	29
Methodological explanations	30
Annex:	
1. Review of Hydro-meteorological Conditions of the Kyrgyz Republic in the 4 th Quarter of 2010	31
2. Average Retail Prices (by region, 4 th Quarter of 2009-2010)	32
3. Food Balance	35
4. Food Balance expressed in dietary energy supplies by results of surveys of daily consumption and estimation of daily needs by social and demographic groups and regions (1 st half of 2009-2010)	37
5. Food Balance expressed in dietary energy supplies by results of surveys of daily consumption and estimation of daily needs by quintile groups and regions (1 st half of 2009-2010)	45
6. Household Food Balance expressed in value terms based on surveys of living standards by income quintile and regions (1 st half of 2009-2010)	50
7. Household Food Balance expressed in value terms based on surveys of living standards by expenditure quintile and regions (1 st half of 2009-2010)	56
8. Food security indicators of the Kyrgyz Republic	62

OVERVIEW

In 2010, according to preliminary estimates, real growth rate of Gross Domestic Product (GDP) made up KGS 212177.4 million and decreased by 1.4% as compared to the previous year.

Page 6

In December 2010, the CPI, which characterizes inflation rate, made up 102.4% as compared to the previous month and in comparison with December 2009 prices for goods and services have increased by 19.2%.

Page 7

In 2010, gross output of agriculture, hunting and forestry made up KGS 116034.7 million and index of physical volume made up 97.2% as compared to the previous year.

Page 10

In 2010, cereals (in weight after processing) was collected by 17.9% more than in the previous year, including wheat – by 23.0%.

Page 11

In January – December 2010, producer prices for agricultural production has decreased by 0.9% as compared to the corresponding period of the previous year.

Page 13

Introduction

Pursuant the Rome Declaration, adopted on November 17, 1996 during the World Food Summit, the Kyrgyz Republic as a member of the international community assumed responsibility to "...conduct a policy aimed at the alleviation of poverty and inequality, ... providing physical and economic access for all people and at all times to sufficient, safe and nutritious food to meet their dietary needs and food preferences for an active and healthy life".

To this end, the Government of the Kyrgyz Republic, in cooperation with the European Commission in Kyrgyz Republic has formulated a National Food Security Policy. The government in 1999 agreed this policy that forms part of the national policy of the Kyrgyzstan. The policy (and EC funding under the EC-Food Security Programme) sustains reforms in food security related sectors, such as agriculture, health, education and social protection.

Food safety is a physical availability of a foodstuff, access possibility to the indicated foodstuff (the products made in households, and acquired through the market, gifts and other sources as well) and consumption of a foodstuff in that quantity which are necessary for maintenance of requirements for a food.

Food security presumes that food must be physically **available** in the required quantities, adequate **access** to those food supplies both through the market and other sources (i.e. sufficient purchasing power), and the **utilization** of food supplies in the quantity sufficient to meet the specific dietary needs of individuals.

Availability: physical existence of quantitatively and qualitatively adequate and safe food items.

Access: all households and household members have sufficient resources to obtain appropriate food (through production, purchase or donation);

Stability: continuous ensurance of availability of, access to and appropriate use and utilization of food. If not, individuals will suffer from chronic or transitory food insecurity

The aim of the KR Food Security Information Bulletin is to provide up-to date, reliable information and analysis of the food security situation in the republic.

This issue has been prepared by the National Statistical Committee of the Kyrgyz Republic. The publication contains materials provided by Meteorological Office of the Ministry of Ecology and Emergency of the Kyrgyz Republic, Water Management Department of the Ministry of Agriculture, Water Resources and Processing Industry of the Kyrgyz Republic. The bulletin was financed by the European Commission in the Kyrgyz Republic and technical support was provided by UN FAO.

I. Socio-Economic Indicators

The socio-economic indicators depict the overall conditions of the country, whose population's food and nutrition security is being analyzed.

1.1. Gross Domestic Product

According to preliminary estimates, in 2010, Gross Domestic Product (GDP), calculated by *production method*, was valued at KGS 212177.4 million and in comparison with 2009 GDP has decreased by 1.4%. Real GDP growth rate without “Kumtor” mining company made up 2.1%. GDP per capita was valued at KGS 40.9 thousand and decreased by 2.7%.

Table 1: Main socio-economic indicators

	2009	2010
Present population (million, average annual)	5,13	5,19
GDP nominal in KGS million	201222,9	212177,4
O/w:		
Agriculture (%)	18,8	18,5
Industry and construction (%)	23,6	25,0
Services (%)	46,6	45,9
GDP per capita (KGS thousand)	39,2	40,9
GDP growth (%)	102,9	98,6
CPI ¹	106,8	108,0
Food and alcohol-free beverage price indices ¹	101,1	106,5
Service price indices ¹	118,1	107,2
Number of employed, thousand people	2216,4	-
Average monthly salary (KGS)	6161	6870 ²
Import, million USD ³	3040,2	3227,9
Export, million USD ³	1673,0	2028,5
Exchange rate ⁴ :		
KGS/USD exchange rate	42,89	45,96
KGS/EUR exchange rate	59,93	61,06
KGS/RUR exchange rate	1,36	1,51
KGS/KZT exchange rate	0,29	0,31
Minimal consumer budget, KGS	3263,22	3502,65

¹ As a % to the corresponding period of the previous year

² January-November, excluding small businesses

³ Including volumes of foreign trade of the natural persons

⁴ According to the data of the National Bank of the Kyrgyz Republic

1.2. Price and Tariff Indices

In December 2010, as compared to the previous year, the CPI, which characterizes inflation rate, made up 102.4% and as compared to December 2009 prices for good and service increased by 19.2%.

In December 2010 price for foodstuff and alcohol-free beverages increased by 4.2% as compared to the previous month. During the month prices for fruits and vegetables increased by 8.3%, fresh meat – by 5.9%, dairy products, cheese and eggs - by 5.1%, oils and fats - by 2.9%, bakery products and cereals - by 2.2%.

Table 2: Price Index for Basic Foodstuff by Months of 2010

(as a % to the previous month)

	Wheat flour		Bread Lepeshka	Beef	Mutton	Milk	Eggs	Sunflower oil	
	premium quality	first quality							
January	99,6	99,4	100,0	99,9	101,6	102,7	101,2	101,4	100,6
February	99,5	99,7	101,4	100,0	101,3	101,2	99,4	99,5	98,7
March	99,8	99,4	100,0	99,9	103,0	101,6	96,5	97,8	101,2
I quarter ¹	98,9	98,5	101,4	99,9	106,1	105,5	97,1	98,6	100,5
April	99,5	99,0	100,0	100,0	100,9	101,6	98,3	95,9	103,1
May	99,4	99,0	99,6	99,8	100,5	100,9	96,8	97,5	102,1
June	100,2	100,7	100,5	99,9	101,2	101,2	97,0	100,0	99,7
II quarter ¹	99,2	98,7	100,1	99,8	102,6	103,7	92,3	93,6	104,9
July	102,4	104,1	101,3	100,4	100,8	101,2	98,7	97,6	101,2
August	112,8	117,6	105,1	103,3	103,4	101,6	101,9	99,3	105,8
September	109,6	110,2	106,8	103,9	105,5	102,3	107,0	104,4	113,3
III quarter ¹	126,6	134,9	113,7	107,8	110,0	105,2	107,5	101,2	121,4
October	101,7	103,0	102,4	102,5	105,0	102,6	103,8	111,3	107,0
November	102,8	105,2	104,6	104,3	102,9	101,4	104,5	104,1	107,8
December	102,3	103,7	101,0	100,9	106,2	106,7	109,0	103,2	103,7
IV quarter ¹	106,9	112,3	108,3	107,8	114,8	111,0	118,2	119,5	119,7

¹ Progressive total for three quarters

In December 2010, prices for fresh fruits increased by 3.2%, for fresh vegetables by 9.8% as compared to the previous month.

Table 3: Price Index for Selected Type of Fruits and Vegetables in 2010

(as a % to the previous month)

	Carrot	Onion	Cabbage	Beet	Cucumber	Tomato	Apples	Potatoes
January	100,0	100,0	106,4	94,0	113,0	119,8	105,0	110,5
February	110,0	107,5	107,4	102,7	103,4	144,1	107,0	112,2
March	122,2	117,2	116,4	104,4	103,3	105,5	107,1	104,0
I quarter ¹	134,4	126,0	133,1	100,8	120,7	182,1	120,3	128,8
April	99,7	103,4	102,0	92,1	69,6	85,7	101,4	101,7
May	113,3	107,5	95,9	105,5	67,1	71,0	97,5	95,8
June	119,8	95,9	82,5	123,5	69,3	86,4	105,2	80,4
II quarter ¹	135,4	106,6	80,8	120,0	32,4	52,6	104,0	78,3
July	133,1	82,2	82,0	122,8	70,4	47,6	92,2	72,8

	Carrot	Onion	Cabbage	Beet	Cucumber	Tomato	Apples	Potatoes
August	89,9	88,1	87,2	84,3	100,6	52,2	81,7	85,7
September	81,1	99,9	86,4	90,8	159,0	91,0	104,9	113,0
III quarter ¹	97,1	72,4	61,8	94,0	112,7	22,6	79,0	70,5
October	92,5	120,8	90,0	98,9	135,8	187,8	104,4	117,6
November	95,9	113,3	115,4	104,2	136,6	в 3,6 п.	111,6	103,3
December	107,6	103,3	125,8	106,0	135,8	109,8	108,2	123,5
IV quarter ¹	95,5	141,3	130,6	109,2	в 2,5 п.	в 7,3 п.	126,1	150,0

¹ Progressive total for three quarters

In January-December 2010, prices for food products and non-alcohol beverages have increased by 27%, including vegetable oils – by 47.3%, flour – by 42.6%, meat – by 32.7%, bread – by 22.2%, sugar – by 22.5%. Prices for alcohol beverages and tobacco increased by 12.9%.

Table 4: Price Index for Selected Types of Food
(as a %)

	December 2010		January-December 2010
	to December 2009	to November 2010	to January- December 2009
Bakery products and cereals	126,0	102,2	100,8
Meat	127,9	105,0	110,3
Fish	116,8	101,4	109,8
Dairy products, cheese and eggs	112,0	105,1	101,1
including eggs	111,7	103,2	103,0
Oils and fats	137,8	102,9	110,0
Fruits	138,8	103,3	107,0
Vegetables	137,8	110,8	95,1
Sugar, jam, honey, chocolate and confectionery	117,3	105,3	120,6
Non-alcohol beverages	115,1	103,4	113,3
Alcohol beverages	107,0	100,7	106,4
Tobacco	129,0	104,4	111,5

In December 2010, average prices for flour, bread, lepushki, mutton, beef, potato, gasoline and fuel have increased.

Table 5: Average Prices for Selected Representative Goods in 2010
(KGS/kg)

	Wheat flour premium first quality quality	Bread	Lepeshka	Mutton	Beef	Potatoes	
January	24,85	18,73	28,00	36,28	183,01	177,33	14,16
February	24,72	18,67	28,36	36,27	184,98	179,62	15,46
March	24,66	18,56	28,35	36,25	187,74	184,86	16,15
April	24,56	18,37	28,35	36,25	190,79	186,44	16,57
May	24,62	18,17	28,31	36,02	192,16	186,44	25,34
June	24,67	18,27	28,45	35,98	194,45	188,35	19,82
July	25,22	19,04	28,82	36,13	196,79	189,78	13,67

	Wheat flour		Bread	Lepeshka	Mutton	Beef	Potatoes
	premium first quality quality						
August	28,43	22,46	30,30	37,37	200,10	196,44	11,56
September	31,21	24,68	32,36	38,95	204,96	207,50	12,64
October	31,73	25,45	33,14	40,01	210,26	218,06	14,99
November	32,57	26,79	34,78	41,89	213,34	224,58	15,43
December	33,29	27,77	35,15	42,23	227,05	238,04	19,07

More detailed information on prices for food is available in the section 3 “Access to Food”.

In January-December 2010, import of foodstuff made up 12.7% of total import.

Table 6: Import and Export of Foodstuff¹
(mln. USD)

	2009		2010 ²	
	USD million	as a % to total	USD million	as a % to total
Импорт	384,8	12,7	408,5	12,7
Экспорт	358,1	21,4	698,0	34,4

¹ Including volumes of foreign trade of the natural persons

² Preliminary data

1.3. Labour market

According to data of the Ministry of the Kyrgyz Republic on Labour, Employment and Migration, the number of unemployed population, who have registered as looking for job as of January 1, 2011 increased by 0.7% as compared to the similar date of the previous year, the number of unemployed increased by 3.3%. Registered unemployment rate made up 2.6% of economic active population.

Table 7: Unemployed Population Registered in Bodies of State Employment Service as of January 1, 2011

	Total thsd. people	of which unemployed		
		thsd. people	as a % to the corresponding date of the previous year	as a % to the corresponding date of the previous month
Kyrgyz Republic	98,1	63,4	103,3	98,2
Batken oblast	8,0	5,5	93,5	97,3
Djalal-Abad oblast	21,8	13,4	91,3	98,5
Issyk-Kul oblast	5,3	4,5	97,4	98,3
Naryn oblast	11,0	6,6	98,3	97,9
Osh oblast	15,0	13,1	100,5	95,5
Talas oblast	3,8	2,2	106,1	105,3
Chui oblast	8,6	6,2	94,3	100,6
Bishkek city	13,1	9,9	in 1,5 times	99,6
Osh city	8,5	2,0	140,9	98,0

2. Availability of Food

Availability of food: physical existence of quantitatively and qualitatively adequate and safe food items

2.1. Agriculture

In 2010, gross output of agriculture, hunting and forestry made up KGS 116034.7 million and index of agricultural production was 97.2% as compared to the 2009.

Tables 8: Index of agricultural production Agricultural Production

	As a % to			
	the corresponding period of the previous year		the previous month	
	2009	2010	2009	2010
January	101,4	102,0	72,3	63,1
February	101,8	102,1	105,4	106,2
March	102,3	102,9	107,4	107,8
January-March	101,9	102,4	-	-
April	102,5	102,0	109,4	108,0
May	101,4	102,0	139,9	140,6
June	104,3	94,9	139,8	123,7
January-June	102,5	100,2	-	-
July	106,0	99,2	2,5 p.	2,3 p.
August	121,5	88,3	105,8	99,8
September	96,6	97,1	131,6	140,4
January-September	105,0	96,6	-	-
October	125,9	101,6	66,2	71,9
November	105,9	111,7	40,2	47,6
December	101,1	102,3	62,1	69,2
January-December	107,0	97,2	-	-

Of total production, livestock production accounts for 44.9%, crop production – 53.0%, services – 2.0%, hunting and forestry – 0.1%.

Table 9: Gross output of agriculture, hunting and forestry by territory in 2010

	KGS million (at current prices)	as a % to	
		previous year	previous year
Kyrgyz Republic	116034,7	97,2	100
Batken oblast	9244,4	99,5	8,0
Djalal-Abad oblast	21195,8	102,6	18,3
Issyk-Kul oblast	15856,2	94,0	13,7
Naryn oblast	7479,6	95,3	6,4
Osh oblast	21868,9	100,0	18,8
Talas oblast	10384,4	97,6	9,0
Chui oblast	28806,7	93,8	24,8
Bishkek city	614,3	99,9	0,5
Osh city	584,4	100,5	0,5

2.1.1. Crop production

In 2009, the total sown area under agricultural crops made up 1145.7 thousand hectares, which is higher by 23.9 thousand hectares or 2.0% than in the previous year. Cereals occupied 625.8 thousand hectares (54.6% of total sown area), technical crops, accordingly, 94.8 thousand (8.3%), potatoes, vegetable and melons – 133.6 thousand (11.7%) and fodders – 291.5 thousand (25.4%).

Unused arable land size has decreased in comparison with the previous year by 25.1 thousand hectares and made up 122.5 thousand hectares. Main reasons for not using arable lands were: 59.6 hectares because of dryness; 21.8 – remoteness and stony ground, 11.8 – lack of water and irrigation network shutdown; 11.4 thousand – lack of fuel, seeds and technique; 5.5 hectares – salinization and bogging; 5.1 hectares – lack of funds.

In 2010, as a result of adverse weather conditions have failure and wrote off 5.2 hectares of grain crops and leguminous plants (including maize), 413 hectares - potatoes, 201 hectares - cotton, 167 – vegetables, 120 hectares – oil crops, 48 hectares - tobacco, 26 hectares – sugar beet, 25 hectares – melons and 61 hectares – feed crops. The main causes of crop failure were hail and heavy rains (3.4 hectares) as well as frosts and early fallen snow (2.7 hectares).

Table 10: Gross Harvest of Basic Agricultural Crops in 2010

	Gross harvest, thsd.tons	As a % to 2008
Grains – total (net weight)	1583,8	82,1
Wheat (net weight)	813,3	77,0
Sugar beet (factory)	139,2	в 2,6 p.
Oil crops	60,7	82,7
Potatoes	1339,4	96,1
Vegetables	812,1	97,5
Melons	157,3	114,6
Fruits and berries	193,1	96,3

In 2010, the volume of cereals (at net weight) was lower by 17.9% as compared to the previous years, including wheat - by 23.0%.

Table 11: Grain production by territory in 2010

(at net weight)

	Gross harvest, thsd. tons	As a % to 2009
The Kyrgyz Republic	1583,8	82,1
Batken Oblast	101,8	95,6
Djalal-Abad oblast	239,3	79,6
Issyk-Kul oblast	178,3	70,3
Naryn oblast	39,4	57,1
Osh oblast	270,6	91,0
Talas oblast	136,0	90,3
Chui oblast	612,6	82,0
Bishkek city	0,001	100,0
Osh city	5,8	125,7

In 2010, in average by country yield capacity cereals and legumes including maize made up 25.3 centners per 1 hectare (at net weight) against 29.3 centners per 1 hectare in the previous year.

In Autumn 2010, winter crops were sown lower that in the previous year by 16.0 hectares (by 5.8%).

Table 12: Planting of Winter Crops by Regions (for 2011)

	thsd. hectares	as a % to 2010
Kyrgyz Republic	261,0	94,2
Batken Oblast	14,2	93,2
Djalal-Abad oblast	30,6	80,2
Issyk-Kul oblast	12,6	62,0
Osh oblast	55,5	90,6
Talas oblast	10,6	77,8
Chui oblast	137,4	107,1
Osh city	0,1	119,3

In autumn of the previous year, 98.4 hectares were fall – ploughed which is more by 2.2 hectares (by 2.2%) than in 2009.

2.1.2. Livestock Production

In 2010, production volumes of basic livestock products have increased as compared with the previous year.

Table 13: Production of Basic Livestock Products

	Produced - total		As a % to the corresponding period of the previous year					
			2009		2010			
	December	January-December	December	January-December	December	January-December		
Cattle and poultry for slaughter (at live weight), tons	31947	336909	32858	343101	97,2	101,5	102,9	101,8
Raw milk, tons	81836	1314730	83260	1359893	103,4	103,2	101,7	103,4
Eggs, million pieces	23234	369334	25854	372972	94,7	100,0	111,3	101,0

Increase of production of basic livestock products (excluding wool) was observed in all regions of the country.

Table 14: Production of Basic Livestock Products by Region in 2010

	Cattle and poultry for slaughter (at live weight)		Raw milk		Eggs	
	tons	as a % to 2009	tons	as a % to 2009	tons	as a % to 2009
	Kyrgyz Republic	343101	101,8	1359893	103,4	372972
Batken Oblast	27260	101,3	93552	100,8	21698	102,3
Djalal-Abad oblast	50332	103,7	272154	107,2	43630	106,6
Issyk-Kul oblast	42136	102,9	180315	103,0	74658	101,3
Naryn oblast	48394	100,1	116761	100,5	6640	100,7
Osh oblast	72169	102,1	263767	103,3	42384	103,2
Talas oblast	22857	100,9	84506	102,3	20081	101,6
Chui oblast	78148	101,3	341415	103,0	161130	98,7
Bishkek city	445	106,2	1029	94,5	1534	97,3
Osh city	1360	101,0	6394	101,6	1217	104,4

2.1.3. Producer Prices

In January-December 2010, producer prices for *agricultural products* decreased by 0.9% as compared to the corresponding period of the previous year.

Table 15: Producer Prices for Agricultural Products
(in %)

	Total		Of which prices for products of			
	to the previous month	to December of the previous year	crop production		livestock production	
			to the previous month	to December of the previous year	to the previous month	to December of the previous year
January	106,3	106,3	101,5	101,5	110,3	110,3
February	98,6	104,8	102,9	104,5	95,3	105,1
March	101,2	106,1	101,7	106,3	100,8	105,9
April	99,7	105,7	99,1	105,2	100,2	106,1
May	97,3	102,9	100,0	105,3	95,1	101,0
June	99,7	102,7	100,9	106,3	98,7	99,7
July	102,3	105,1	108,5	115,3	97,0	96,7
August	101,3	106,4	100,0	115,4	102,5	99,1
September	104,0	110,7	107,0	123,5	101,2	100,3
October	106,3	117,7	110,2	136,0	102,4	102,7
November	107,4	126,4	106,7	145,1	108,2	111,1
December	106,9	135,0	108,5	157,4	105,1	116,8

Parallel with decrease of prices for wheat and potatoes in comparison with January-December 2009, by the end of the year prices increased by 1.5 and 1.6 times, correspondingly. If in January-December 2010, there was slightly increase of price for vegetables (by 0.8%) then by the end of the year of 2010, prices for new yield increased by 1.7 times.

During the last year, prices for meat (at alive weight) increased by 6.7% in average.

Table 16: Producer Price Indices of Selected Type of Agricultural Products in 2010
(in %)

	Grain – total	Wheat	Vegetables	Potatoes	Meat (at live weights)	Raw milk	Eggs
	<i>To the previous month</i>						
January	94,6	88,1	105,4	96,9	105,6	121,1	101,7
February	102,3	101,3	98,5	112,9	99,6	87,5	94,1
March	99,9	103,0	103,0	103,3	99,9	102,2	104,8
April	98,4	98,0	100,9	95,6	100,0	100,8	98,6
May	103,2	105,7	104,6	93,1	99,2	86,2	101,1
June	105,6	102,9	104,2	90,3	98,4	98,4	99,6
July	99,5	98,1	107,4	136,2	98,9	92,5	94,9
August	113,0	117,9	101,8	83,2	100,7	107,1	102,0
September	101,7	103,5	115,6	92,8	102,4	99,4	92,6
October	103,7	107,2	110,0	106,7	100,8	105,5	110,9
November	109,8	112,7	97,6	125,0	102,4	122,7	101,4
December	104,4	105,0	104,7	126,2	105,3	104,7	104,7

	Grain – total	Wheat	Vegetables	Potatoes	Meat (at live weights)	Raw milk	Eggs
<i>To the corresponding period of the previous year</i>							
January	60,6	54,1	76,7	71,8	111,8	83,0	92,7
February	59,9	52,3	69,6	83,7	110,4	74,2	84,3
March	62,5	55,8	72,4	85,5	110,4	76,5	88,7
April	59,3	53,6	69,8	81,2	111,4	79,2	87,3
May	69,0	62,3	73,3	60,4	102,0	87,6	93,6
June	69,0	63,6	80,2	45,6	99,5	94,5	100,3
July	76,8	79,2	88,6	63,4	99,3	73,1	75,2
August	104,8	118,4	111,4	94,9	97,0	108,5	92,3
September	103,0	120,0	157,7	98,7	104,3	102,2	83,9
October	118,1	135,3	173,5	122,3	106,3	103,8	89,8
November	136,0	153,0	170,2	137,0	116,2	116,1	99,9
December	140,9	148,9	167,2	160,8	114,4	123,5	105,0
January - December	82,9	82,3	100,8	84,6	106,7	91,0	90,6

2.1.4. Trade of basic foodstuff

As food balance shows (appendix 3), Kyrgyzstan, in general, is provided with foodstuff. Data on export and import of selected foodstuff are given below:

Table 17: Import, Export of Basic Foodstuff
(*thsd. tons*)

	2009	2010*
Import		
Bakery products expressed in grain	585,2	443,7
Sugar and confectioneries	88,0	67,3
Vegetable oil	34,0	40,1
Share of foodstuff in total import, %	12,7	12,7
Export		
Milk and dairy products expressed in milk	108,6	143,3
Sugar and confectioneries	0,3	1,3
Share of foodstuff in total export, %	21,4	34,4

* Preliminary data

The share of foodstuff export in total export for 2010 made up 34.4%. Basic export items are potatoes, vegetables, dairy products and meat.

2.1. 5. Availability of food per capita

The results of the food balances indicate that monthly average availability of foodstuffs remains stable (see table No. 18 and appendix No.3).

Table 18: Consumption level of Basic Foodstuffs
(*per capita, kg/month*)

	2009	2010*
Bread products (expressed in grain)	15,9	15,7
of which processed wheat products (expressed in grain)	13,6	14,1
Potatoes	8,2	8,1
Vegetables and melons	12,6	12,1
Fruits and berries	2,5	2,5
Sugar and confectionery items	1,8	1,8
Meat and meat products	3,2	3,2
Milk and dairy products	17,7	17,7
Eggs, pieces	6,6	6,6
Vegetable fats	0,7	1,0

More detailed information is available in the Annex Table 3 – “Food Balances”².

¹ Preliminary data

² Food balance drawn up based on the document “Methods of compiling the food balance for basic foodstuff” approved by the Ministry of Finance, Ministry of Agriculture, Water Resources and Processing Industry and the National Statistical Committee of the Kyrgyz Republic.

III. Access to Food

Access: foodstuffs must be accessible both in relation of physical availability and purchasing power.

3.1. Retail Prices

Last year increase of prices was observed for all components of inflation: food products and alcohol beverages – by 27.0%, non-food products – by 14.2%, alcohol beverages and tobacco – by 12.9%, services – by 11.9%. With this, in fourth quarter intensive increase (by 8.1%) of prices for consumer goods was observed, as well as for food products and non-alcohol beverages – by 13.2%.

In January-December 2010 increase of prices and tariffs for goods and services was observed in all oblasts of the republic. With this significant increase of prices was observed in Batken (by 28.1%) and Naryn (by 25.7%) oblasts.

Present conjuncture at external and internal markets still defines dynamic of prices for food products. So, if in 2009 (after stabilization of prices in the global markets) prices for food products (excluding alcohol beverages and tobacco) decreased by 7.4%, then last year prices for these products increased by 27.0%. With this, delay of average monthly growth rate was observed in the first half of 2010: from 101.8% for January-March to 99.3% for April-June, and in the second half their increase from 102.8% for July-September to 104.2% for October-December.

In general, during the year prices for bakery products and cereals, which account for a significant share of household expenditures increased by 26.0%. However, in January-May, decrease of prices (by 0.5%) for bread and cereals was observed and from June prices began to rise. Since in the second half of a year the average monthly growth rate made up 4.3%, while the maximum price increase was recorded in August (by 9.6%). This general trend was tracked and in change of prices for flour. Also in January-May, prices for flour decreased by 0.6%, and in June began to rise (average monthly growth rate - 5.7%). With this, flour of first quality was costly by 47.3%, and premium quality – about by thirds.

During 2010 change in prices for bread was unequal. In February there was a first increase of prices (by 1.4%) due to increase of tariffs on electricity. In March and April, prices have not changed and in May, opposite, decrease by 0.4% was observed. In June price for bread increased by 0.5%. Significant increase of price for bread was observed from July to the end of a year (growth rate in average made up 3.5% for month).

Products of enterprises on production of flour-and-cereals industry products and bread also became costly by 1.6% and more than by third, accordingly.

Prices for pastries increased by 11.4%, pasta – by 8.9%, grains – by 7.6% and rice – by 3.6%.

Significantly, prices for meat and meat products increased during last year (by 27.9%). Though, prices increase during the year: in January-July by 1.1% per month in average, and maximum in August-December – by 3.4% in average. Prices for beef have increased (by 37.5%), mutton (by 27.8%) and horsemeat (by 20.4%). Accordingly, prices for sausage goods and preserves (by 9.7%).

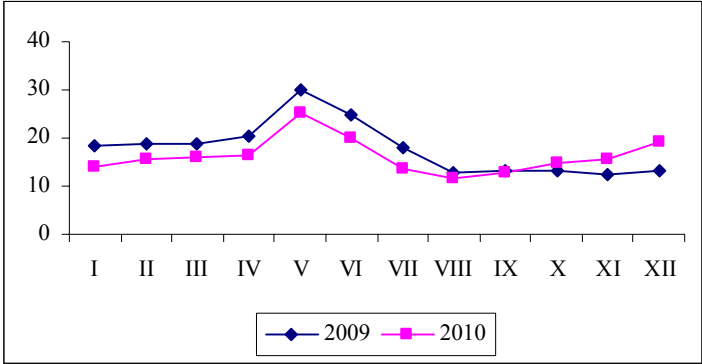
In December 2010, prices for dairy products, cheese and eggs increased by 1.5%. Variation of prices during the year is specific for these products. In January, prices increased by 0.9%, from February to July prices decreased by 1.2% per month, and from August to December again increased (average monthly growth rate 3.5%).

In 2009 prices for oils and fats decreased by 14% and in 2010 increased by 37.8%. Vegetable oils were costly by 47.3%, animal fats – 17.6%, butter – by 15.3%, margarine – 7.0%.

Due to seasonal character there is a tendency of change prices for fruits and vegetables. Significant increase of prices was observed in the first and fourth quarters of 2010, in second and third quarters of 2010 – decrease of prices. However, in 2009 fruits and vegetables were chippers by 17.4%, but in 2010 prices increased by 37.0% (fruits – by 38.8%, vegetables – 37.8%).

Potatoes. In the IV quarter of 2010 prices for potatoes increased from KGS 14.99 in October to KGS 19.07 per kilo in December. As compared to similar period of the previous year prices increased by 27.2% and made up KGS 17.94 per kilo.

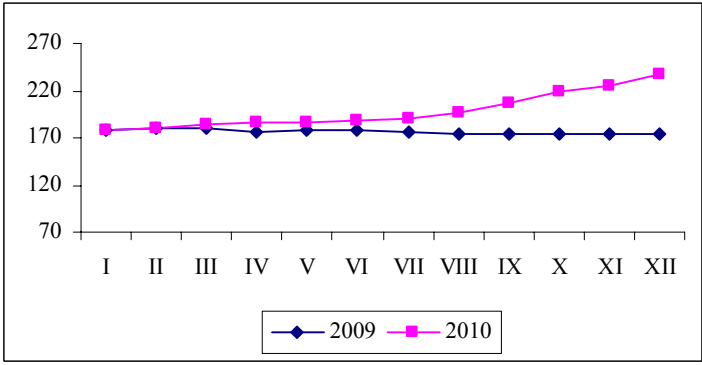
Graph 1: Average Monthly Retail Prices for Potatoes
(KGS/kg)



Mutton. In the IV quarter of 2010, retail prices for mutton increased by 20.5% as compared to the corresponding period of 2009: from KGS 179.98 in the fourth quarter of 2009 to KGS 216.88 per kilo in the fourth quarter of 2010.

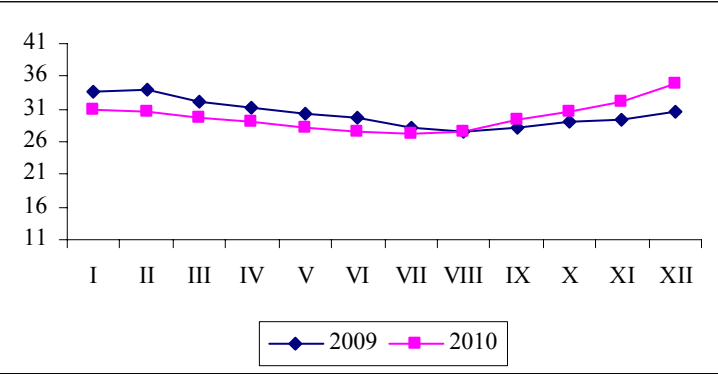
Beef. Prices for beef increased: from KGS 218.06 in October of 2010 to KGS 238.04 per kilo in December of 2010. Increase in prices made up 30.1% as compared to the IV quarter of 2009.

Graph 2 Average Monthly Retail Prices for Beef
(KGS/kg)



Fresh milk. In the IV quarter of 2010 increase of prices for fresh milk was observed (by 13.8%). Prices increased by 9.9% in comparison with the similar period of the previous year and made up KGS 32.54 per kilo.

Graph 3: Average Monthly Retail Prices for Milk
(KGS/l)



3.2. Cash incomes of the population

Cash incomes of the population. According to the results of the sample survey of the households, in the first half of 2010 disposable monthly cash incomes of the population accounted for KGS 2429.9 per capita and increased by 8.8% as compared to the corresponding period of the previous year. Major source of cash incomes of the population was incomes from labor activity, which account for 67.2% of total. The second a major source of cash incomes of the population were incomes from social transfers – 14.4% and agricultural product sale, which account for 12.3%.

In first half of 2010, average real cash incomes of the population accounted for KGS 2361.4 per capita and increased by 5.7%. Growth rate of average real cash incomes of the population has increased by 5.7% as compared with the corresponding period of the previous year.

The structure of cash incomes of households significantly differs depending on place of residence. In urban areas income from employment made up 77.1% and in rural areas – 56.8%. The second significant source of income in rural areas was income from sale of products produced in personal subsidiary farms of the population (21.5%).

In first half of 2010 size of average cash incomes of the population per capita were at the level of KGS 2296.3. Disposable cash incomes of the population were higher than the average national incomes in Bishkek city (by KGS 678.7) and Chui oblast (by KGS 394.1). Average cash incomes of the population per capita were considerably near the average national income in Batken oblast (by KGS 2185.3), Issyk-Kul (by KGS 2140.0) and Osh oblast (KGS 2109.8). Average cash incomes of the population per capita were considerably lower than the average national income in Talas (by KGS 1748.0), Naryn (by KGS 1816.2) and Djalal-Abad (by KGS 2033.4).

About 44% of incomes were disposed to 20% of highest income groups which is higher by 5% as compared to the corresponding period of the previous year.

Table 19: Cash Incomes of the Population by Quintile
(in %)

	I half of 2009	I half of 2010
Cash incomes – total:	100	100
O/w by 20% group		
irst (with lowest incomes)	8,2	6,3
second	12,8	11,0
third	17,2	15,9
fourth	23,2	23,0
fifth (with highest incomes)	38,6	43,8
Income ratio of the 20% lowest and 20% highest income groups of the population, by times	4,7	6,9

The average nominal monthly wage of one employee in 2010 (excluding small enterprises) in comparison with 2009 has increased by 14.3% and made up KGS 7142. Real increase of wages (deflated by the CPI) was valued at 5.8%.

According to official exchange rate of the National Bank of the Kyrgyz Republic, the average wage in 2010 was valued at USD 155.4

Table 20: Average Monthly Nominal and Real Wage by Region in 2010¹

	KGS	As a % to the corresponding period of the previous year		Monthly real wage as a % to the corresponding period of the previous year
		2009	2010	
Kyrgyz Republic	7142	115,3	114,3	105,8
Batken oblast	4755	108,5	114,9	98,4
Djalal-Abad oblast	6025	120,2	112,0	105,7
Issyk-Kul oblast	4840	114,1	113,3	107,6
Naryn oblast	6124	109,5	113,8	104,4
Osh oblast	3651	110,7	111,9	103,5
Talas oblast	5273	118,2	121,2	115,0
Chui oblast	5994	109,3	115,3	105,4
Bishkek city	10338	116,4	113,5	105,5
Osh city	6679	116,7	118,5	109,6

¹ Excluding small enterprises

In 2010, increase of wage was observed in all types of economic activity but more significant in transport and communication, mining, production and distribution of energy, gas and water, public administration.

As of January 1, 2011 as compared to the similar date of 2010, total arrears in salary payments for the republic decreased by 7.3% and as compared to the corresponding period of the previous month – by 10.0%.

Table 21: Total Arrears in Salary Payments by Region¹ as of January 1, 2011

	mln. soms	As a % to the corresponding period of the	
		previous year	previous month
Kyrgyz Republic	259,1	92,7	90,0
Batken oblast	34,4	97,5	88,2
Djalal-Abad oblast	51,7	97,9	86,8
Issyk-Kul oblast	29,6	84,6	88,9
Naryn oblast	9,8	57,0	96,3
Osh oblast	0,1	16,7	0,0
Talas oblast	5,1	118,6	155,2
Chui oblast	67,7	113,8	103,3
Bishkek city	18,4	75,1	84,9
Osh city	42,3	84,3	76,6

¹ Excluding small enterprise

IV. Special articles

4.1. Food Security Indicators

(According to data of Ministry of Agriculture of the Kyrgyz Republic)

According to the Law of the Kyrgyz Republic from 04.08.2008 № 143 “On food security of the Kyrgyz Republic” and Decree of the Kyrgyz Republic from 03.03.2009 № 138 “On approve of Provision on monitoring and food security indicators of the Kyrgyz Republic” 9 positions of food products were defined. On the basis of these positions Ministry is carry out monitoring of provision of needs of internal food market. These are bread products expressed in grain, potatoes, vegetables, fruits and berries, meat in slaughter weight, raw milk, sugar, eggs and vegetable oil.

Since 2010 assessment of provision of internal food market is implemented in accordance with physiologic food standards approved by Decree of the Government of the Kyrgyz Republic from 19.02.2010 №111. According to minimal food standards assessment was implemented before.

In 2010 planned aims on provision of food security of the country was not implemented in full. According to data of the National Statistical Committee of the Kyrgyz Republic, in 2010 production of agriculture, hunting and forestry was produced and made up KGS 116034.7 million at current prices. At the same production of agricultural products made up 97.2% as compared with the corresponding period of 2009, including by crop production – 92.9%. Growth rate in livestock made up 102.3%.

Several factors affect to decrease of volume agricultural production:

- famine of fuel and lubricants related with last political events and temporary closed boarders with Kazakhstan and Uzbekistan. As a result there was no fuel at the most petrol stations specially in high mountain regions of the republic;
- abnormally hot weather, came just at the time of loading grain cereal crops of wheat and barley;
- in the mid of May, simultaneously in the regions there were downpours, mud and freezing.

Total harvest of grain and legumes was collected from an area of 620.600 hectares, gross output of grain made up 1583.800 tons which is below by 345.400 tons as compared with the previous year. With this 813.300 tons of wheat were threshed which is below by 243.400 tons as compared with 2009.

Oilseed crops were collected from an area of 55.2 hectares. Sown areas, as compared with the previous year were reduced by 10.9 thousand hectares, in the 60.700 tons of raw oil was collected or by 12.7 tons less than in the previous year.

Due to reduce of sown area under potatoes (by 2.900 hectares) in comparison with the previous year, gross output made up 1339.400 tons and below by 53.700 tons as compared with the previous year Harvest of vegetable made up 812 thousand tons which is below by 20.500 tons as compared with 2009.

At the same time, 157.300 tons of food melons were collected which is higher by 20.100 tons in comparison with the previous year.

In order to support peasants, government provided state support and money advance received from OSC “Aiyl Bank”, international organizations as well. So, USAID provides humanitarian assistance on delivery of seeds for spring sowing: 100 tons of wheat, 100 tons of bears, 40 tons of maize. Together with the World Bank project “Agricultural investments and services” 40 public seed funds were organized, additionally. Through these funds, 300 tons of certified seeds of winter wheat and 300 tons of ammonium nitrate was bought and disseminated to farmers.

Islamic Development Bank allocated USD 200.000, of which 506.6 tons of high quality seeds of wheat was bought.

Representative of UN FAO in the Kyrgyzstan bought and disseminated 1130 tons of mineral fertilizers (ammonium nitrate and super phosphate) to beneficiaries.

In 2010 the Government of the Kyrgyz Republic allocated 4650 m³ of fuel at price KGS 24 per 1 liter for spring works and 18000 m³ of fuel at price KGS 27 per 1 liter for harvesting time.

To reduce of dependency of the country from export on bread products, Ministry take a measures on increase of quality indicators of wheat. With the support of the Russian Federation 120 tons of super elita, 180 tons of elita and 1200 tons of first reproduction of winter wheat “Krasnodarskii - 99” on the area of 7 thousand hectares with potential harvest 70 centers per hectare were imported and used in the winter sowing.

According to monthly analyze, level of provision of needs of internal food products is sustainable in accordance with physiologic standards by main food products.

According to results of 2010 provision of internal food market of the republic by main food with carry over and in accordance with average physiologic standards made up:

bread products – 281.3%, potatoes – 248.6%, milk – 113.2%, meat – 85.2%, vegetables – 178.8%, vegetable oil – 194.6%, sugar – 70.6%, eggs – 43.7%, fruits and berries – 23.8%.

Provision by the own production made up:

- bread products – 147.2%, potatoes – 248.4%, milk – 113.2%, meat – 59.1%, vegetables – 178.4%, vegetable oil – 58.4%, sugar – 10.1%, eggs – 38.6%, fruits and berries – 18.2%.

Today for our country food security is a problem related with effectiveness of public production and level of population incomes.

Increase of retail and wholesale prices for food products decrease consumption of expensive protein products and facilitate of decrease of access to food products of main part of the population of the country. In this regard, there are needed measures on increase of population buying attitude.

4.2. On measures of State Support to Vulnerable Groups of the Population in 2010

(According data of Ministry of Social Security of the Population of the Kyrgyz Republic)

State allowances

In accordance with Decree of the Government of the Kyrgyz Republic from July 20, 2010 №131 “On strengthening of social support of vulnerable groups of the population”, since July 1, 2010 size of Guaranteed minimal income has increased from KGS 282 to KGS 310, size of monthly social allowances of persons with limited health ability from childhood of II group increased by KGS 1500.

As of January 1, 2010, number of state allowance receivers was 432.6 thsd. people, of which receivers of monthly allowances of lower-income families who have children (MALF) – 365.4 thsd. people, receivers of monthly social allowances (MSA) – 67.2 thsd. people.

As of December 1, 2010 average size of MALF as whole by the country made up KGS 240.5 which is higher by 40% in comparison with period of January 1, 2010 (as of January 1, 2010 average size of MALF made up KGS 171.6).

Average size of MSA made up KGS 1486 (average size of MSB as of January 1, 2010 was KGS 827).

Provision of social guaranties and compensations

Since January 1, 2010, system of cash compensations was introduced instead of statutory benefits.

Today compensations is monthly paid for 25 categories of beneficiaries – veterans of Great and Afghan wars, liquidator of accident on Chernobyl AES, rehabilitee citizens, honorary donors, invalids of Soviet Army, and also persons with limited health ability on hearing and sight.

Since January 1, 2010 cash compensations instead of benefits is based on the Provision of an appointment of cash compensations instead benefits, approved by Decree of the Government of the Kyrgyz Republic from December 22, 2009 №795 “On payment of monthly cash compensations instead of benefits”. Size of cash compensations instead of benefits was established from KGS 1000 to KGS 7000.

As of January 1, 2011 number of receivers of cash compensations was 54.100 people by 25 categories.

Social provision of employees

Analyze of payments of prenatal allowances and interment allowances as of December 1, 2010 shows that the total number allowance receivers were 25.900 people, of which:

- prenatal allowances – 23.700 people;
- interment allowances – 2.200 receivers.

Average size of prenatal allowances made up KGS 1139, interment allowances – KGS 1444.

4.3. On results of the count of cattle and poultry in the Kyrgyz Republic as of the end of 2010

In December 2010, one time count of cattle and poultry was organized and conducted in order to establish actual number of it.

The count of cattle and poultry was conducted in state and collective farms, subsidiary farms of enterprises and organization, peasant farms of individual entrepreneurs, subsidiary farms of the population. The following results were produced:

Table 22: Cattle and poultry

(all categories of farms, as of the end of year, heads)

	2009	2010	2010 to 2009	
			+,-	in %
Large cattle - total	1278070	1298825	20755	101,6
Sheep and goats	4815539	5037715	222176	104,6
Pigs	61315	59791	-1524	97,5
Horses	372951	378448	5497	101,5
Poultry - total	4535762	4749854	214092	104,7
Camels	337	338	1	100,3
Mules	68570	72640	4070	105,9
Rabbits	31514	37118	5604	117,8
Bee families, units	84891	90754	5863	106,9

The analysis of the count of cattle and poultry shows that the number of basic type of animals has tends to grow (except pigs).

Most number of main types of cattle and poultry contains in:

- large cattle in farms of Osh (23.1% from total), Djalal-Abad (19.9%) and Chui (18.5%) oblasts;
- sheep and goats in farms of Djalal-Abad (19.8%), Osh (18.7%), Naryn (17.3%) and Issyk-Kul (14.8%) oblasts;
- horses in farms of Naryn (24.0%), Osh (21.5%), Issyk-Kul (20.6%) and Djalal-Abad (13.9%) oblasts.

Table 23: Number of main types of cattle by territory

(all categories of farms, as of the end of 2010)

	Large cattle		Sheep and goats		Horses	
	Heads	As a % to total number of large cattle	Heads	As a % to total number of sheep and goats	Heads	As a % to total number of horses
Kyrgyz Republic	1298825	100	5037715	100	378448	100
Batken oblast	115938	8,9	454218	9,0	6472	1,7
Djalal-Abad oblast	259010	19,9	997084	19,8	52670	13,9
Issyk-Kul oblast	179203	13,8	747508	14,8	78072	20,6
Naryn oblast	129810	10,0	871296	17,3	90821	24,0
Osh oblast	300282	23,1	942010	18,7	81198	21,5
Talas oblast	64049	4,9	456824	9,1	22929	6,1
Chui oblast	239830	18,5	546427	10,8	45359	12,0
Bishkek city	1034	0,1	5100	0,1	259	0,1
Osh city	8887	0,7	15622	0,3	443	0,1
Special count	782	0,1	1626	0,03	225	0,1

As of the end of 2010, the number of large cattle increased by 2.8% in farms of Batken, by 2.7% - Issyk-Kul, by 2.5% - Osh, by 2.1% - Bishkek city, by 1.7% - Chui, by 1.6% - Osh city, by 0.8% - Djalal-Abad, by 0.7% - Naryn oblasts. The number of large cattle in farms of Talas oblast dropped by 2.1%.

Of total large cattle 2.3% are yaks, the number of which increased by 309 heads (by 1.1%) and make up 29425 heads.

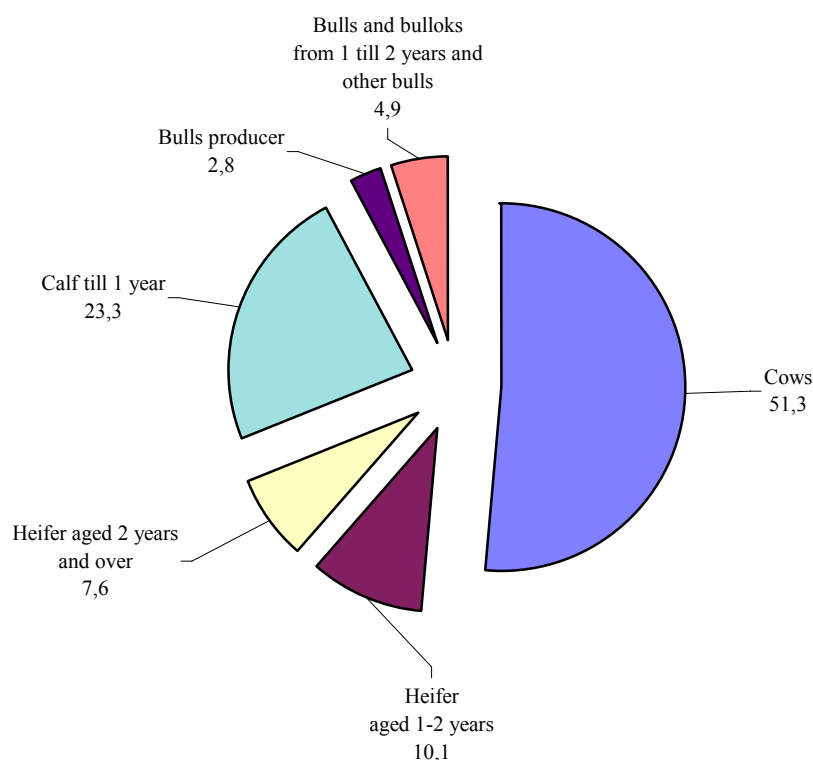
Table 24: Number of yaks by territory
(all categories of farms, as of the end of 2010)

	Heads	As a % to	
		corresponding date of the previous year	total number of yaks
Kyrgyz Republic	29425	101,1	100
Batken oblast	1584	119,6	5,4
Djalal-Abad oblast	294	143,4	1,0
Issyk-Kul oblast	8221	98,4	27,9
Naryn oblast	12698	96,7	43,2
Osh oblast	5471	108,2	18,6
Talas oblast	310	105,1	1,1
Chui oblast	520	138,7	1,7
Bishkek city	7	-	-
Special count	320	87,2	1,1

The number of yaks/cows increased by 2.3% and make up 15333 heads.

In the structure of large cattle the big share is cow (51.3%) and calf till 1 year (23.3%)

Graph 4: Structure of large cattle by sex
(all categories of farms, as of the end of year, as a % to total)



The number of sheep and goats increased by 70.000 heads in farms of Issyk-Kul oblast, Djalal-Abad – by 58.600, Osh and Talas – by 30.000 in each, Naryn – by 16.400, Chui – 14.900 and by 12.700 in Batken oblast.

Of total sheep and goats, 18.7% (942.500 heads) are goats. The highest number of goats is in farms of Djalal-Abad (24.5% of total goats), Naryn (20.6%) and Batken (22.1%) oblasts.

The number of horses increased by 1.400 heads (by 3.2%) in farms of Chui, by 2.100 (by 2.8%) – Issyk-Kul oblast, by 500 (by 2.3%) – Talas oblast.

Despite the increase as compared with 2009 number of cow, female sheep and goats and female lambs over 1 year, their share in the structure of the herd has decreased.

Table 25: Female cattle

(all categories of farms, as of the end of year, heads)

	2009	2010	2010 as a % to 2009	Share in total, %	
				2009	2010
Cow	664294	666450	100,3	52,0	51,3
Female sheep and goats and female lambs over 1 year	3396513	3426694	100,9	70,5	68,0
Main female pigs	18484	19428	105,1	30,1	32,5
Mares aged 3 years and over	177976	181719	102,1	47,7	48,0

The number of cows in farms of Osh oblast increased by 3.500 (by 2.4%), Issyk-Kul – by 1.000 (by 1.1%), Naryn – by 500 (by 0.7%), Djalal-Abad - by 800 (by 0.8%) and Chui – by 500 (by 0.4%). In farms of Talas oblast number of cows decreased by 11.2%.

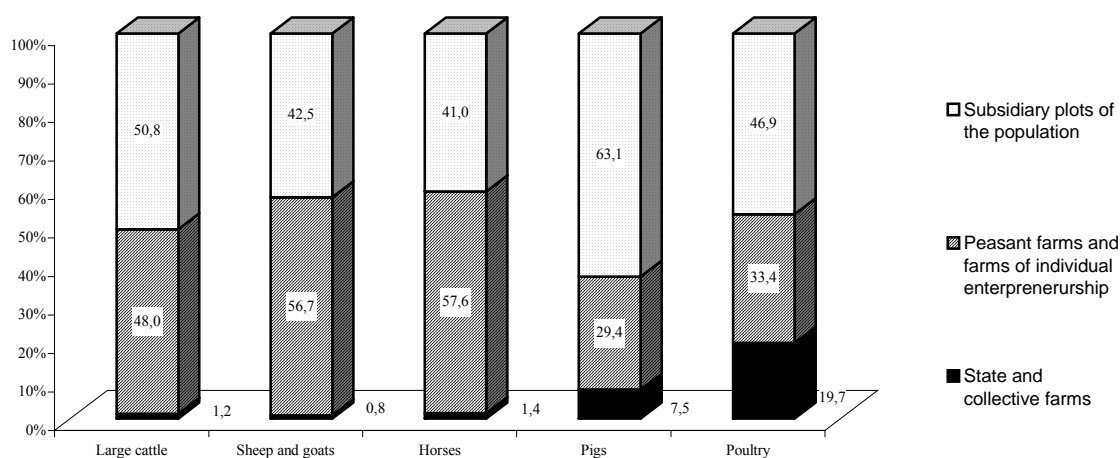
The share of female sheep and goats in total made up 68.0%. The number of female sheep and goats increased by 30.200 heads (by 0.9%). The number of female sheep and goats increased by 11.3% in farms of Issyk-Kul oblast, by 1.9% - Talas oblast.

The number of mares aged 3 years and over increased by 2.1% and the share of these mares in total number of horses made up 48%. The number of mares increased by 2.300 heads in farms of Issyk-Kul oblast, by 600 heads – Naryn oblast.

The biggest share of cattle is in subsidiary farms of the population.

Graph 5: Main types of Cattle and Poultry by category of Farms

(as a % to total)



The number of basic type of cattle (except pigs) in subsidiary farms of the population continues to grow in comparison with the previous year.

Table 26: Cattle and poultry by categories of farms
(as of the end of year, heads)

	State and collective farms		Peasant farms and subsidiary plots of the population	
	2010	2010 as a % to 2009	2010	2010 as a % to 2009
Large cattle	15854	93,1	1282971	101,7
Sheep and goats	39256	80	4998459	104,9
Pigs	4492	90	55299	98,2
Horses	5167	93	373281	101,6
Poultry	934352	117,5	3815502	102,0

As at the end of 2010, there were 36998 rabbits, 72613 mulls, 338 camels and 63463 bee families in the peasant farms and subsidiary plots of the population.

Data on cattle and poultry by republic, oblasts, towns, regions, and also by aiyl okrugs are given in the annexes.

4.4. On epizootic situation in the Kyrgyz Republic for 2010

(According to data of the State Veterinary Department of the Kyrgyz Republic)

In the complex of activities to provide food security, important role is given to the timely delivery of veterinary activities aimed for preventing the emergence and spread of contagious diseases, manufacturing and marketing products of animal origin safe in veterinary and sanitary.

For 10 months of 2010, veterinary specialists of the republic carried out 47.2 mln. different treatments of animals, including diagnostic examinations (except laboratory) – 8.0 mln., vaccinations – 20.6 mln., dehelminizations and other preventive treatments – 18.6 mln.

For 10 months of 2010, 143 trouble points of contagious diseases were recorded where 7775 heads were diseased and 150 heads were died.

From 143 registered unfavorable points:

- rabies – 87;
- murrain – 10;
- malignat edema – 1
- charbon – 5;
- brucellosis – 16;
- pasterellez – 2;
- leptospirosis – 1;
- brad sot – 4;
- horse breeding diseases – 13;
- bird Newcastle diseases – 2;
- bird Pulloroz – 2.

Information on conducted anti-epizootic activities for 2010

(thsd.heads)

	Planned	Actual conducted	% of implementation
Total treatments	44161,6	47170,5	106,8
including:			
Diagnostics	7395,7	7995,2	108,1
Vaccination	20606,3	20612,9	100,0
Dehelminization and other preventive treatment	16159,6	18562,4	114,9

Veterinary service of the republic is working on preventing of emergence and dissemination of especially dangerous diseases of animals. At that time attention is paid for prevention and struggle of contagious disease which common for humans and animals.

Charbon. Fight against charbon is still a serious problem of veterinary required complex solutions.

Today there are 1229 charbon pest-holes. In 2010 there were 5 cases of charbon among cattle and sheep.

According to the medical service of the Kyrgyz Republic, during 2010, 25 cases of charbon diseases among humans were found (in Djalal-Abad oblast -19, Osh - 5 and Osh city - 1).

During the reporting period 1114.300 heads of cattle, 3521.400 small cattle, about 251.000 horses and 66.300 pigs was vaccinated against charbon.

Brucellosis. Allergic studies for brucellosis of animals are conducted annually in order to early identify patients with those diseases. With this, number of animals with positive results for brucellosis decreased year-by-year. In the reporting year there were no find large cattle and poultry with positive results during allergic study.

Since May 25, 2010 veterinary specialists have started mass vaccination of small cattle against brucellosis (conjunctive method) in districts of Naryn, Chui and Issyk-Kul oblasts.

Murrain. In 2010, 9 trouble points were recorded where 9 heads of large cattle were diseased.

In 2010, veterinary specialists have made 1690.3 thousand vaccinations of large cattle against murrain, 1340.7 thousand vaccinations of small cattle and 6.8 thousand vaccinations of pigs.

Last 3 years, trivalent vaccine produced in India is used in the country.

Since October 20, 2010 veterinary specialists have started autumn vaccination of small cattle against brucellosis (conjunctive method) in districts of Naryn, Chui and Issyk-Kul oblasts.

Sheep pox. During 12 months of 2010, 2359.160 heads were vaccinated in the republic against sheep-pox (according to plane it was 2354.000 heads for 12 months).

Plague MRS. During 12 months of 2010, 431.900 heads was preventively vaccinated against plague MRS.

To create a buffer zone from that disease vaccination in the border areas with neighboring republics was conducted.

Sap. More than 40 years sap of horses was not registered in the country. However, 135.730 horses from planned 139.000 was examined for sap allergy in prophylactic purposes.

Rabies. There is still difficult epizootic situation on rabies, because main source of virus of rabies is wild animals (fox, wolf, jackal, etc.), stray animals (dogs, cats) as well.

At present, prophylactic with using of anti – rabies vaccines is one of the most prophylactic methods of effort against rabies in our country.

In order to stabilize the situation with rabies, veterinary specialists of the republic inoculated 350.9 thousand dogs and cats against rabies.

Several regions of the country remain trouble in terms of rabies. During the reporting period, 87 trouble points of rabies were recorded (in Osh oblast - 8, Djalal-Abad oblast - 37, Batken oblast - 34, Chui oblast - 1, Bishkek city - 1 and Osh city - 6).

Veterinary and sanitary activities on dieses liquidation – required vaccination, entrapment of stray dogs and cats were conducted in trouble points where rabies registered.

ABBREVIATIONS

GDP	Gross Domestic Product
WHO	World Health Organization
GMCL	Guaranteed Minimum Consumption Level
UMB	Unified Monthly Benefit
EC	European Commission
CPI	Consumer Price Index
MCB	Minimum Consumer Budget
EC FSP	European Commission Food Security Programme
FAO	UN Food & Agriculture Organization

Methodological explanations

The unemployed – people of 16 and more who during the period under review had no job (income-generating occupation); were in search for a job i.e. applied to public employment institutions or used alternative ways of job finding as well as were ready to start working.

Gross Domestic Product (GDP) – a general indicator of economic activity which is calculated in basic and market prices (GDP nominal) and in comparable prices (GDP real).

Consumer price index on goods and paid services to the population (CPI) – characterises the change in the general price level for goods and services over time. The index measures the correlation of the value of actually fixed set of goods and services during the given period to the value thereof during the basic period.

Average nominal monthly salary is calculated by dividing actually accrued salary fund to the staff and part-time employees by the number used for the calculation of average salary and number of months in a year during the corresponding period.

Average daily per capita calorie intake measures the calories in the consumed food products per one household member as well as chemical composition in proteins and fats.

Official unemployment level – the ratio of people officially registered as unemployed to the number of economically active population expressed in per cent.

Availability of food refers to the physical quantities of food at the disposal of the population as a result of domestic food production, net trade. At the national level availability of food is defined as a combination stocks, commercial import, food aid and own production. Following aspects also refer to availability: climatic conditions, the areas sown and harvested, crop yields, animal numbers and productivity, producer prices for food, food prices in neighboring countries, and the national policies which determine production, trade, distribution and pricing.

The availability of food per capita is calculated using a food supply/utilization balance sheet (food balance). A food balance shows for each basic food commodity, the total physical availability and utilization of that foodstuff over a given period of time, usually 1 year. Total **physical availability** is the sum of opening stocks, production and imports in that commodity in a given period of time. **Total utilization** covers use for human consumption + use as animal feed + seed + losses + exports + closing stocks. In any one period, the availability and utilization of the same commodity must balance. Drawn up over a succession of years, food balances usually reveal a trend in total availability, imports, exports, and the availability of food for human consumption and for feed use. Dividing the annual amount of food available for human consumption by the population gives a key indicator of availability: the average availability of food per capita per year. This measure of food availability is a national average, which takes no account of households' access (i.e. ability to produce, purchase or otherwise obtain) to food.

Access to food refers to the ability of households to obtain adequate safe and appropriate foods to meet their needs for a healthy and active life. Access can be through production for own consumption, market purchases or donations/transfers. Access differs between households according to employment status, income, family or household size, location etc and therefore is generally measured at the household level, using surveys. Elements that contribute to access also include social security benefits, payment delays in salaries and benefits, inflation, the cost of essential food and other items compared to income. National policies which affect employment, income and inflation also affect households' access to food.

Use of food refers to the selection, composition, preparation and allocation of food within the family. Utilization of food refers to the ability of the human body to take and use food within the body. Food use covers knowledge of appropriate diets, and proper allocation of food. The ability of the body to utilize food is affected by its state of health and access to clean drinking water, access to basic health services etc. The ultimate measure of food security is the nutritional status of the population.

Annex

Review of hydro meteorological conditions of the Kyrgyz Republic in the fourth quarter of 2009.

(Source: State Agency on Hydrometeorology of the Ministry of Emergency of the Kyrgyz Republic)

Agro meteorological conditions:

October. The average monthly temperature in most of districts of the country was above the normal by 1...1.5 degrees, in agricultural areas of Chui, Talas, Batken regions and in Kumtor area was above the normal by 2...2.5 degrees, in Chon-Ashuu pass and in agricultural area of Naryn oblast was near the normal.

The amount of rain in most of districts of the country was above the normal (130-180%).

November. The average monthly temperature in most of districts of the country was above the normal by 1...3 degrees, in Kumtor area and Chatkal valley by 4 degree.

The amount of rain in most of districts of the country was below the normal (11-64%), in east part of Issyk-Kul region, in Chon-Ashuu Pass, Kumtor area and Ak-Suu district was near the normal (86-108%), in Jumgal district, in west part of Issyk-Kul district and Suusamyr valley it was not observed.

December. The average monthly temperature in most of districts of the country was above the normal by 2...4 degrees, in Chui valley and Alai district and Chon-Ashuu Pass was below the normal by 1 degree, in piedmont areas of Chui region, Talas valley, Issyk-Kul bolson and Naryn district was near the normal.

The amount of rain in most of districts of the country was below the normal (7-54%), in east part of Issyk-Kul region, in Chon-Ashuu Pass and Alai district was above the normal (152-359%), on the most territory of Chui region, Jumgal and Kara-Suu districts was near the normal (88-113%).

Hydrological conditions in December 2010:

Run-offs of the most rivers of the republic were higher the normal and made up 121-214% of the norm. Near the normal discharge was observed in Naryn, Talas, in the rivers of Sokuluk, Uzun, Akmat, Tentek Sai, Kegart, Zerger, Isfairam Sai and Ak Buura. Decreased discharge (77%) was observed in Chon-Kemin river.

Submerged off-shore ices and shushes were in rivers Naryn, Talas, in the rivers of Chui basin and Padysha Ata; ice gorges in river Djyrgalan; freeze-up – in the rivers Malyi Naryn and Bolshoi Naryn.

Water inflow to Orto-Tokoi reservoir was 154%, Kirov – 105%, Toktogul –138% of the norm.

Table 1: Condition of Reservoirs as of December 31, 2010

Reservoirs	Changes during a month mln. m ³	Volume of water in 2010		Volume of water in 2009	
		mln. m ³	as a % from project volume	mln. m ³	as a % from project volume
Toktogul	-823	18221	93	11704	60
Orto Tokoi	+96	284	60	340	72
Kirov	+99	272	49	328	60

**Таблица 2: Средние потребительские цены на продукты питания
в разрезе регионов в IV квартале 2009-2010 гг.**

(сом/кг)

Table 2: Average retail prices in breakdown by region in IV quarter of 2009-2010

(soms / kg)

Область /Oblast	IV квартал / IV quarter		2010		
	2009	2010	октябрь/ October	ноябрь/ November	декабрь/ December
Картофель / Potatoes					
Баткенская/ Batken	9,79	11,94	11,09	11,94	12,80
Джалал-Абадская / Djalal-Abad	11,40	15,77	14,75	15,25	17,30
Иссык-Кульская / Issyk-Kul	8,14	12,30	11,00	11,00	14,90
Нарынская / Naryn	8,67	11,10	9,83	10,17	13,30
Ошская / Osh	13,58	14,81	13,63	14,00	16,80
Таласская / Talas	10,64	14,87	14,13	13,89	16,60
Чуйская / Chui	11,83	15,60	13,38	14,33	19,09
г.Бишкек/ Bishkek	13,87	17,94	16,30	16,70	20,83
В среднем по республике / Average by the Republic	12,97	16,50	14,99	15,43	19,07
Молоко свежее / Milk					
Баткенская/ Batken	21,00	23,63	24,38	22,50	24,00
Джалал-Абадская / Djalal-Abad	31,75	35,90	31,88	35,63	40,20
Иссык-Кульская / Issyk-Kul	41,93	43,69	41,63	43,46	46,00
Нарынская / Naryn	11,79	19,40	14,40	18,00	25,80
Ошская / Osh	35,71	37,42	35,00	36,25	41,00
Таласская / Talas	18,99	21,26	19,79	21,67	22,33
Чуйская / Chui	21,75	23,22	22,00	23,75	25,90
г.Бишкек/ Bishkek	29,33	32,45	31,13	31,96	34,27
В среднем по республике / Average by the Republic	29,61	32,54	30,68	32,03	34,91
Мука 1 сорта / Flour 1st grade					
Баткенская/ Batken	18,75	26,70	25,50	27,00	27,60
Джалал-Абадская / Djalal-Abad	17,97	26,13	24,50	26,88	27,00
Иссык-Кульская / Issyk-Kul	17,82	24,31	23,00	24,83	25,10
Нарынская / Naryn	18,39	25,01	24,20	25,10	25,72
Ошская / Osh	19,33	27,19	25,58	28,00	28,00
Таласская / Talas	15,45	21,67	20,89	21,63	22,50
Чуйская / Chui	22,00	26,49	25,00	26,25	28,21
г.Бишкек/ Bishkek	18,93	26,96	25,92	26,83	28,13
В среднем по республике / Average by the Republic	19,06	26,67	25,45	26,79	27,77
Рис среднезерный / Rice					
Баткенская/ Batken	60,00	65,28	68,33	65,00	62,50
Джалал-Абадская / Djalal-Abad	53,06	47,22	45,00	47,42	49,25
Иссык-Кульская / Issyk-Kul	57,61	55,19	55,38	55,69	54,50
Нарынская / Naryn	60,44	59,31	57,92	60,00	60,00
Ошская / Osh	76,17	80,00	78,75	78,75	82,50
Таласская / Talas	63,81	56,57	56,43	56,79	56,50
Чуйская / Chui	58,33	58,85	57,21	60,00	59,33
г.Бишкек/ Bishkek	60,56	60,83	60,83	60,83	60,83
В среднем по республике / Average by the Republic	61,86	62,24	61,86	62,19	62,68

Таблица 2: (продолжение)

Table 2: (continued)

Область /Oblast	IV квартал / IV quarter		2010		
	2009	2010	октябрь/ October	ноябрь/ November	декабрь/ December
Сахар-песок / Sugar					
Баткенская/ Batken	42,63	57,50	55,00	57,50	60,00
Джалал-Абадская / Djalal-Abad	44,92	55,04	53,25	54,08	57,80
Иссык-Кульская / Issyk-Kul	43,49	51,01	49,75	49,92	53,37
Нарынская / Naryn	41,87	52,10	50,20	50,95	55,16
Ошская / Osh	44,78	54,82	53,00	53,75	57,70
Таласская / Talas	44,06	52,10	51,17	51,69	53,44
Чуйская / Chui	44,93	51,22	50,13	50,38	53,15
г.Бишкек/ Bishkek	44,53	52,95	51,46	51,48	55,90
В среднем по республике / Average by the Republic	44,45	53,32	51,76	52,09	56,11
Лук / Onions					
Баткенская/ Batken	8,00	12,71	11,13	13,00	14,00
Джалал-Абадская / Djalal-Abad	7,39	15,83	15,50	15,25	16,75
Иссык-Кульская / Issyk-Kul	7,80	18,13	17,50	18,00	18,90
Нарынская / Naryn	15,83	20,86	19,88	19,50	23,20
Ошская / Osh	10,66	16,60	14,00	17,67	18,13
Таласская / Talas	11,33	19,96	18,88	20,00	21,00
Чуйская / Chui	10,53	15,28	14,75	14,25	16,83
г.Бишкек/ Bishkek	13,69	20,97	18,88	22,08	21,95
В среднем по республике / Average by the Republic	12,16	19,00	17,21	19,67	20,13
Хлопковое масло / Cotton oil					
Баткенская/ Batken	80,00	78,75	71,25	80,00	85,00
Джалал-Абадская / Djalal-Abad	72,22	95,25	87,21	98,53	100,00
Иссык-Кульская / Issyk-Kul	78,61	102,71	98,10	104,13	105,88
Нарынская / Naryn	61,11	90,43	80,56	92,59	98,15
Ошская / Osh	68,94	105,00	98,91	107,66	108,44
Таласская / Talas	66,27	76,98	75,53	77,71	77,71
Чуйская / Chui	63,22	101,72	97,70	100,57	106,90
г.Бишкек/ Bishkek	71,58	101,13	99,96	101,71	101,71
В среднем по республике / Average by the Republic	71,04	100,01	96,81	101,06	102,16
Баранина / Mutton					
Баткенская/ Batken	180,00	220,00	220,00	220,00	220,00
Джалал-Абадская / Djalal-Abad	180,00	216,83	202,50	210,00	238,00
Иссык-Кульская / Issyk-Kul	148,65	189,75	181,56	180,94	206,75
Нарынская / Naryn	149,50	194,67	185,00	185,00	214,00
Ошская / Osh	170,00	219,33	205,00	215,00	238,00
Таласская / Talas	151,07	202,58	193,75	200,00	214,00
Чуйская / Chui	158,67	185,68	174,38	177,50	205,17
г.Бишкек/ Bishkek	188,71	223,22	220,00	221,25	228,40
В среднем по республике / Average by the Republic	179,98	216,88	210,26	213,34	227,05

Таблица 2: (продолжение)

Table 2: (continued)

Область /Oblast	IV квартал / IV quarter		2010		
	2009	2010	октябрь/ October	ноябрь/ November	декабрь/ December
	Говядина / Beef				
Баткенская/ Batken	160,00	208,33	200,00	205,00	220,00
Джалал-Абадская / Djalal-Abad	155,00	209,33	193,75	206,25	228,00
Иссык-Кульская / Issyk-Kul	152,52	206,52	193,44	198,13	228,00
Нарынская / Naryn	162,43	214,06	200,00	204,17	238,00
Ошская / Osh	150,00	210,33	195,00	207,50	228,50
Таласская / Talas	167,42	211,25	198,75	205,00	230,00
Чуйская / Chui	179,17	232,49	220,00	230,63	246,83
г.Бишкек/ Bishkek	183,80	236,13	230,84	234,79	242,75
В среднем по республике / Average by the Republic	174,33	226,89	218,06	224,58	238,04
	Конина / Horseflesh				
Баткенская/ Batken	0,00	0,00	0,00	0,00	0,00
Джалал-Абадская / Djalal-Abad	145,00	178,33	155,00	180,00	200,00
Иссык-Кульская / Issyk-Kul	149,50	196,42	187,50	193,75	208,00
Нарынская / Naryn	180,00	209,25	195,00	198,75	234,00
Ошская / Osh	136,67	165,00	155,00	170,00	170,00
Таласская / Talas	193,58	232,50	230,00	227,50	240,00
Чуйская / Chui	220,00	238,83	220,00	237,50	259,00
г.Бишкек/ Bishkek	189,54	217,67	215,00	215,00	223,00
В среднем по республике / Average by the Republic	180,04	207,19	199,89	206,01	215,68
	Свинина / Pork				
Баткенская/ Batken	0,00	0,00	0,00	0,00	0,00
Джалал-Абадская / Djalal-Abad	180,00	0,00	0,00	0,00	0,00
Иссык-Кульская / Issyk-Kul	176,67	169,83	170,00	167,50	172,00
Нарынская / Naryn	0,00	0,00	0,00	0,00	0,00
Ошская / Osh	199,50	200,00	200,00	200,00	200,00
Таласская / Talas	200,00	181,33	180,00	180,00	184,00
Чуйская / Chui	185,00	187,08	186,25	187,50	187,50
г.Бишкек/ Bishkek	222,50	225,00	225,00	225,00	225,00
В среднем по республике / Average by the Republic	210,79	213,91	213,82	213,81	214,09
	Домашняя птица / Chicken Meat				
Баткенская/ Batken	110,00	107,50	105,00	107,50	110,00
Джалал-Абадская / Djalal-Abad	142,02	184,35	180,54	183,57	188,93
Иссык-Кульская / Issyk-Kul	130,17	145,38	140,00	140,00	156,13
Нарынская / Naryn	0,00	0,00	0,00	0,00	0,00
Ошская / Osh	182,67	161,78	163,33	160,00	162,00
Таласская / Talas	155,57	188,75	190,00	201,25	205,00
Чуйская / Chui	145,83	291,27	276,34	290,92	306,55
г.Бишкек/ Bishkek	150,13	162,19	161,06	162,00	163,50
В среднем по республике / Average by the Republic	151,17	171,75	169,36	171,07	174,82
	Яйца / Eggs (1 десяток) / (1 ten)				
Баткенская/ Batken	70,00	71,17	67,50	70,00	76,00
Джалал-Абадская / Djalal-Abad	58,38	63,73	60,94	63,00	67,25
Иссык-Кульская / Issyk-Kul	57,93	68,65	62,45	71,50	72,00
Нарынская / Naryn	56,92	69,79	61,88	72,50	75,00
Ошская / Osh	57,92	64,17	59,17	66,67	66,67
Таласская / Talas	63,88	72,53	65,00	72,92	79,67
Чуйская / Chui	61,44	73,13	68,75	73,13	77,50
г.Бишкек/ Bishkek	58,21	64,46	63,58	64,05	65,76
В среднем по республике / Average by the Republic	58,94	65,67	63,23	65,86	67,92

Продовольственный баланс
по базовым продуктам питания

Таблица 3.

Table 3.

Food balance
of basic foodstuffs expressed in physical quantities

Базовые продукты питания / Basic foodstuffs	Хлебопродукты/ Bread and bread products		Пшеница и продукты ее переработки/		Картофель / Potatoes		Овощи и бахчевые / Vegetables and melons		Фрукты и ягоды / Fruits and berries	
	в пересчете на зерно, тыс. тонн / in grain, thousand tons		в пересчете на зерно, тыс. тонн / in grain, thousand tons		свежий, тыс. тонн / fresh, thousand tons		свежие, тыс. тонн / fresh, thousand tons		свежие, тыс. тонн / fresh, thousand tons	
Физическое количество / Physical quantities	2009	2010 ¹	2009	2010 ¹	2009	2010 ¹	2009	2010 ¹	2009	2010 ¹
1. Запасы на начало года / Opening stocks	1236,8	1654,2	514,0	884,1	688,6	712,2	274,0	293,1	19,0	18,3
2. Произведено продовольствия в стране (+) / Food production in the country	1929,2	1583,8	1056,7	813,3	1393,1	1339,4	969,7	969,3	200,5	193,1
3. Импортировано прод. товаров (+) / Food imports	585,2	443,7	450,8	407,4	1,6	0,7	8,9	8,8	53,6	58,0
Поступление (1-3) (+) Availability	3751,2	3681,7	2021,5	2104,8	2083,3	2052,3	1252,6	1271,2	273,1	269,4
4. Расходы на семена (-) / Seed	143,3	134,9	97,4	90,9	326,4	316,0	0,0	0,0	-	-
5. На корм скоту (-) / Fodder	843,2	949,9	177,6	264,4	184,7	191,1	54,4	56,3	13,3	10,3
6. Потери (-) / Losses	66,2	63,6	19,2	20,1	62,8	61,8	16,3	16,3	11,7	11,2
7. Экспортировано прод. товаров (-) / Food exports	67,4 ³	80,3 ²	3,8 ³	15,6 ²	292,6 ²	266,4 ²	114,5	177,3	75,4	85,0
8. Наличие для потребления населением (-) / Availability for consumption by the population	976,9	979,8	839,4	878,2	504,6	504,8	774,3	753,4	154,4	152,7
9. Другие виды использования (-) / Other utilisation										
Использование (4-9) (-) / Consumption	2097,0	2208,5	1137,4	1269,2	1371,1	1340,1	959,5	1003,3	254,8	259,2
10. Запасы на конец периода / Closing stocks	1654,2	1473,2	884,1	835,6	712,2	712,2	293,1	267,9	18,3	10,2

¹ Предварительные данные/Preliminary data

² С учетом неучтенного экспорта/Including unaccounted export

³ Без учета неучтенного экспорта/Excluding unaccounted export

Таблица 3.(продолжение)

Table 3. (continued)

Базовые продукты питания / Basic foodstuffs	Мясо и мясные продукты / Meat and meat products		Молоко и молочные продукты / Milk and dairy products		Яйца / Eggs		Жиры растительные / Vegetable oil		Сахар и кондитерские изделия / Sugar and confectionery	
	в пересчете на убойный вес, тыс.тонн / in carcassed weight, thousand tons		в пересчете на молоко, тыс. тонн / in milk, thousand tons		миллионов штук / millions		тыс. тонн / thousand tons		в пересчете на сахар, тыс. тонн/expressed in sugar, thsd. tons	
Физическое количество / Physical quantities	2009	2010 ¹	2009	2010 ¹	2009	2010 ¹	2009	2010 ¹	2009	2010 ¹
1. Запасы на начало года / Opening stocks	4,7	4,5	25,4	38,5	15,5	15,3	26,1	40,3	62,3	46,7
2. Произведено продовольствия в стране (+) / Food production in the country	185,5	189,0	1314,7	1359,9	369,3	372,9	20,6	18,1	5,9	14,0
3. Импортировано прод. товаров (+) / Food imports	63,7	99,8	37,9	26,2	42,8	56,7	34,0	40,1	88,0	67,3
Поступление (1-3) (+) Availability	253,9	293,3	1378,0	1424,6	427,6	444,9	80,7	98,5	156,2	128,0
4. Расходы на семена (-) / Seed	-	-	-	-	6,2	6,3	-	-	-	-
5. На корм скоту (-) / Fodder	0,0	0,0	139,8	140,3	1,0	1,0	-	-	-	-
6. Потери (-) / Losses	0,3	0,3	1,6	1,6	0,0	0,0	-	-	0,1	0,1
7. Экспортировано прод. товаров (-) / Food exports	50,2 ²	87,6 ²	108,6	143,3	-	-	0,0	0,0	0,3	1,3
8. Наличие для потребления населением (-) / Availability for consumption by the population	198,9	200,8	1089,5	1100,9	405,1	412,6	40,4	62,3	109,1	110,6
9. Другие виды использования (-) / Other utilisation										
Использование (4-9) (-) / Consumption	249,4	288,7	1339,5	1386,1	412,3	419,9	40,4	62,3	109,5	112,0
10. Запасы на конец периода / Closing stocks	4,5	4,6	38,5	38,5	15,3	25,0	40,3	36,2	46,7	16,0

¹ Предварительные данные/Preliminary data² С учетом неучтенного экспорта/Including unaccounted export

**Таблица 4: Баланс питания в виде энергетической ценности по результатам обследований
ежедневного потребления и оценки ежедневных потребностей**

(все население по демографическим группам и регионам)

**Table 4: Food Balance expressed in nutritional values according to the results of daily intake surveys
and assessment of daily needs**

(total population by age groups and by region)

	Население, человек		Ккал в день на душу населения		Белки в день на душу населения, грамм		Жиры в день на душу населения, грамм		
	Number, people		C/Calories C/d/p		Proteins g/d/p		Fats g/d/p		
	I полугодие / I half year		I полугодие / I half year		I полугодие / I half year		I полугодие / I half year		
	2009	2010	2009	2010	2009	2010	2009	2010	
Все население	5 276 092	5 418 299							Total population
Баткенская область	431 067	433 802	2 219	2 207	56,4	56,4	62,4	65,9	Batken
Джалал-Абадская область	993 761	1 023 132	2 408	2 305	62,4	61,7	58,8	56,9	Djalal-Abad
Иссык-Кульская область	434 882	441 323	2 229	2 307	58,5	58,8	54,3	61,5	Issyk-Kul
Нарынская область	271 480	259 378	2 271	2 077	62,1	55,9	54,4	51,0	Naryn
Ошская область	1 339 205	1 376 957	2 272	2 115	56,9	54,7	58,8	56,1	Osh
Талаская область	219 410	228 995	2 391	2 411	61,6	61,8	63,3	63,0	Talas
Чуйская область	762 492	808 245	2 460	2 563	65,5	68,1	71,4	75,6	Chui
г.Бишкек	823 795	846 467	2 442	2 488	67,2	69,4	69,8	69,0	Bishkek
Суточное потребление			2 348	2 310	61,3	61,1	62,2	62,4	Daily intake
Суточные потребности			2 101	2 101	73,0	73,0	71,0	71,0	Daily needs
Баланс: (+) или (-)			247	209	-12	-12	-9	-9	Balance: (+) or (-)

Таблица 4: (продолжение)
Table 4: (continued)

	Население, человек		Ккал в день на душу населения		Белки в день на душу населения, грамм		Жиры в день на душу населения, грамм		
	Number, people		C/Calories C/d/p		Proteins g/d/p		Fats g/d/p		
	I полугодие / I half year		I полугодие / I half year		I полугодие / I half year		I полугодие / I half year		
	2009	2010	2009	2010	2009	2010	2009	2010	
Население пенсионного возраста	552 414	559 509							Pensioners
Баткенская область	36 014	36 981	2 505	2 439	63,9	64,8	73,5	73,5	Batken
Джалал-Абадская область	101 744	99 180	2 501	2 581	65,4	71,1	63,3	66,6	Djalal-Abad
Иссык-Кульская область	51 467	52 642	2 637	2 807	68,6	71,6	68,0	79,0	Issyk-Kul
Нарынская область	26 619	27 743	2 481	2 107	69,4	57,8	60,6	53,9	Naryn
Ошская область	110 707	110 881	2 663	2 566	66,7	67,5	72,5	72,1	Osh
Таласская область	17 964	18 986	2 647	2 748	70,2	71,2	72,8	75,2	Talas
Чуйская область	105 065	110 032	2 919	3 031	80,6	84,7	92,8	97,9	Chui
г.Бишкек	102 836	103 063	2 624	2 873	76,2	83,9	79,4	86,0	Bishkek
Суточное потребление			2 653	2 714	71,1	74,4	75,1	78,7	Daily intake
Суточные потребности			2 100	2 100	71,0	71,0	72,0	72,0	Daily needs
Баланс: (+) или (-)			553	614	0	3	3	7	Balance: (+) or (-)

Таблица 4: (продолжение)
Table 4: (continued)

	Население, человек		Ккал в день на душу населения		Белки в день на душу населения, грамм		Жиры в день на душу населения, грамм		
	Number, people		C/Calories C/d/p		Proteins g/d/p		Fats g/d/p		
	I полугодие / I half year		I полугодие / I half year		I полугодие / I half year		I полугодие / I half year		
	2009	2010	2009	2010	2009	2010	2009	2010	
Население трудоспособного возраста	2 661 933	2 763 969							Active population
Баткенская область	205 325	212 944	2 482	2 475	63,1	63,5	70,2	74,3	Batken
Джалал-Абадская область	485 267	519 720	2 652	2 513	68,7	67,0	65,0	62,2	Djalal-Abad
Иссык-Кульская область	225 487	226 800	2 480	2 525	65,4	64,7	60,5	66,8	Issyk-Kul
Нарынская область	129 252	118 954	2 534	2 358	68,9	63,6	61,0	57,6	Naryn
Ошская область	633 089	657 305	2 498	2 346	62,3	60,8	65,1	61,8	Osh
Таласская область	103 702	108 409	2 760	2 818	71,1	72,2	73,0	73,5	Talas
Чуйская область	413 371	439 747	2 675	2 765	71,2	73,4	77,2	80,7	Chui
г.Бишкек	466 441	480 090	2 642	2 676	72,7	74,5	75,7	74,5	Bishkek
Суточное потребление			2 588	2 545	67,7	67,5	68,9	68,7	Daily intake
Суточные потребности			2 212	2 212	76,0	76,0	74,0	74,0	Daily needs
Баланс: (+) или (-)			376	333	-8	-9	-5	-5	Balance: (+) or (-)

Таблица 4: (продолжение)
Table 4: (continued)

	Население, человек		Ккал в день на душу населения		Белки в день на душу населения, грамм		Жиры в день на душу населения, грамм		
	Number, people		C/Calories C/d/p		Proteins g/d/p		Fats g/d/p		
	I полугодие / I half year		I полугодие / I half year		I полугодие / I half year		I полугодие / I half year		
	2009	2010	2009	2010	2009	2010	2009	2010	
Дети 1-17	1 964 977	1 983 235							Children 1-17
Баткенская область	175 405	173 500	2 034	1 961	51,5	49,3	56,1	58,1	Batken
Джалал-Абадская область	388 029	386 833	2 193	2 058	56,9	54,9	52,6	49,8	Djalal-Abad
Иссык-Кульская область	145 947	155 384	1 881	1 916	49,1	48,4	44,5	50,5	Issyk-Kul
Нарынская область	110 895	102 845	2 010	1 943	55,1	51,7	47,6	47,5	Naryn
Ошская область	573 257	565 460	2 035	1 919	51,2	49,3	51,4	50,7	Osh
Таласская область	92 253	95 399	2 069	2 038	52,9	52,0	54,3	52,7	Talas
Чуйская область	235 739	252 987	1 963	2 063	51,1	53,2	54,2	58,6	Chui
г.Бишкек	243 452	250 827	2 091	2 093	55,9	57,2	57,7	54,9	Bishkek
Суточное потребление			2 053	1 997	53,1	52,1	52,6	52,6	Daily intake
Суточные потребности			1 920	1 920	69,0	69,0	66,0	66,0	Daily needs
Баланс: (+) или (-)			133	77	-16	-17	-13	-13	Balance: (+) or (-)

Таблица 4: (продолжение)
Table 4: (continued)

	Население, человек		Ккал в день на душу населения		Белки в день на душу населения, грамм		Жиры в день на душу населения, грамм		
	Number, people		C/Calories C/d/p		Proteins g/d/p		Fats g/d/p		
	I полугодие / I half year		I полугодие / I half year		I полугодие / I half year		I полугодие / I half year		
	2009	2010	2009	2010	2009	2010	2009	2010	
Дети 1-3 лет	291 457	338 048							Children 1-3
Баткенская область	24 967	30 789	1 300	1 289	33,6	34,4	36,2	37,6	Batken
Джалал-Абадская область	46 991	66 016	1 409	1 261	35,9	33,3	34,5	30,3	Djalal-Abad
Иссык-Кульская область	28 508	37 297	1 271	1 278	33,5	32,5	29,3	32,8	Issyk-Kul
Нарынская область	21 720	16 507	1 618	1 359	44,2	39,2	36,9	33,9	Naryn
Ошская область	68 156	85 285	1 364	1 236	33,9	32,3	35,1	31,7	Osh
Таласская область	16 482	16 265	1 416	1 458	36,5	37,1	38,9	38,4	Talas
Чуйская область	47 304	50 142	1 406	1 517	36,3	40,4	39,9	42,1	Chui
г.Бишкек	37 329	35 747	1 520	1 413	41,8	39,1	41,3	37,9	Bishkek
Суточное потребление			1 405	1 327	36,5	35,2	36,5	34,7	Daily intake
Суточные потребности			1 661	1 661	62,0	62,0	59,0	59,0	Daily needs
Баланс: (+) или (-)			-256	-334	-26	-27	-23	-24	Balance: (+) or (-)

Таблица 4: (продолжение)
Table 4: (continued)

	Население, человек		Ккал в день на душу населения		Белки в день на душу населения, грамм		Жиры в день на душу населения, грамм		
	Number, people		C/Calories C/d/p		Proteins g/d/p		Fats g/d/p		
	I полугодие / I half year		I полугодие / I half year		I полугодие / I half year		I полугодие / I half year		
	2009	2010	2009	2010	2009	2010	2009	2010	
Дети 4-6 лет	324 226	301 520							Children 4-6
Баткенская область	26 710	25 912	1 678	1 651	42,6	43,8	47,7	47,0	Batken
Джалал-Абадская область	58 608	49 130	1 754	1 783	46,3	47,3	44,3	44,7	Djalal-Abad
Иссык-Кульская область	21 132	22 718	1 719	1 718	44,8	42,9	37,8	46,4	Issyk-Kul
Нарынская область	20 493	18 411	1 635	1 681	44,1	44,4	38,2	41,1	Naryn
Ошская область	91 066	81 521	1 677	1 611	42,6	40,8	42,0	41,0	Osh
Таласская область	16 281	18 244	1 782	1 718	45,2	43,5	46,2	43,0	Talas
Чуйская область	39 495	37 935	1 694	1 761	43,8	46,4	47,1	48,7	Chui
г.Бишкек	50 441	47 649	1 742	1 800	46,4	49,6	47,8	48,1	Bishkek
Суточное потребление			1 709	1 710	44,4	44,7	44,1	44,7	Daily intake
Суточные потребности			1 661	1 661	62,0	62,0	59,0	59,0	Daily needs
Баланс: (+) или (-)			48	49	-18	-17	-15	-14	Balance: (+) or (-)

Таблица 4: (продолжение)
Table 4: (continued)

	Население, человек		Ккал в день на душу населения		Белки в день на душу населения, грамм		Жиры в день на душу населения, грамм		
	Number, people		C/Calories C/d/p		Proteins g/d/p		Fats g/d/p		
	I полугодие / I half year		I полугодие / I half year		I полугодие / I half year		I полугодие / I half year		
	2009	2010	2009	2010	2009	2010	2009	2010	
Дети 7-13 лет	799 706	811 571							Children 7-13
Баткенская область	76 147	69 701	2 152	2 084	53,9	52,0	58,3	61,1	Batken
Джалал-Абадская область	166 956	172 103	2 269	2 245	58,3	59,9	54,1	54,0	Djalal-Abad
Иссык-Кульская область	59 976	53 374	2 016	2 089	52,4	53,2	47,9	53,4	Issyk-Kul
Нарынская область	40 439	40 833	2 146	2 064	58,8	54,8	51,1	50,4	Naryn
Ошская область	244 056	247 176	2 122	2 044	53,6	52,6	52,9	54,4	Osh
Таласская область	34 967	35 594	2 184	2 131	55,9	54,5	57,9	55,0	Talas
Чуйская область	77 897	93 857	2 094	2 132	54,2	55,2	58,2	61,5	Chui
г.Бишкек	99 268	98 932	2 246	2 158	60,5	59,1	62,5	56,8	Bishkek
Суточное потребление			2 164	2 122	55,8	55,4	55,1	55,8	Daily intake
Суточные потребности			2 031	2 031	73,0	73,0	70,0	70,0	Daily needs
Баланс: (+) или (-)			133	91	-17	-18	-15	-14	Balance: (+) or (-)

Таблица 4: (продолжение)
Table 4: (continued)

	Население, человек		Ккал в день на душу населения		Белки в день на душу населения, грамм		Жиры в день на душу населения, грамм		
	Number, people		C/Calories C/d/p		Proteins g/d/p		Fats g/d/p		
	I полугодие / I half year		I полугодие / I half year		I полугодие / I half year		I полугодие / I half year		
	2009	2010	2009	2010	2009	2010	2009	2010	
Дети 14-17 лет	549 588	532 096							Children 14-17
Баткенская область	47 581	47 099	2 431	2 388	62,2	58,0	67,7	73,1	Batken
Джалал-Абадская область	115 474	99 583	2 627	2 399	68,7	64,3	62,2	58,1	Djalal-Abad
Иссык-Кульская область	36 330	41 995	2 232	2 370	58,6	59,4	54,8	64,7	Issyk-Kul
Нарынская область	28 243	27 092	2 391	2 294	66,1	59,7	57,8	55,8	Naryn
Ошская область	169 979	151 478	2 369	2 267	59,3	58,0	60,8	60,5	Osh
Таласская область	24 524	25 296	2 534	2 509	64,8	64,3	64,9	65,7	Talas
Чуйская область	71 043	71 053	2 341	2 520	61,7	63,3	63,4	71,6	Chui
г.Бишкек	56 414	68 500	2 508	2 559	65,5	69,1	68,7	65,7	Bishkek
Суточное потребление			2 439	2 395	63,0	61,8	62,5	63,6	Daily intake
Суточные потребности			2 244	2 244	78,0	78,0	74,0	74,0	Daily needs
Баланс: (+) или (-)			195	151	-15	-16	-12	-10	Balance: (+) or (-)

**Таблица 5: Баланс питания в виде энергетической ценности по результатам обследований
ежедневного потребления и оценки ежедневных потребностей**
(все население по квинтильным группам и регионам)

**Table 5: Food Balance expressed in nutritional values according to the results of daily intake surveys
and assessment of daily needs**
(total population by quintile groups and by region)

	Население, человек		Ккал в день на душу населения		Белки в день на душу населения, грамм		Жиры в день на душу населения, грамм		
	Number, people		C/Calories C/d/p		Proteins g/d/p		Fats g/d/p		
	I полугодие / I half year		I полугодие / I half year		I полугодие / I half year		I полугодие / I half year		
	2009	2010	2009	2010	2009	2010	2009	2010	
Первая квинтиль	1 056 830	1 084 772							First quintile
Баткенская область	120 354	76 522	1 964	1 839	48,6	46,0	53,5	49,8	Batken
Джалал-Абадская область	349 431	368 095	2 154	2 054	56,8	56,3	53,0	51,9	Djalal-Abad
Иссык-Кульская область	137 826	91 258	1 821	1 776	46,7	46,6	39,2	45,3	Issyk-Kul
Нарынская область	109 296	118 500	2 073	1 979	58,5	52,9	47,7	47,7	Naryn
Ошская область	123 507	273 824	1 879	1 608	46,1	42,3	45,5	39,2	Osh
Таласская область	87 597	70 459	1 902	1 846	47,0	45,7	48,8	47,0	Talas
Чуйская область	116 203	78 216	1 899	1 744	47,3	45,0	46,6	45,0	Chui
г.Бишкек	12 615	7 899	1 589	1 837	42,8	52,6	34,4	30,6	Bishkek
Суточное потребление			1 993	1 845	51,5	48,9	48,6	46,3	Daily intake
Суточные потребности			2 101	2 101	73,0	73,0	71,0	71,0	Daily needs
Баланс: (+) или (-)			-108	-256	-22	-24	-22	-25	Balance: (+) or (-)

Таблица 5: (продолжение)

Table 5: (continued)

	Население, человек		Ккал в день на душу населения		Белки в день на душу населения, грамм		Жиры в день на душу населения, грамм		
	Number, people		C/Calories C/d/p		Proteins g/d/p		Fats g/d/p		
	I полугодие / I half year		I полугодие / I half year		I полугодие / I half year		I полугодие / I half year		
	2009	2010	2009	2010	2009	2010	2009	2010	
Вторая квинтиль	1 053 750	1 083 241							Second quintile
Баткенская область	97 723	117 055	2 115	2 085	54,3	51,0	56,9	61,1	Batken
Джалал-Абадская область	237 504	326 462	2 214	2 305	56,1	62,1	53,9	55,7	Djalal-Abad
Иссык-Кульская область	136 311	131 053	2 051	1 987	52,6	49,8	49,3	48,7	Issyk-Kul
Нарынская область	54 096	53 909	2 100	2 034	54,7	51,3	48,3	46,8	Naryn
Ошская область	315 582	272 833	1 957	1 870	48,6	48,7	48,4	44,3	Osh
Таласская область	61 859	66 947	2 346	2 274	60,7	58,1	63,2	56,9	Talas
Чуйская область	111 264	97 886	2 180	2 126	58,5	53,6	56,8	56,9	Chui
г.Бишкек	39 410	17 096	1 723	1 861	47,6	51,1	41,9	43,2	Bishkek
Суточное потребление			2 087	2 097	53,4	54,4	52,0	52,1	Daily intake
Суточные потребности			2 101	2 101	73,0	73,0	71,0	71,0	Daily needs
Баланс: (+) или (-)			-14	-4	-20	-19	-19	-19	Balance: (+) or (-)

Таблица 5: (продолжение)
Table 5: (continued)

	Население, человек		Ккал в день на душу населения		Белки в день на душу населения, грамм		Жиры в день на душу населения, грамм		
	Number, people		C/Calories C/d/p		Proteins g/d/p		Fats g/d/p		
	I полугодие / I half year		I полугодие / I half year		I полугодие / I half year		I полугодие / I half year		
	2009	2010	2009	2010	2009	2010	2009	2010	
Третья квинтиль	1 055 021	1 083 350							Third quintile
Баткенская область	107 283	118 269	2 202	2 266	54,8	59,1	60,1	67,8	Batken
Джалал-Абадская область	194 997	150 674	2 433	2 407	62,3	62,1	58,1	56,5	Djalal-Abad
Иссык-Кульская область	55 044	99 531	2 302	2 371	61,9	60,2	59,0	63,0	Issyk-Kul
Нарынская область	41 895	20 752	2 345	2 129	60,7	60,2	59,3	53,1	Naryn
Ошская область	333 843	363 896	2 206	2 070	54,2	53,3	55,8	56,7	Osh
Таласская область	36 890	53 071	2 647	2 598	71,0	67,1	66,2	67,2	Talas
Чуйская область	149 548	150 077	2 341	2 322	60,5	61,3	62,9	63,2	Chui
г.Бишкек	135 521	127 079	2 018	2 023	53,8	55,5	52,0	50,5	Bishkek
Суточное потребление			2 268	2 227	57,8	58,1	57,9	59,0	Daily intake
Суточные потребности			2 101	2 101	73,0	73,0	71,0	71,0	Daily needs
Баланс: (+) или (-)			167	126	-15	-15	-13	-12	Balance: (+)or (-)

Таблица 5: (продолжение)

Table 5: (continued)

	Население, человек		Ккал в день на душу населения		Белки в день на душу населения, грамм		Жиры в день на душу населения, грамм		
	Number, people		C/Calories C/d/p		Proteins g/d/p		Fats g/d/p		
	I полугодие / I half year		I полугодие / I half year		I полугодие / I half year		I полугодие / I half year		
	2009	2010	2009	2010	2009	2010	2009	2010	
Четвертая квинтиль	1 061 968	1 083 286							Fourth quintile
Баткенская область	44 200	57 824	2 774	2 317	75,1	55,4	86,3	75,3	Batken
Джалал-Абадская область	118 594	123 087	2 676	2 620	69,7	70,0	64,7	65,2	Djalal-Abad
Иссык-Кульская область	60 319	67 397	2 622	2 730	68,5	68,6	66,3	79,2	Issyk-Kul
Нарынская область	35 367	36 672	2 411	2 290	67,6	64,8	63,9	59,9	Naryn
Ошская область	296 939	260 683	2 337	2 378	58,5	61,3	59,8	66,0	Osh
Таласская область	22 849	24 372	3 149	2 960	82,0	76,3	85,5	81,7	Talas
Чуйская область	213 797	269 338	2 416	2 565	64,2	67,2	70,7	73,2	Chui
г.Бишкек	269 904	243 911	2 179	2 239	59,1	61,0	60,3	59,6	Bishkek
Суточное потребление			2 405	2 449	63,1	64,3	64,8	67,6	Daily intake
Суточные потребности			2 101	2 101	73,0	73,0	71,0	71,0	Daily needs
Баланс: (+) или (-)			304	348	-10	-9	-6	-3	Balance: (+) or (-)

Таблица 5: (продолжение)
Table 5: (continued)

	Население, человек		Ккал в день на душу населения		Белки в день на душу населения, грамм		Жиры в день на душу населения, грамм		
	Number, people		C/Calories C/d/p		Proteins g/d/p		Fats g/d/p		
	I полугодие / I half year		I полугодие / I half year		I полугодие / I half year		I полугодие / I half year		
	2009	2010	2009	2010	2009	2010	2009	2010	
Пятая квинтиль	1 048 524	1 083 650							Fifth quintile
Баткенская область	61 506	64 132	2 514	2 684	64,2	75,1	75,6	83,3	Batken
Джалал-Абадская область	93 234	54 814	3 458	2 579	90,7	67,5	86,7	71,1	Djalal-Abad
Иссык-Кульская область	45 382	52 083	3 394	3 478	95,2	90,5	94,0	100,4	Issyk-Kul
Нарынская область	30 825	29 544	3 012	2 252	83,4	62,0	71,4	59,6	Naryn
Ошская область	269 334	205 721	2 830	2 904	73,1	74,5	79,4	82,3	Osh
Таласская область	10 216	14 146	4 244	4 248	112,8	114,9	127,5	124,6	Talas
Чуйская область	171 680	212 727	3 179	3 271	88,5	90,4	106,0	108,7	Chui
г.Бишкек	366 346	450 482	2 899	2 792	81,1	78,9	87,7	81,0	Bishkek
Суточное потребление			2 992	2 922	81,1	80,0	87,9	87,0	Daily intake
Суточные потребности			2 101	2 101	73,0	73,0	71,0	71,0	Daily needs
Баланс: (+) или (-)			891	821	8	7	17	16	Balance: (+) or (-)

Таблица 6: Продовольственный баланс домохозяйств в стоимостном выражении по результатам обследований уровня жизни

(все население по доходным квинтильным группам и регионам, сомов)

Table 6: Household Food Balance expressed in terms of value according to the results of living standards surveys

(total population by income quintile and by region, som)

	Население, человек		Среднедушевые доходы, сом/чел/месяц		Среднедушевые расходы на питание, сом/чел/месяц		Баланс, %		
	Number, people		Average per capita available income, s/ps/month		Average per capita food expenditure, s/ps/month		Balance, %		
	I полугодие / I half year		I полугодие / I half year		I полугодие / I half year		I полугодие / I half year		
	2009	2010	2009	2010	2009	2010	2009	2010	
Все население	5 276 092	5 418 299							Total population
Баткенская область	431 067	433 802	2 037	2 185	749	786	36,8	36,0	Batken
Джалал-Абадская область	993 761	1 023 132	1 846	2 033	919	763	49,8	37,5	Djalal-Abad
Иссык-Кульская область	434 882	441 323	1 786	2 140	902	858	50,5	40,1	Issyk-Kul
Нарынская область	271 480	259 378	1 578	1 816	667	538	42,3	29,6	Naryn
Ошская область	1 339 205	1 376 957	2 186	2 110	1 158	1 054	53,0	50,0	Osh
Таласская область	219 410	228 995	1 490	1 748	770	726	51,7	41,5	Talas
Чуйская область	762 492	808 245	2 383	2 690	1 123	1 268	47,1	47,1	Chui
г.Бишкек	823 795	846 467	2 649	2 975	1 570	1 595	59,3	53,6	Bishkek
Средневзвешенный баланс			2 117	2 296	1 076	1 039	50,8	45,3	Average weighted balance

Таблица 6: (продолжение)
Table 6: (continued)

	Население, человек		Среднедушевые доходы, сом/чел/месяц		Среднедушевые расходы на питание, сом/чел/месяц		Баланс, %		
	Number, people		Average per capita available income, s/ps/month		Average per capita food expenditure, s/ps/month		Balance, %		
	I полугодие / I half year		I полугодие / I half year		I полугодие / I half year		I полугодие / I half year		
	2009	2010	2009	2010	2009	2010	2009	2010	
Первая квинтиль	1 053 462	1 084 033							First quintile
Баткенская область	85 372	66 646	841	824	553	627	65,7	76,0	Batken
Джалал-Абадская область	185 679	226 148	848	792	662	463	78,1	58,4	Djalal-Abad
Иссык-Кульская область	147 197	121 732	644	678	672	541	104,5	79,7	Issyk-Kul
Нарынская область	116 851	91 550	676	714	474	338	70,0	47,3	Naryn
Ошская область	269 920	385 284	828	825	753	670	90,9	81,2	Osh
Таласская область	90 013	73 451	658	679	548	557	83,4	82,0	Talas
Чуйская область	111 123	94 532	734	743	665	668	90,6	89,9	Chui
г.Бишкек	47 306	24 690	834	739	995	1 082	119,3	146,5	Bishkek
Средневзвешенный баланс			766	773	663	583	86,5	75,4	Average weighted balance

Таблица 6: (продолжение)
Table 6: (continued)

	Население, человек		Среднедушевые доходы, сом/чел/месяц		Среднедушевые расходы на питание, сом/чел/месяц		Баланс, %		
	Number, people		Average per capita available income, s/ps/month		Average per capita food expenditure, s/ps/month		Balance, %		
	I полугодие / I half year		I полугодие / I half year		I полугодие / I half year		I полугодие / I half year		
	2009	2010	2009	2010	2009	2010	2009	2010	
Вторая квинтиль	1 057 207	1 083 192							Second quintile
Баткенская область	92 124	124 292	1 280	1 347	668	673	52,2	50,0	Batken
Джалал-Абадская область	332 654	254 132	1 244	1 259	765	603	61,5	47,9	Djalal-Abad
Иссык-Кульская область	91 127	92 211	1 282	1 299	697	732	54,4	56,4	Issyk-Kul
Нарынская область	40 637	60 684	1 238	1 270	599	444	48,4	35,0	Naryn
Ошская область	256 233	262 619	1 290	1 327	975	968	75,6	72,9	Osh
Таласская область	42 430	51 742	1 265	1 289	855	605	67,6	46,9	Talas
Чуйская область	112 410	125 967	1 277	1 339	911	873	71,3	65,2	Chui
г.Бишкек	89 593	111 544	1 271	1 350	1 147	1 159	90,3	85,9	Bishkek
Средневзвешенный баланс			1 268	1 310	847	790	66,8	60,4	Average weighted balance

Таблица 6: (продолжение)
Table 6: (continued)

	Население, человек		Среднедушевые доходы, сом/чел/месяц		Среднедушевые расходы на питание, сом/чел/месяц		Баланс, %		
	Number, people		Average per capita available income, s/ps/month		Average per capita food expenditure, s/ps/month		Balance, %		
	I полугодие / I half year		I полугодие / I half year		I полугодие / I half year		I полугодие / I half year		
	2009	2010	2009	2010	2009	2010	2009	2010	
Третья квинтиль	1 057 143	1 083 636							Third quintile
Баткенская область	85 237	83 291	1 708	1 835	643	787	37,6	42,9	Batken
Джалал-Абадская область	169 040	211 171	1 686	1 884	811	785	48,1	41,7	Djalal-Abad
Иссык-Кульская область	76 001	80 016	1 741	1 813	879	889	50,5	49,0	Issyk-Kul
Нарынская область	49 433	37 944	1 687	1 882	790	610	46,8	32,4	Naryn
Ошская область	298 008	262 413	1 775	1 899	1 054	1 041	59,4	54,8	Osh
Таласская область	44 269	47 160	1 762	1 832	818	785	46,4	42,9	Talas
Чуйская область	157 420	191 700	1 684	1 893	1 001	1 155	59,4	61,0	Chui
г.Бишкек	177 735	169 942	1 734	1 894	1 432	1 428	82,5	75,4	Bishkek
Средневзвешенный баланс			1 728	1 879	1 003	1 015	58,0	54,0	Average weighted balance

Таблица 6: (продолжение)
Table 6: (continued)

	Население, человек		Среднедушевые доходы, сом/чел/месяц		Среднедушевые расходы на питание, сом/чел/месяц		Баланс, %		
	Number, people		Average per capita available income, s/ps/month		Average per capita food expenditure, s/ps/month		Balance, %		
	I полугодие / I half year		I полугодие / I half year		I полугодие / I half year		I полугодие / I half year		
	2009	2010	2009	2010	2009	2010	2009	2010	
Четвертая квинтиль	1 051 334	1 084 263							Fourth quintile
Баткенская область	96 421	94 344	2 366	2 598	821	858	34,7	33,0	Batken
Джалал-Абадская область	173 777	189 242	2 392	2 595	1 181	970	49,4	37,4	Djalal-Abad
Иссык-Кульская область	54 815	72 345	2 454	2 591	1 054	1 022	42,9	39,5	Issyk-Kul
Нарынская область	30 191	32 238	2 332	2 630	758	709	32,5	26,9	Naryn
Ошская область	217 895	240 032	2 361	2 635	1 387	1 256	58,8	47,7	Osh
Таласская область	30 308	29 431	2 383	2 564	974	1 061	40,9	41,4	Talas
Чуйская область	187 282	181 738	2 407	2 594	1 219	1 447	50,6	55,8	Chui
г.Бишкек	260 646	244 894	2 427	2 618	1 480	1 378	61,0	52,6	Bishkek
Средневзвешенный баланс			2 396	2 609	1 247	1 194	52,0	45,8	Average weighted balance

Таблица 6: (продолжение)
Table 6: (continued)

	Население, человек		Среднедушевые доходы, сом/чел/месяц		Среднедушевые расходы на питание, сом/чел/месяц		Баланс, %		
	Number, people		Average per capita available income, s/ps/month		Average per capita food expenditure, s/ps/month		Balance, %		
	I полугодие / I half year		I полугодие / I half year		I полугодие / I half year		I полугодие / I half year		
	2009	2010	2009	2010	2009	2010	2009	2010	
Пятая квинтиль	1 056 946	1 083 175							Fifth quintil
Баткенская область	71 913	65 229	4 377	5 024	1 116	1 059	25,5	21,1	Batken
Джалал-Абадская область	132 611	142 439	4 241	4 861	1 462	1 214	34,5	25,0	Djalal-Abad
Иссык-Кульская область	65 742	75 020	4 542	5 459	1 599	1 336	35,2	24,5	Issyk-Kul
Нарынская область	34 367	36 961	4 231	4 666	1 151	966	27,2	20,7	Naryn
Ошская область	297 148	226 610	4 477	4 889	1 619	1 610	36,2	32,9	Osh
Таласская область	12 390	27 211	5 145	4 477	1 422	945	27,6	21,1	Talas
Чуйская область	194 258	214 308	4 507	5 139	1 515	1 712	33,6	33,3	Chui
г.Бишкек	248 516	295 397	4 378	4 694	2 027	2 078	46,3	44,3	Bishkek
Средневзвешенный баланс			4 427	4 911	1 623	1 615	36,7	32,9	Average weighted balance

Таблица 7: Продовольственный баланс домохозяйств в стоимостном выражении по результатам обследований уровня жизни
(все население по расходным квинтильным группам и регионам, сом)

Table 7: Household Food Balance expressed in terms of value according to the results of living standards surveys
(total population by expenditure quintile and by region, som)

	Население, человек		Общие среднедушевые расходы, сом/чел/месяц		Среднедушевые расходы на питание, сом/чел/месяц		Баланс, %		
	Number, people		Total per capita expenditures s/ps/month		Average per capita food expenditure, s/ps/month		Balance, %		
	I полугодие / I half year		I полугодие / I half year		I полугодие / I half year		I полугодие / I half year		
	2009	2010	2009	2010	2009	2010	2009	2010	
Все население	5 276 092	5 418 299							Total population
Баткенская область	431 067	433 802	1 818	2 062	749	786	41,2	38,1	Batken
Джалал-Абадская область	993 761	1 023 132	1 602	1 463	919	763	57,4	52,1	Djalal-Abad
Иссык-Кульская область	434 882	441 323	1 652	1 888	902	858	54,6	45,4	Issyk-Kul
Нарынская область	271 480	259 378	1 603	1 914	667	538	41,6	28,1	Naryn
Ошская область	1 339 205	1 376 957	2 322	2 060	1 158	1 054	49,9	51,2	Osh
Таласская область	219 410	228 995	1 418	1 550	770	726	54,3	46,8	Talas
Чуйская область	762 492	808 245	2 364	2 723	1 123	1 268	47,5	46,5	Chui
г.Бишкек	823 795	846 467	3 320	3 577	1 570	1 595	47,3	44,6	Bishkek
Средневзвешенный баланс			2 177	2 241	1 076	1 039	49,4	46,4	Average weighted balance

Таблица 7: (продолжение)

Table 7: (continued)

	Население, человек		Общие среднедушевые расходы, сом/чел/месяц		Среднедушевые расходы на питание, сом/чел/месяц		Баланс, %		
	Number, people		Total per capita expenditures s/ps/month		Average per capita food expenditure, s/ps/month		Balance, %		
	I полугодие / I half year		I полугодие / I half year		I полугодие / I half year		I полугодие / I half year		
	2009	2010	2009	2010	2009	2010	2009	2010	
Первая квинтиль	1 056 830	1 084 772							First quintile
Баткенская область	120 354	76 522	915	869	414	439	45,3	50,6	Batken
Джалал-Абадская область	349 431	368 095	833	738	497	383	59,7	51,9	Djalal-Abad
Иссык-Кульская область	137 826	91 258	773	797	472	407	61,0	51,0	Issyk-Kul
Нарынская область	109 296	118 500	695	701	321	275	46,2	39,1	Naryn
Ошская область	123 507	273 824	933	814	612	550	65,6	67,5	Osh
Таласская область	87 597	70 459	795	831	428	395	53,9	47,6	Talas
Чуйская область	116 203	78 216	862	810	501	441	58,1	54,4	Chui
г.Бишкек	12 615	7 899	956	732	486	349	50,8	47,7	Bishkek
Средневзвешенный баланс			833	779	474	424	56,9	54,4	Average weighted balance

Таблица 7: (продолжение)

Table 7: (continued)

	Население, человек		Общие среднедушевые расходы, сом/чел/месяц		Среднедушевые расходы на питание, сом/чел/месяц		Баланс, %		
	Number, people		Total per capita expenditures s/ps/month		Average per capita food expenditure, s/ps/month		Balance, %		
	I полугодие / I half year		I полугодие / I half year		I полугодие / I half year		I полугодие / I half year		
	2009	2010	2009	2010	2009	2010	2009	2010	
Вторая квинтиль	1 053 750	1 083 241							Second quintile
Баткенская область	97 723	117 055	1 306	1 311	675	641	51,7	48,9	Batken
Джалал-Абадская область	237 504	326 462	1 290	1 329	766	719	59,4	54,1	Djalal-Abad
Иссык-Кульская область	136 311	131 053	1 307	1 267	739	626	56,6	49,4	Issyk-Kul
Нарынская область	54 096	53 909	1 298	1 337	562	578	43,3	43,3	Naryn
Ошская область	315 582	272 833	1 314	1 289	805	745	61,2	57,8	Osh
Таласская область	61 859	66 947	1 295	1 295	731	606	56,5	46,8	Talas
Чуйская область	111 264	97 886	1 336	1 329	780	744	58,4	55,9	Chui
г.Бишкек	39 410	17 096	1 316	1 320	745	662	56,6	50,1	Bishkek
Средневзвешенный баланс			1 307	1 308	754	693	57,7	53,0	Average weighted balance

Таблица 7: (продолжение)

Table 7: (continued)

	Население, человек		Общие среднедушевые расходы, сом/чел/месяц		Среднедушевые расходы на питание, сом/чел/месяц		Баланс, %		
	Number, people		Total per capita expenditures s/ps/month		Average per capita food expenditure, s/ps/month		Balance, %		
	I полугодие / I half year		I полугодие / I half year		I полугодие / I half year		I полугодие / I half year		
	2009	2010	2009	2010	2009	2010	2009	2010	
Третья квинтиль	1 055 021	1 083 350							Third quintile
Баткенская область	107 283	118 269	1 764	1 799	781	814	44,3	45,2	Batken
Джалал-Абадская область	194 997	150 674	1 752	1 778	986	961	56,3	54,1	Djalal-Abad
Иссык-Кульская область	55 044	99 531	1 795	1 807	1 061	862	59,1	47,7	Issyk-Kul
Нарынская область	41 895	20 752	1 759	1 789	728	563	41,4	31,5	Naryn
Ошская область	333 843	363 896	1 789	1 810	1 021	1 001	57,1	55,3	Osh
Таласская область	36 890	53 071	1 807	1 751	1 017	892	56,3	50,9	Talas
Чуйская область	149 548	150 077	1 798	1 810	891	980	49,5	54,1	Chui
г.Бишкек	135 521	127 079	1 792	1 868	1 002	918	55,9	49,1	Bishkek
Средневзвешенный баланс			1 781	1 808	959	936	53,9	51,8	Average weighted balance

Таблица 7: (продолжение)
Table 7: (continued)

	Население, человек		Общие среднедушевые расходы, сом/чел/месяц		Среднедушевые расходы на питание, сом/чел/месяц		Баланс, %		
	Number, people		Total per capita expenditures s/ps/month		Average per capita food expenditure, s/ps/month		Balance, %		
	I полугодие / I half year		I полугодие / I half year		I полугодие / I half year		I полугодие / I half year		
	2009	2010	2009	2010	2009	2010	2009	2010	
Четвертая квинтиль	1 061 968	1 083 286							Fourth quintile
Баткенская область	44 200	57 824	2 493	2 547	976	1 046	39,2	41,1	Batken
Джалал-Абадская область	118 594	123 087	2 401	2 474	1 389	1 280	57,9	51,7	Djalal-Abad
Иссык-Кульская область	60 319	67 397	2 437	2 469	1 220	1 161	50,0	47,0	Issyk-Kul
Нарынская область	35 367	36 672	2 431	2 488	1 069	808	44,0	32,5	Naryn
Ошская область	296 939	260 683	2 391	2 506	1 182	1 238	49,4	49,4	Osh
Таласская область	22 849	24 372	2 411	2 487	1 325	1 054	55,0	42,4	Talas
Чуйская область	213 797	269 338	2 435	2 574	1 253	1 338	51,4	52,0	Chui
г.Бишкек	269 904	243 911	2 459	2 524	1 256	1 200	51,1	47,5	Bishkek
Средневзвешенный баланс			2 427	2 522	1 231	1 225	50,7	48,6	Average weighted balance

Таблица 7: (продолжение)
Table 7: (continued)

	Население, человек		Общие среднедушевые расходы, сом/чел/месяц		Среднедушевые расходы на питание, сом/чел/месяц		Баланс, %		
	Number, people		Total per capita expenditures s/ps/month		Average per capita food expenditure, s/ps/month		Balance, %		
	I полугодие / I half year		I полугодие / I half year		I полугодие / I half year		I полугодие / I half year		
	2009	2010	2009	2010	2009	2010	2009	2010	
Пятая квинтиль	1 048 524	1 083 650							Fifth quintile
Баткенская область	61 506	64 132	4 004	4 906	1 301	1 178	32,5	24,0	Batken
Джалал-Абадская область	93 234	54 814	3 955	3 983	2 159	1 864	54,6	46,8	Djalal-Abad
Иссык-Кульская область	45 382	52 083	4 139	4 770	2 081	1 833	50,3	38,4	Issyk-Kul
Нарынская область	30 825	29 544	4 194	7 205	1 535	1 167	36,6	16,2	Naryn
Ошская область	269 334	205 721	4 723	4 614	1 966	1 998	41,6	43,3	Osh
Таласская область	10 216	14 146	3 884	3 970	1 803	1 747	46,4	44,0	Talas
Чуйская область	171 680	212 727	4 452	4 901	1 807	1 926	40,6	39,3	Chui
г.Бишкек	366 346	450 482	4 816	4 765	2 139	2 057	44,4	43,2	Bishkek
Средневзвешенный баланс			4 552	4 788	1 969	1 919	43,3	40,1	Average weighted balance

**Таблица 8. Индикаторы продовольственной безопасности
Кыргызской Республики**
Table 8. Indicators of Food Security of the Kyrgyz Republic

Таблица 8.1. Уровень суточной энергетической ценности рациона человека
(ккал)
Table 8.1. Level of daily energy value
(kcal)

Период/Period	Фактическая ценность рациона/ Actual value ¹	Минимальная норма/Minimal norm	Фактическое значение индикатора (гр. 2/гр.3)/Actual meaning of indicator (r.2/r.3)
1	2	3	4
янв.-март/ Jan- March 2007	2196	2431	0,90
янв.-июнь/ Jan- June 2007	2184	2431	0,90
янв.-сент./ Jan- Sept 2007	2253	2431	0,93
2007 янв.-март/ Jan- March 2008	2218	2431	0,91
янв.-июнь/ Jan- June 2008	2287	2431	0,94
янв.-сент./ Jan- Sept 2008	2277	2431	0,94
2008 янв.-март/ Jan- March 2009	2299	2431	0,95
янв.-июнь/ Jan- June 2009	2295	2431	0,94
янв.-сент./ Jan- Sept 2009	2395	2431	0,99
2009 янв.-март 2010/ Jan- March 2010	2348	2431	0,97
янв.-июнь 2010/Jan-June 2010	2356	2101	1,12
	2358	2101	1,12
	2380	2101	1,13
	2323	2101	1,11

¹ По результатам интегрированного выборочного обследования бюджета домашних хозяйств и рабочей силы/ According to the results of Integrated Sample Survey of Budgets of Household and Labour Force

Таблица 8.2. Достаточность потребления отдельного продукта

(в среднем на душу населения, кг в месяц)

Table 8.2. Sufficiency of consumption of selected products

(in average per capita, soms/month)

	Фактическое потребление/Actual consumption								
	Хлеб и хлебо-продукты/ Bread, bread products ²	Мясо и мясопродукты/ Meat, meat products ²	Молоко и молочные продукты /Milk, dairy products ²	Яйца (штук)/ Eggs (pieces)	Овощи и бахчевые/V egetable, melons	Фрукты и ягоды/ Fruits, berries	Картофель/P otatoes	Сахар/ Sugar	Масло растительное/ Vegetable oil
янв.-март/Jan-March 2007	15,2	3,0	10,8	5,0	12,0	2,1	8,2	1,3	0,5
янв.-июнь/Jan-June 2007	15,4	3,0	15,5	5,1	6,2	1,4	8,0	1,5	0,4
янв.-сент./Jan-Sept 2007	16,2	3,2	17,4	5,1	10,9	2,6	8,4	1,6	0,5
янв.-март/Jan-March 2008	15,3	2,9	17,4	5,9	12,2	3,0	8,0	1,8	0,5
янв.-июнь/Jan-June 2008	15,3	3,0	10,9	5,2	12,2	2,1	8,2	1,4	0,5
янв.-сент./Jan-Sept 2008	15,4	3,0	15,7	5,2	6,2	1,2	8,0	1,6	0,5
янв.-сент./Jan-Sept 2008	16,2	3,3	17,4	5,2	11,0	2,0	8,4	1,6	0,6
янв.-сент./Jan-Sept 2008	15,9	3,1	18,1	6,3	12,6	2,5	8,3	1,8	0,6
янв.-март/Jan-March 2009	16,1	3,2	12,2	5,9	12,7	0,9	8,3	1,7	0,9
янв.-июнь/Jan-June 2009	16,0	3,1	16,5	5,5	6,6	0,5	8,4	1,7	0,7
янв.-сент./Jan-Sept 2009	16,6	3,4	18,1	5,3	12,0	2,2	8,5	1,6	0,6
янв.-сент./Jan-Sept 2009	15,9	3,2	17,7	6,6	12,6	2,5	8,2	1,8	0,7
янв.-март 2010/Jan-March 2010 ¹	16,0	3,4	12,2	6,2	12,6	1,4	8,2	1,7	1,0
Янв.-июнь 2010/Jan-June 2010 ¹	15,9	3,3	16,5	5,6	6,3	0,5	8,3	1,7	1,0
Янв.-сент. 2010/Jan-Sept 2010 ¹	16,4	3,3	17,8	5,6	12,1	2,3	8,3	1,6	0,7
Янв.-сент. 2010 ¹	15,7	3,2	17,7	6,6	12,1	2,5	8,1	1,8	1,0

¹ Данные предварительные/Preliminary data

² В пересчете на первичный продукт/Expressed in primary product

Таблица 8.3. Экономическая доступность продуктов питания

(в среднем на душу населения, сомов в месяц)

Table 8.3. Economic access of food

(in average per capita, soms/month)

Период/Period	Размер среднемесячных затрат домохозяйств на питание/Average monthly household costs for food	Размер среднемесячных совокупных затрат домохозяйств/Average monthly compiled costs of household	Фактическое значение индикатора (гр. 2/гр.3)*100/Actual meaning of indicator(row2/row3)*100
1	2	3	4
янв.-март/Jan-March 2007	567	1178	48
янв.-июнь/Jan-June 2007	597	1280	47
янв.-сент./Jan-Sept 2007	675	1466	46
2007	720	1579	46
янв.-март/Jan-March 2008	887	1600	55
янв.-июнь/Jan-June 2008	984	1890	52
янв.-сент./Jan-Sept 2008	1052	2090	50
2008	1093	2257	48
янв.-март/Jan-March 2009	1089	2143	51
янв.-июнь/Jan-June 2009	1076	2177	49
янв.-сент./Jan-Sept 2009	1089	2136	51
2009	1095	2264	48
янв.-март 2010/ Jan-March 2010	1018	2198	46
янв.-июнь 2010/Jan-June 2010	1039	2241	46

Таблица 8.4. Дифференциация расходов на питание по социальным группам*(в среднем на душу населения, сомов в месяц)***Table 8.4. Differentiation of costs for food by social groups***(in average per capita, soms/month)*

Период/Period	Первая квнтильная группа (с наименьшими доходами)/First Quintile (with lowest incomes)	Пятая квинтильная группа (с наибольшими доходами)/Fifth quintile group (with highest incomes)
янв.-март/Jan-March 2007	215	1129
янв.-июнь/Jan-June 2007	243	1143
янв.-сент./Jan-Sept 2007	284	1275
2007	305	1317
янв.-март/Jan-March 2008	309	1665
янв.-июнь/Jan-June 2008	399	1792
янв.-сент./Jan-Sept 2008	472	1836
2008	718	1565
янв.-март/Jan-March 2009	708	1629
янв.-июнь/Jan-June 2009	663	1623
янв.-сент./Jan-Sept 2009	670	1635
2009	648	1669
янв.-март 2010/Jan-March 2010	614	1574
янв.-июнь 2010/Jan-June 2010	583	1615

Таблица 8.5. Емкость внутреннего рынка отдельных продуктов

(тыс.тонн)

Table 8.5. Absorption of domestic market of selected products

(thsd.tons)

	Хлеб и хлебо- продукты/ Bread, bread products ²	Мясо и мясопро- дукты/ Meat, meat products ²	Молоко и молочные продукты /Milk, dairy products ²	Яйца (штук)/Eggs (pieces)	Овощи и бахчевые/V egetable, melons	Фрукты и ягоды/ Fruits, berries	Картофель/P otatoes	Сахар/ Sugar	Масло раститель- ное/ Vegetable oil
янв.-март/Jan- March 2007	237,3	46,3	168,8	78,5	188,4	32,3	128,2	20,0	7,5
янв.-июнь/Jan- June 2007	483,1	92,6	487,1	158,7	194,8	43,4	250,1	48,4	13,1
янв.-сент./Jan- Sept 2007	761,2	150,1	818,9	242,3	512,1	124,3	394,3	75,4	24,9
2007	963,2	182,3	1094,1	371,7	766,8	188,5	502,5	111,1	31,4
янв.-март/ Jan-March 2008	241,6	48,1	171,9	81,7	193,1	32,9	129,5	22,8	7,7
янв.-июнь/Jan- June 2008	487,1	93,6	494,9	163,9	196,1	37,5	252,0	50,8	16,1
янв.-сент./Jan- Sept 2008	770,1	155,0	825,9	248,3	524,0	96,7	396,8	76,4	28,5
2008	968,3	191,8	1103,2	382,4	768,7	152,0	506,7	112,3	35,0
янв.-март/Jan- March 2009	245,9	49,3	186,7	90,2	194,3	14,1	127,2	25,3	14,3
янв.-июнь/Jan- June 2009	491,0	95,1	505,7	168,9	201,4	14,1	258,5	51,3	20,7
янв.-сент./Jan- Sept 2009	765,4	156,1	832,7	244,3	552,2	99,6	391,8	72,7	28,8
2009	976,9	198,9	1089,5	405,1	774,3	154,4	504,6	109,1	40,4
янв.-март 2010/Jan- March 2010 ¹	245,9	52,8	190,0	96,5	195,9	22,0	127,2	26,3	15,0
Янв.-июнь 2010/Jan-June 2010 ¹	494,1	101,2	511,6	173,7	196,2	14,4	258,4	51,5	30,0
Янв.-сент. 2010/Jan-Sept 2010 ¹	766,6	153,1	829,8	262,3	563,9	105,8	387,7	74,7	32,8
2010 ¹	979,8	200,8	1100,9	412,6	753,4	152,7	504,8	110,6	62,3

¹ Данные предварительные/Preliminary data

² В пересчете на первичный продукт/Expressed in primary product

Таблица 8.6. Баланс фактического уровней производства продовольствия в Кыргызской Республике

(тыс.тонн)

Table 8.6 Balance of necessary and actual level of food production in the Kyrgyz Republic

(thsd. tons)

Производство основных видов продовольствия/Production of main types of food									
Пшеница в весе после доработки/ Wheat after processing	Мясо в убойном весе/Meat at slaughtered weight	Молоко сырое/ Raw milk	Яйца (штук)/Eggs (pieces)	Овощи и бахчевые/Vegetable, melons	Фрукты и ягоды/ Fruits, berries	Картофель/ Potatoes	Сахар/ Sugar	Масло растительное/ Vegetable oil	
янв.-март/Jan-March 2007	-	42,2	204,5	70,1	-	-	-	-	4,5
янв.-июнь/Jan-June 2007	24,5	84,9	570,8	190,5	32,7	1,8	21,9	9,5	7,4
янв.-сент./Jan-Sept 2007	678,6	132,3	973,6	293,7	711,6	122,5	974,3	16,0	11,2
2007	708,9	183,1	1240,0	373,7	908,9	180,5	1373,8	36,8	17,6
янв.-март/Jan-March 2008	-	42,8	210,0	72,7	-	-	-	6,6	4,2
янв.-июнь/Jan-June 2008	37,9	85,6	586,2	193,1	39,4	6,8	22,1	10,7	7,6
янв.-сент./Jan-Sept 2008	720,0	133,3	998,7	292,4	742,5	140,8	976,7	10,8	11,0
2008	746,2	184,2	1273,5	369,3	947,0	185,4	1334,9	10,9	18,3
янв.-март/Jan-March 2009	-	43,3	216,7	67,9	-	-	-	0,0	4,9
янв.-июнь/Jan-June 2009	29,0	86,8	607,1	186,1	41,9	4,8	25,4	0,1	7,8
янв.-сент./Jan-Sept 2009	943,3	135,1	1032,6	291,1	791,4	155,8	899,3	0,2	12,1
2009	1056,7	185,5	1314,7	369,3	969,7	200,5	1393,1	5,9	20,6
янв.-март 2010/Jan-March 2010 ¹	-	44,1	224,2	71,5	-	-	-	0,0	5,6
Янв.-июнь 2010/Jan-June 2010 ¹	9,5	88,1	628,4	191,4	28,0	3,7	19,0	0,0	9,5
Янв.-сент. 2010/Jan-Sept 2010 ¹	756,3	138,7	1070,6	294,4	803,4	146,0	781,3	0,1	12,8
2010 ¹	813,3	189,0	1359,9	372,9	969,3	193,1	1339,4	14,0	18,1

¹ Данные предварительные/Preliminary data

Order No. Copies: 35
Information and Publishing Department
of the MCC of the Natstatcom
of the Kyrgyz Republic

February 24, 2011